

MD SD

122003

- ES Manual de usuario
- FR Manuel d'installation
- IT Manuale d'uso
- PT Manual d'instruções
- EN User's manual



Descripción
del producto

Description du
produit

Descrizione del
prodotto

Descrição do
produto

Product
description

ES El MD SD permite la codificación y modulación en DVB-T (COFDM) de señales provenientes de receptores satélite, cámaras de seguridad, reproductores DVD, CCTV,...

FR Le MD SD permet codage et modulation de signal a DVB-T (COFDM) de récepteurs satellite, caméras de sécurité, lecteurs de DVD, CCTV, ...

IT L'MD SD permette codificare e modulare in formato DVB-T (COFDM) i segnali da ricevitori satellitari, videocamere di sicurezza, lettori DVD, telecamere a circuito chiuso, ...

PT O MD SD permite codificação e modulação em DVB-T (COFDM) de sinais de receptores de satélite, câmaras de segurança, aparelhos de DVD, CCTV, ...

EN The MD SD allows the coding and modulation in DVB-T (COFDM) of signals coming from satellite receivers, security cameras, DVD players, CCTV, ...

- Front display and buttons
- 70-80 dB μ V OUT
- Flexible output frequency
- RF Input MIX
- Video adjustment
- LCN Function
- SID Mapping
- VPID and APID Mapping
- Event Information Table (EIT)
- Program Id. editable
- Button and USB Programming
- 5Vdc External PSU
- Easy installation



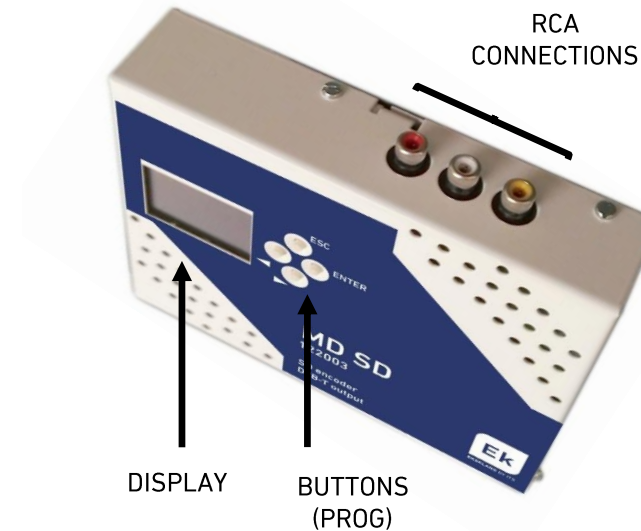
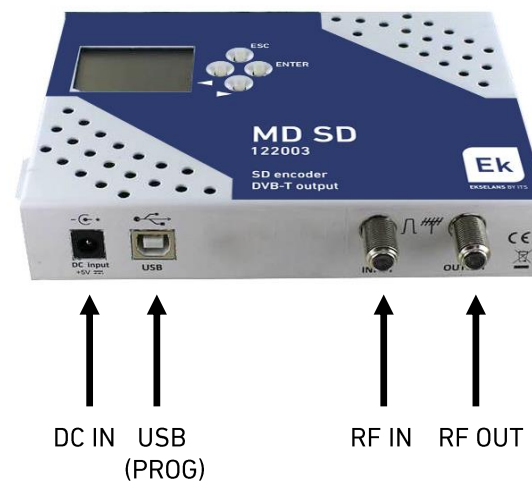
Funciones del programador

Fonctions du programmeur

Funzioni del programmatore

Funções do programador

Programmer function



ES

Aceptar (Enter)



Desplazamiento izquierda a través de las opciones de los submenús



Desplazamiento derecha a través de las opciones de los submenús

FR

Accepter (Enter)

Déplacement gauche à travers les options du sous-menu

Déplacement droite à travers les options du sous-menu

IT

Accettare (Enter)

Spostamento sinistra nelle opzioni dei sottomenu

Spostamento destra nelle opzioni dei sottomenu

PT

Aceitar (Enter)

Mover esquerda nas opções de submenús

Mover direita nas opções de submenús

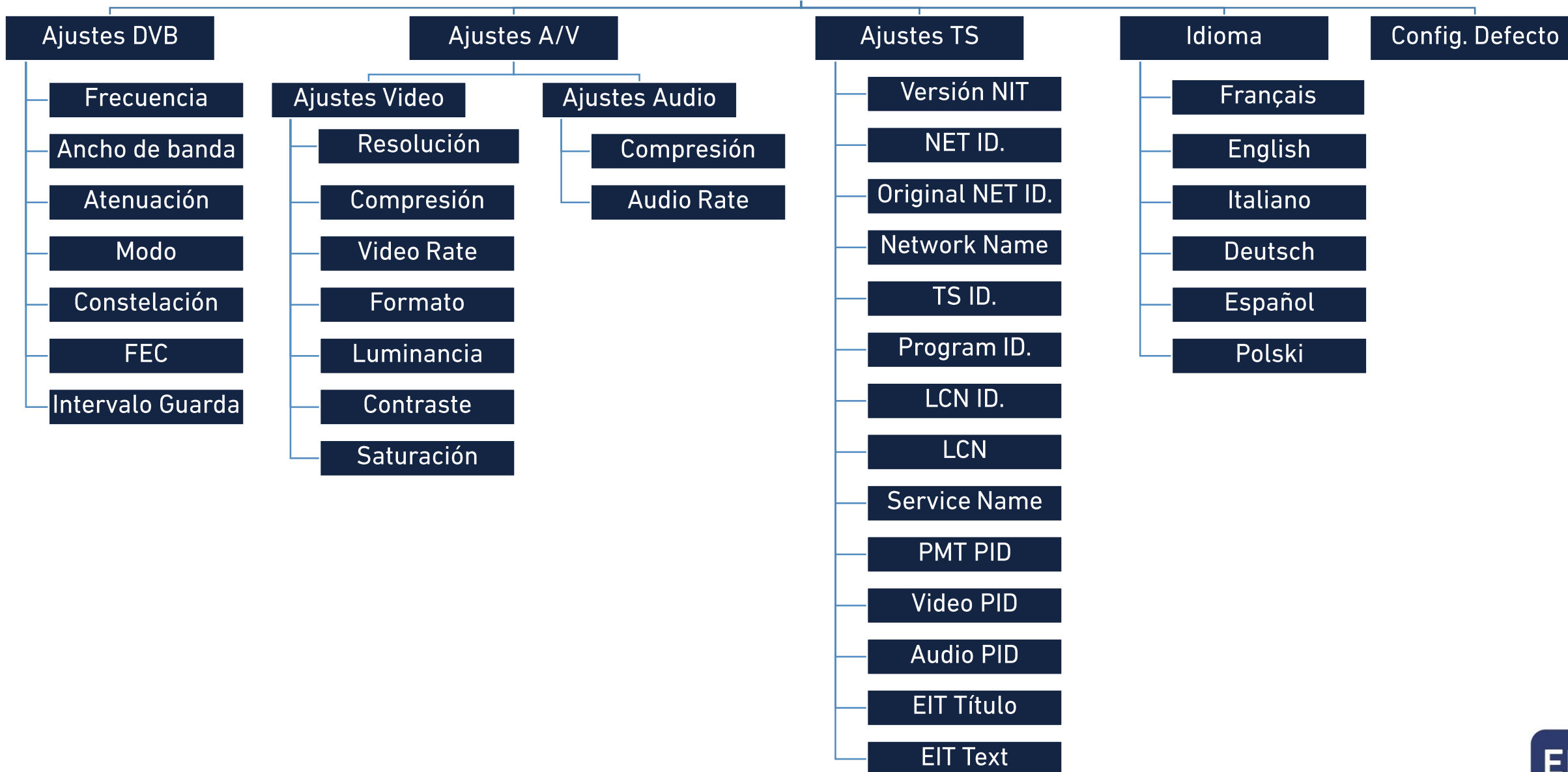
EN

Confirm (Enter)

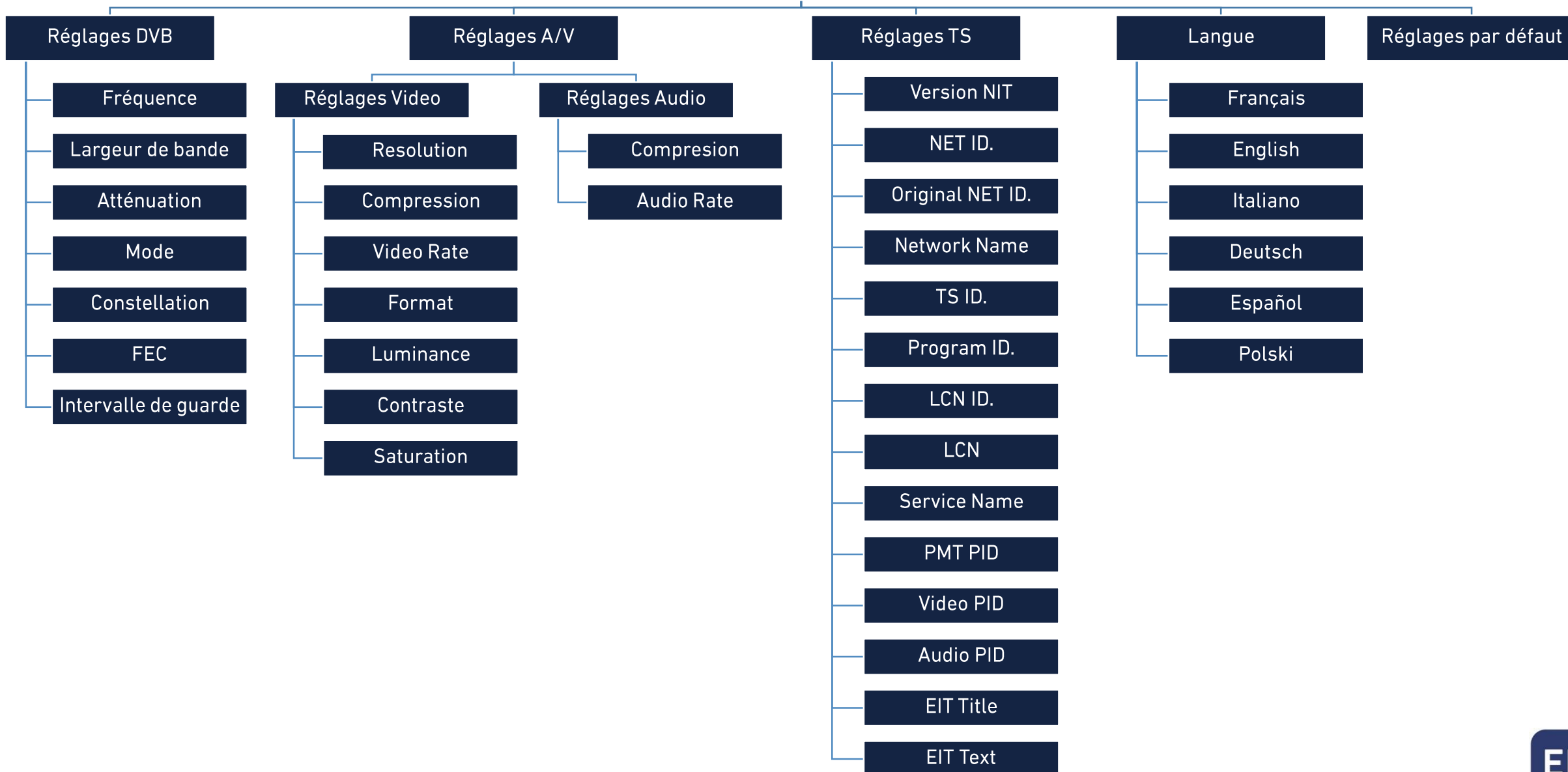
Left movement through submenus options

Right movement through submenus options

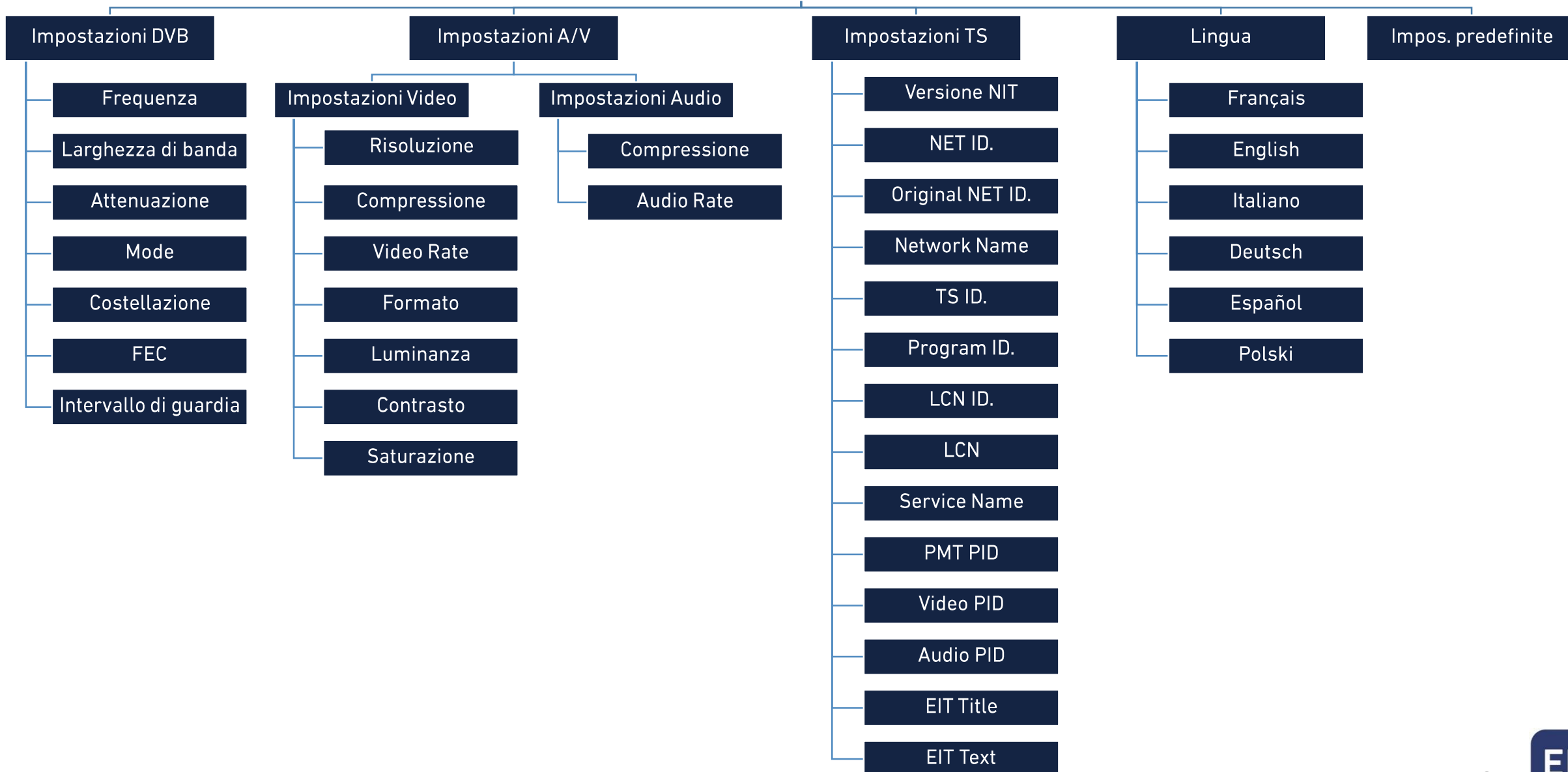
Menú Principal



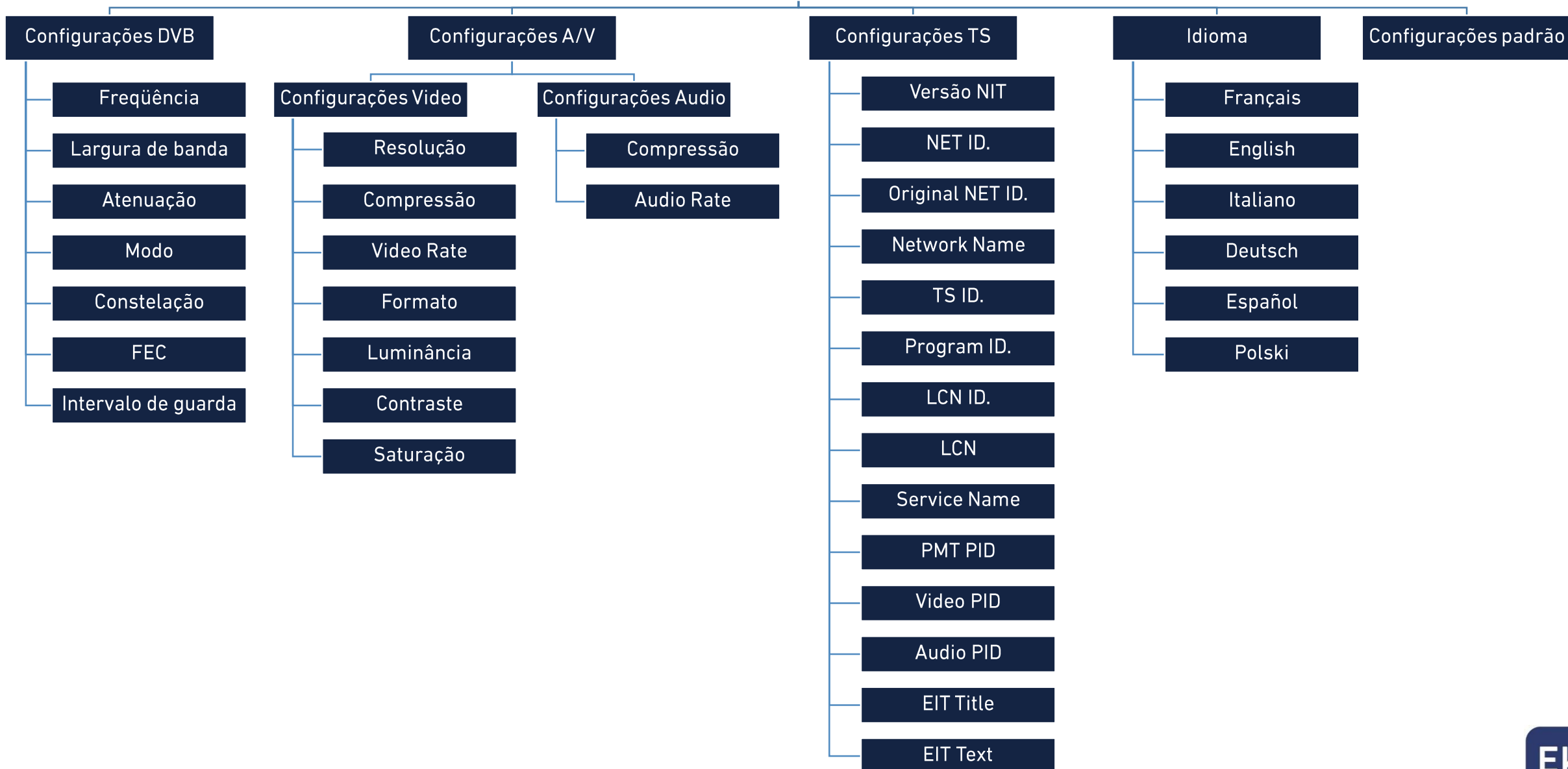
Menu Principal

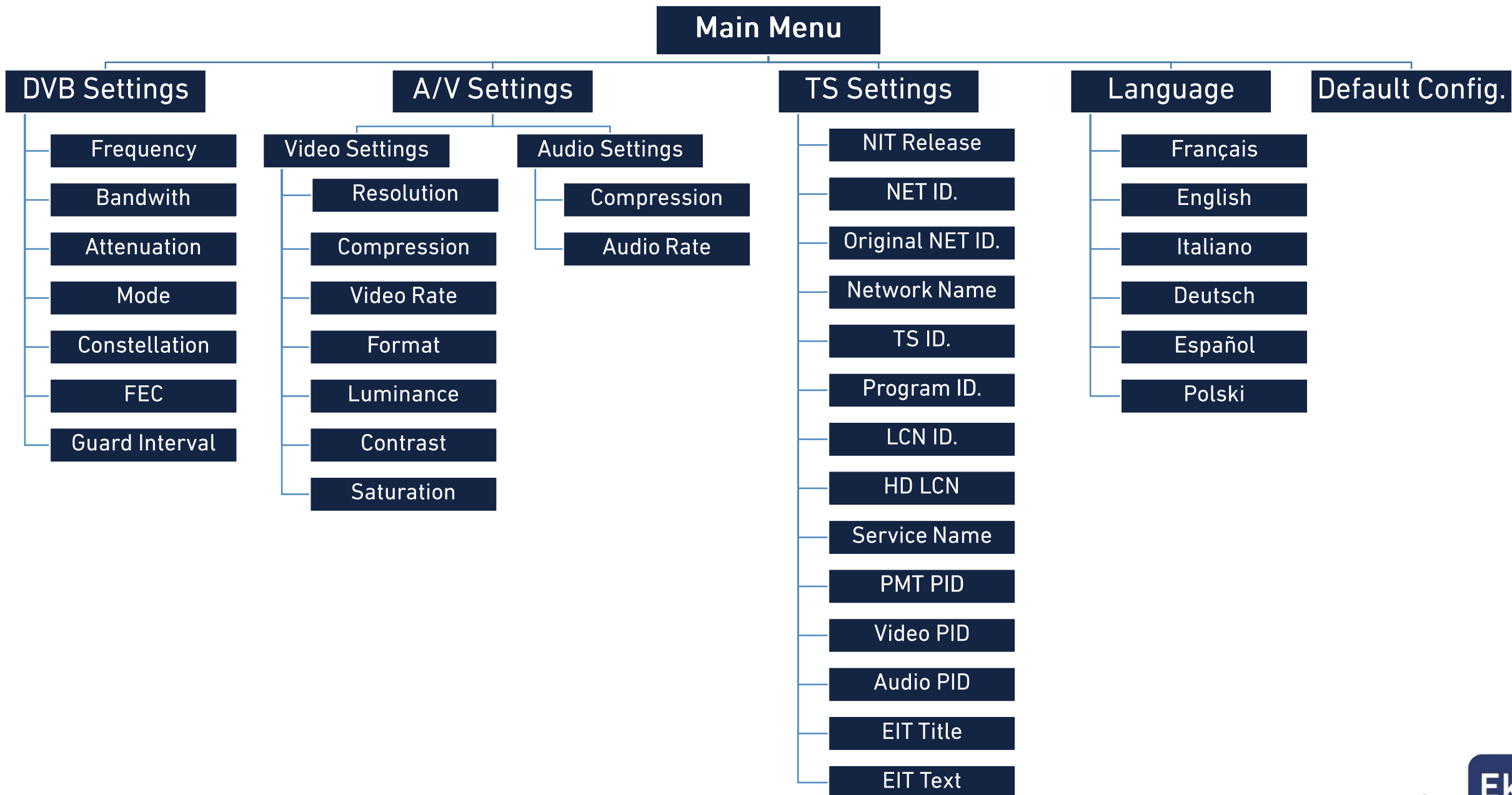


Menu Principale



Menu Principal





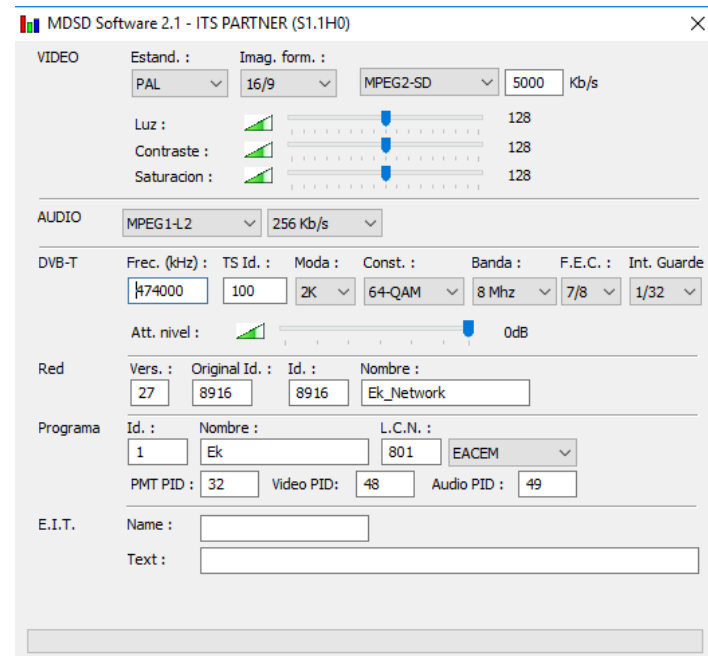
1. En el caso de usar más de un modulador para la misma instalación, es necesario modificar el program ID, para que sean distintos.
2. El MD SD se puede programar mediante un software para PC (MDSOsoft). Se puede descargar de nuestra web www.ekselansbyits.com
3. Una vez instalado, conectar el MD SD al PC mediante un cable USB y ejecutar el programa. En el display del MD SD aparecerá "USB" y en el PC la siguiente ventana

1. Dans le cas de l'utilisation de plus d'un modulateur pour la même installation, il est nécessaire de modifier l'ID du programme. Ils doivent être différents.
2. Le MD SD peut être programmé par un logiciel PC (MDSOsoft). Il peut être téléchargé à partir de notre site web www.ekselansbyits.com
3. Une fois installé, connectez le MD SD au PC via le câble USB et lancez le programme. L'écran affiche le message USB et sur le PC, la fenêtre suivante apparaît

1. Nel caso di utilizzare più di un modulatore sullo stesso impianto, è necessario modificare l'ID del programma. Essi devono essere diversi.
2. Il prodotto può essere programmato tramite un software per PC (MDSOsoft). È disponibile nel nostro sito www.ekselansbyits.com
3. Dopo aver installato il programma, collegare l'MD SD mediante un cavo USB al PC ed eseguire il software. Apparirà "USB" scritto sul display dell'MD SD e la seguente finestra sul PC

1. No caso de usar mais de um modulador para a mesma instalação, é necessário modificar o ID do programa. Eles devem ser diferentes.
2. MD SD pode ser programado por software para PC (MDSOsoft). Descarregar o programa a partir de nosso web www.ekselansbyits.com
3. Uma vez instalado, conecte o MD SD ao PC via cabo USB e execute o programa. O visor mostra o mensagem "USB" e seguinte janela no PC

1. In the case of using more than one modulator for the same installation, it is required to modify the program ID. They must be different.
2. MD SD could be programmed by PC software (MDSOsoft). It can be downloaded from site www.ekselansbyits.com
3. Once it's installed, connect MD SD to PC using a USB cable and launch the software. The word "USB" shall appear on product display and following window on PC



REFERENCIA		RÉFÉRENCE		ARTICOLO		REFERÊNCIA		REFERENCE			MD SD
Código		Code		Codice		Código		Code			122003
Entrada	Entrada vídeo	Entrée	Entrée vidéo	Ingresso	Ingresso video	Entrada	Entrada de vídeo	Input	Video input		CVBS
	Resolución vídeo		Résolution vidéo		Risoluzione video		Resolução de vídeo		Video resolution		PAL (720x576) / NTSC (720x480)
	Compresión vídeo		Compression vidéo		Compressione video		Compressão de vídeo		Video compression		H.264, MPEG2, MPEG2-SD
	Entrada de audio		Entrée audio		Ingresso audio		Entrada áudio		Audio input		Stereo x2/ 0,5-2,5 Vpp
	Muestreo de audio		Taux d'échantillonnage		Frequenza di campionamento		Taxa de amostragem		Sample Rate	KHz	48
	Compresión audio		Compresion audio		Compressione de audio		Compressão de áudio		Audio compression		MPEG1-Layer2
Procesado DVB	Inserción tablas	DVB Traitement	Table insertion	Elaborazione DVB	Tabella inserisci	Processamento de DVB	Tabela inserção	DVB Processing	Tables Insertion		PAT, PMT, SDT, NIT
	Configuración		Configuration		Configurazione		Configuração		Configuration		Program name, SID, LCN, NETWORK, NAME, TSD, ONID, NID, VERSION NIT, LCN, PID, PMT, PID VIDEO, PID AUDIO
Modulación DVB-T	Constelación	DVB-T modulation	Constellation	Modulazione DVB-T	Costellazione	Modulação DVB-T	Constelação	DVB-T Modulation	Constellation		QPSK, 16QAM, 64QAM
	FEC		FEC		FEC		FEC		FEC		1/2, 2/3, 3/4, 5/6, 7/8
	Intervalo de guarda		Intervalle de garde		Intervallo di guardia		Intervalo de guarda		Guard Interval		1/4, 1/8, 1/16, 1/32
	Modo COFDM		Mode COFDM		Modo COFDM		Modo COFDM		COFDM Mode		2K / 8K
Salida	Rango de frecuencias	Sortie	Plage de Fréquences	Uscita	Intervallo di frequenze	Saída	Gama de frequências	Output	Frequency range	MHz	47 - 862
	Ancho de banda		Largeur Bande		Banda freq.		Banda de freq.		Bandwidth	MHz	6 / 7 / 8
	Nivel de Salida		Niveau de sortie		Livello di uscita		Nível de saída		Output Level	dBµV	>80
	Regulación		Réglage		Regolazione		Regulação		Regulation	dB	<30
General	Entrada de mezcla	Général	Entrée mélanger	Generale	Mix di ingresso	Geral	Entrada Misture	General	Loop Input	dB	-2
	Programación		Programmation		Programmazione		Programação		Programming		Front Buttons / USB
	Alimentación		Alimentation		Alimentazione		Alimentação		Voltage feeding	V	5
	Consumo		Consommation		Consumo		Consumo		Consumption	W	10
	Dimensiones		Dimensions		Dimensioni		Dimensões		Dimensions	mm	170 x 130 x 35
	Peso		Poids		Peso		Peso		Weight	Kg	0,6

	Channel	Srtar Freq.	End Freq.	Video Carrier	Central Freq.		Channel	Srtar Freq.	End Freq.	Video Carrier	Central Freq.		Channel	Srtar Freq.	End Freq.	Video Carrier	Central Freq.
B. I	2	47 MHz	54 MHz	48,25 MHz	50,50 MHz	Hyper Band	S21	302 MHz	309 MHz	303,25 MHz	305,50 MHz	Band IV	21	470 MHz	478 MHz	471 MHz	474 MHz
	3	54 MHz	61 MHz	55,25 MHz	57,50 MHz		S22	309 MHz	316 MHz	310,25 MHz	312,50 MHz		22	478 MHz	486 MHz	479 MHz	482 MHz
	4	61 MHz	68 MHz	62,25 MHz	64,50 MHz		S23	316 MHz	323 MHz	317,25 MHz	319,50 MHz		23	486 MHz	494 MHz	487 MHz	490 MHz
Band S Low	S3	118 MHz	125 MHz	119,25 MHz	121,50 MHz		S24	323 MHz	330 MHz	324,25 MHz	326,50 MHz		24	494 MHz	502 MHz	495 MHz	498 MHz
	S4	125 MHz	132 MHz	126,25 MHz	128,50 MHz		S25	330 MHz	337 MHz	331,25 MHz	333,50 MHz		25	502 MHz	510 MHz	503 MHz	506 MHz
	S5	132 MHz	139 MHz	133,25 MHz	135,50 MHz		S26	337 MHz	344 MHz	338,25 MHz	340,50 MHz		26	510 MHz	518 MHz	511 MHz	514 MHz
	S6	139 MHz	146 MHz	140,25 MHz	142,50 MHz		S27	344 MHz	351 MHz	345,25 MHz	347,50 MHz		27	518 MHz	526 MHz	519 MHz	522 MHz
	S7	146 MHz	153 MHz	147,25 MHz	149,50 MHz		S28	351 MHz	358 MHz	352,25 MHz	354,50 MHz		28	526 MHz	534 MHz	527 MHz	530 MHz
	S8	153 MHz	160 MHz	154,25 MHz	156,50 MHz		S29	358 MHz	365 MHz	359,25 MHz	361,50 MHz		29	534 MHz	542 MHz	535 MHz	538 MHz
	S9	160 MHz	167 MHz	161,25 MHz	163,50 MHz		S30	365 MHz	372 MHz	366,25 MHz	368,50 MHz		30	542 MHz	550 MHz	543 MHz	546 MHz
S10	167 MHz	174 MHz	168,25 MHz	170,50 MHz	S31		372 MHz	379 MHz	373,25 MHz	375,50 MHz	31		550 MHz	558 MHz	551 MHz	554 MHz	
B. III	5	174 MHz	181 MHz	175,25 MHz	177,50 MHz		S32	379 MHz	386 MHz	380,25 MHz	382,50 MHz		32	558 MHz	566 MHz	559 MHz	562 MHz
	6	181 MHz	188 MHz	182,25 MHz	184,50 MHz		S33	386 MHz	393 MHz	387,25 MHz	389,50 MHz		33	566 MHz	574 MHz	567 MHz	570 MHz
	7	188 MHz	195 MHz	189,25 MHz	191,50 MHz		S34	393 MHz	400 MHz	394,25 MHz	396,50 MHz		34	574 MHz	582 MHz	575 MHz	578 MHz
	8	195 MHz	202 MHz	196,25 MHz	198,50 MHz		S35	400 MHz	407 MHz	401,25 MHz	403,50 MHz		35	582 MHz	590 MHz	583 MHz	586 MHz
	9	202 MHz	209 MHz	203,25 MHz	205,50 MHz		S36	407 MHz	414 MHz	408,25 MHz	410,50 MHz		36	590 MHz	598 MHz	591 MHz	594 MHz
	10	209 MHz	216 MHz	210,25 MHz	212,50 MHz		S37	414 MHz	421 MHz	415,25 MHz	417,50 MHz		37	598 MHz	606 MHz	599 MHz	602 MHz
	11	216 MHz	223 MHz	217,25 MHz	219,50 MHz		S38	421 MHz	428 MHz	422,25 MHz	424,50 MHz		38	606 MHz	614 MHz	607 MHz	610 MHz
Band S High	12	223 MHz	230 MHz	224,25 MHz	226,50 MHz		S39	428 MHz	435 MHz	429,25 MHz	431,50 MHz		39	614 MHz	622 MHz	615 MHz	618 MHz
	S11	230 MHz	237 MHz	231,25 MHz	233,50 MHz		S40	435 MHz	442 MHz	436,25 MHz	438,50 MHz		40	622 MHz	630 MHz	623 MHz	626 MHz
	S12	237 MHz	244 MHz	238,25 MHz	240,50 MHz		S41	442 MHz	449 MHz	443,25 MHz	445,50 MHz		41	630 MHz	638 MHz	631 MHz	634 MHz
	S13	244 MHz	251 MHz	245,25 MHz	247,50 MHz		Band V	42	638 MHz	646 MHz	639 MHz		642 MHz				
	S14	251 MHz	258 MHz	252,25 MHz	254,50 MHz			43	646 MHz	654 MHz	647 MHz		650 MHz				
	S15	258 MHz	265 MHz	259,25 MHz	261,50 MHz			44	654 MHz	662 MHz	655 MHz		658 MHz				
	S16	265 MHz	272 MHz	266,25 MHz	268,50 MHz			45	662 MHz	670 MHz	663 MHz		666 MHz				
	S17	272 MHz	279 MHz	273,25 MHz	275,50 MHz			46	670 MHz	678 MHz	671 MHz		674 MHz				
	S18	279 MHz	286 MHz	280,25 MHz	282,50 MHz			47	678 MHz	686 MHz	679 MHz		682 MHz				
	S19	286 MHz	293 MHz	287,25 MHz	289,50 MHz			48	686 MHz	694 MHz	687 MHz		690 MHz				
S20	293 MHz	300 MHz	294,25 MHz	296,50 MHz	49			694 MHz	702 MHz	695 MHz	698 MHz						
					50			702 MHz	710 MHz	703 MHz	706 MHz						
					51			710 MHz	718 MHz	711 MHz	714 MHz						
					52	718 MHz	726 MHz	719 MHz	722 MHz								
					53	726 MHz	734 MHz	727 MHz	730 MHz								
					54	734 MHz	742 MHz	735 MHz	738 MHz								
					55	742 MHz	750 MHz	743 MHz	746 MHz								
					56	750 MHz	758 MHz	751 MHz	754 MHz								
					57	758 MHz	766 MHz	759 MHz	762 MHz								
					58	766 MHz	774 MHz	767 MHz	770 MHz								
					59	774 MHz	782 MHz	775 MHz	778 MHz								
					60	782 MHz	790 MHz	783 MHz	786 MHz								
					61	790 MHz	798 MHz	791 MHz	794 MHz								
					62	798 MHz	806 MHz	799 MHz	802 MHz								
					63	806 MHz	814 MHz	807 MHz	810 MHz								
					64	814 MHz	822 MHz	815 MHz	818 MHz								
					65	822 MHz	830 MHz	823 MHz	826 MHz								
					66	830 MHz	838 MHz	831 MHz	834 MHz								
					67	838 MHz	846 MHz	839 MHz	842 MHz								
					68	846 MHz	854 MHz	847 MHz	850 MHz								
					69	854 MHz	862 MHz	855 MHz	858 MHz								

- ES Tabla de canales y frecuencias (Standard B/G)
- FR Tableau de canaux et fréquences (Standard B/G)
- IT Tabella frequenze e canali (Standard B/G)
- PT Tabela de canais e frequências (Standard B/G)
- EN Frequency and channels table (Standard B/G)



Ekselans by ITS is a registered trademark of
ITS Partner (O.B.S.) S.L.
Av. Corts Catalanes 9-11
08173 Sant Cugat del Vallès (Barcelona)
www.ekselansbyits.com

