

---

# LNBs

---

**LNB 11P · LNB 21P · LNB 40P**

**Ltè2**

- √ LNBs PLL
- √ Modelos single (1 SAÍDA), twin (2 SAÍDAS) e QUAD (4 SAÍDAS).
- √ Ganho de 55dB (médio)
- √ Para instalações individuais com 1, 2 e 4 usuários



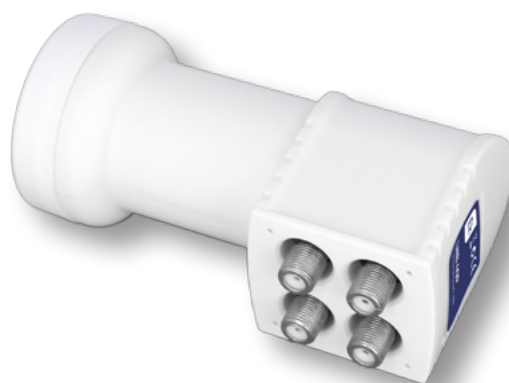
**EKSELANS BY ITS**



**LNB 11P**



**LNB 21P**



**LNB 40P**



## TABELA TÉCNICA

REFERENCE		LNB 11P	LNB 21P	LNB 40P
Code		022028	022029	022030
Type		Single	Twin	Quad
Input Frequency	GHz	10,7 - 11,7 / 11,7 - 12,75	10,7 - 11,7 / 11,7 - 12,75	10,7 - 11,7 / 11,7 - 12,75
PLL Oscillator				
O.L1 Frequency	GHz	9,75 (0KHz)	9,75 (0KHz)	9,75 (0KHz)
O.L2 Frequency	GHz	10,6 (22KHz)	10,6 (22KHz)	10,6 (22KHz)
O.L Stability	MHz	±2 dB (-30...+70°C)	±2 dB (-30...+70°C)	±2 dB (-30...+70°C)
B1 Output Frequency	MHz	950 - 1950	950 - 1950	950 - 1950
B2 Output Frequency	MHz	1100 - 2150	1100 - 2150	1100 - 2150
Gain	dB	55 Typ.	55 Typ.	55 Typ.
Noise Figure	dB	0,3	0,3	0,3
Phase Noise	dBc/Hz	-50 (10 KHz) -75 (100 KHz)	-50 (10 KHz) -75 (100 KHz)	-50 (10 KHz) -75 (100 KHz)
Power Supply / Polarity Control	Vdc	10,5-14 (V) 16-20 (H)	10,5-14 (V) 16-20 (H)	10,5-14 (V) 16-20 (H)
Consumption	mA	80	140	210
Cross-Polarity Rejection	dB	25 Typ	25 Typ	25 Typ
Operating Temperature	°C	-30...+60	-30...+60	-30...+60