

CM HEADEND

CM 8TC-IP

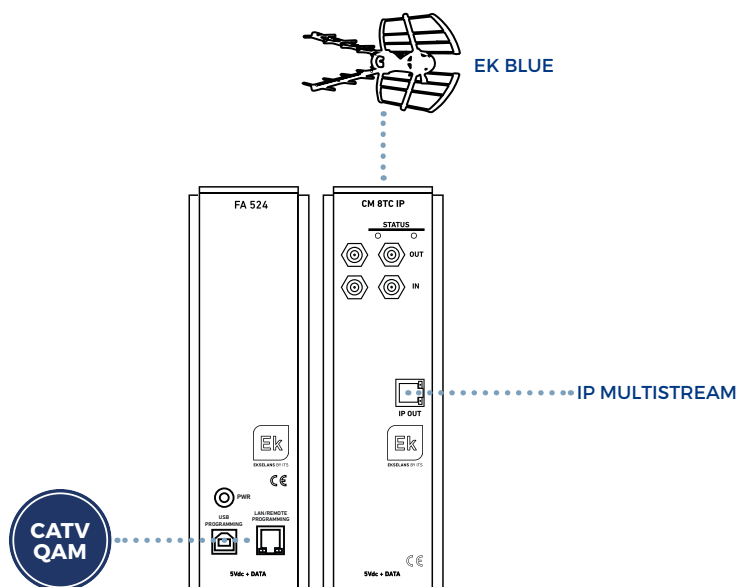


- ✓ Ground OCTO module and cable (DVB-T/T2/C)
- ✓ 1 input / 8 independent tuners
- ✓ Input loop
- ✓ 1000Mbps IP output SPTS/MPTS in UDP/RTP format
- ✓ Up to 64 output streams
- ✓ Lynk DRM
- ✓ SAP function
- ✓ IGMP Query and IGMP Auto-Join
- ✓ Programming via PC software (CM Management)
- ✓ Configuration cloning and report generation
- ✓ On-site management (FA 510 / CM PR) or remote management (FA 524) via CM KEY



CM 8TC-IP

Diagram





TECHNICAL TABLE

REFERENCE		CM 8TC-IP
Code		082293
INPUT		
Number of inputs		1x RF
Number of tuners		8
DVB-T/T2 Reception		
Input frequency	MHz	110 - 862
Input level	dB μ V	33-88
Constellation - Mode		QPSK, 16, 64, 256QAM 1K, 2K, 4K, 8K, 16K, 32K
DVB-C Reception		
Input frequency	MHz	42 - 1002
Input level	dB μ V	46 - 88
Constellation - Mode	- / MHz	QPSK, 16, 32, 64, 128, 256 QAM / 6, 7, 8
Symbol rate	MSps	1 - 7.2
Supported annexes		A, B y C
OUTPUT		
Connector		RJ45 - Fast Ethernet
Routing scheme		Unicast / Multicast
Maximum services		64 (SPTS / MPTS)
Protocols		UDP / RTP / QoS / SAP
Functions		IGMP Query and IGMP Auto-Joint
GENERAL		
Local programming		Through USB cable / RJ45 (LAN) with FA 524 or CM PR
Remote programming		Through RJ45 (Internet) (CM Key)
Power supply	Vdc	5
Consumption	mA	1700
Operating temperature	°C	0 - 40

- Specifications and design are subject to change without prior notice.

- The product meets the requirements governed by the CE marking. The declaration of conformity is available on the website www.ek.plus.