

# CLOUD PRO

compatible with **AX** WiFi SERIES

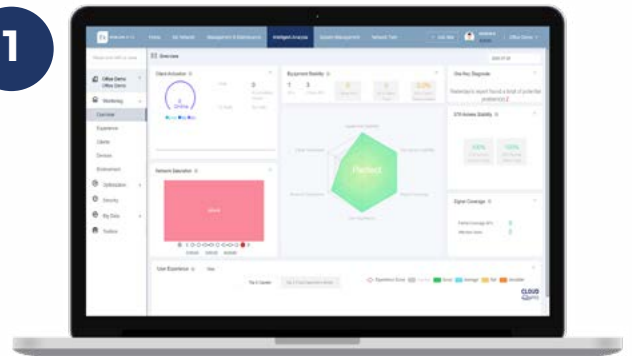
UNIFIED CLOUD-BASED WIFI NETWORK  
MANAGEMENT PLATFORM

<https://cloudpro.ek.plus/>

**Ek**

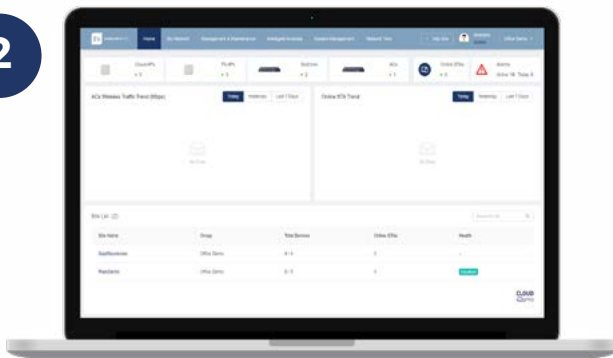
EKSELANS BY ITS

1



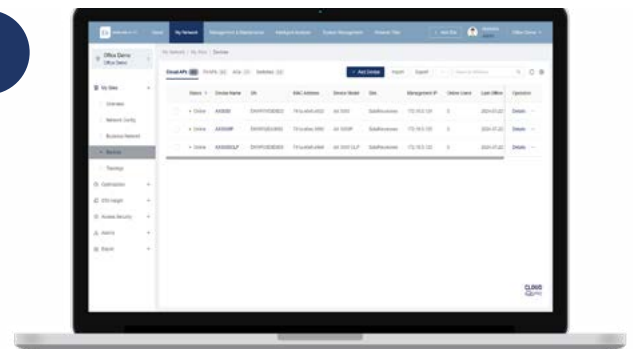
Enables the design, deployment,  
configuration, operation, and real-time  
analysis of WiFi networks

2



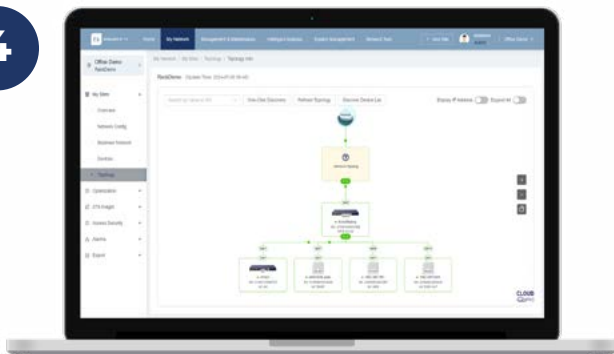
Management of all network devices:  
access points, switches, and controllers

3



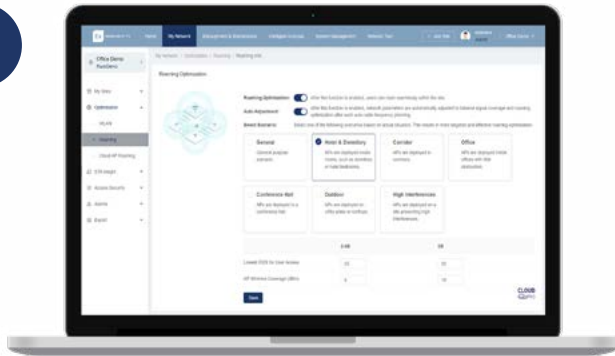
Remote execution of monitoring and  
diagnostic tasks for device connection  
status, configuration deployment,  
firmware updates, equipment reboots,  
and more

4



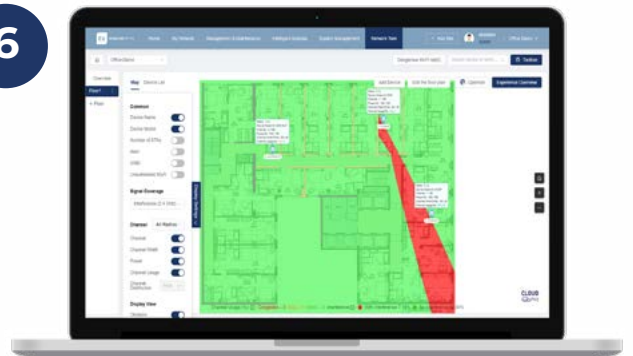
Automatic network provisioning option  
with auto-identification of the  
network topology

5



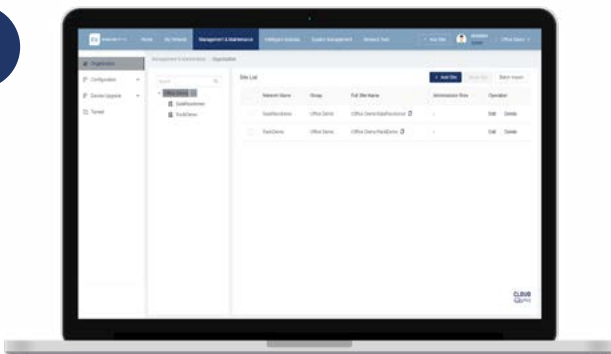
Network optimization and smart roaming between devices

6



Includes a WiFi network design and planning tool (site survey and heat maps)

7



Allows the creation and monitoring of an unlimited number of projects/ installations for each user

8



EU-based cloud servers

All of this with the highest standards of cybersecurity, based on cloud servers located in Europe



## TECHNICAL TABLE

FUNCTION PARAMETERS	CLOUD PRO MANAGEMENT NETWORK
Network overview	Device Statistics: Total devices, offline devices, daily upload and download traffic, and real-time online terminals. User and Traffic Data: Number of users and traffic trends (today, previous day, last seven days). Site Information: Site name, devices, offline devices, alarms, and online users. Map Views: Allows switching between different map views.
Device Management	This feature allows: Configuration Management: Configure SSID and CLI for branch devices. Import/Export: Bulk import and export of devices, modify and delete multiple devices, and perform backup and recovery of configurations. Device Monitoring: View online status, version, CPU, and memory. Radio Frequency Information: Check channel, power, bandwidth, and channel utilization across different radio interfaces. Templates and Configurations: Use templates and custom configurations to implement hierarchical setups.
Configuration Management	This function supports delivering configurations in batches. It also supports scheduled configuration delivery.
Firmware Upgrade	Device Updates: Allows firmware updates on: A single device. Multiple devices simultaneously. Grouped devices. Devices based on firmware version. Logging and Tracking: Records all update operations. Enables tracking and verification of each update. User-Based Management: Supports update management for different users or groups within the same platform.
Terminal Management	Online user list (MAC address, IP address, SN of associated AP, SSID, online duration, frequency band (2.4 GHz/5 GHz), RSSI, air interface latency, packet loss rate, uplink and downlink rate, operating system, vendor information) STA experience trend (STA online and offline record in the past 24 hours, graphical display of STA experience indicators) Intelligent STA Diagnosis
Alarm	Device offline alarms, frequent online/offline alarms, RF alarms (device channel congestion) Alarm alerts can be sent by email.
Permission Management	Permission Management: Hierarchical Permissions: Accounts at different levels can only manage (view/configure) devices in their assigned location. Permission Assignment: Permissions are managed and assigned by menu.
One-click overview	Through intuitive display of network information such as overview, experience, users, devices, and environment, users can clearly understand the current network operating status.
One-click network optimization	CloudPRO supports intelligent optimization of channel, power, and access, and also supports wireless roaming optimization.
One-click diagnosis	The network problems can be diagnosed in a single click. More than 100 configuration rules are supported, and the device, experience, and configuration problems can be automatically identified.
One-click report	The acceptance report can be exported in WORD or PDF format by one click.
Security Radar	WiFi
Time Capsule	Configuration changes are recorded and can be queried.
Baseline Analysis	The baseline of network experience metrics are analyzed so that normal value range can be predicted and abnormal value can be marked out.
CLOUD PRO bandwidth consumption estimation	
Scale	5000 STAs
Peak data volume (5 minutes)	10 MB
Average bandwidth in peak hours	400 kbps
Average bandwidth (within one week)	60 kbps