



EKSELANS BY ITS

# PROFESSIONAL IPTV SERVERS, TRANSCODING, TRANSRATING, AND CONTENT DELIVERY

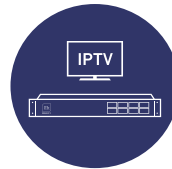


ENTER THE EK WORLD

# PROFESSIONAL IPTV SERVERS, TRANSCODING, TRANSRATING, AND CONTENT DELIVERY

## EK STREAM PLUS

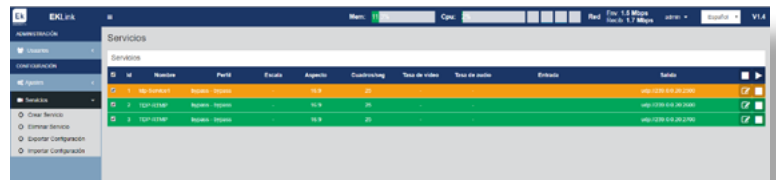
- ✓ Module for transcoding signals to be transmitted over WiFi / Internet networks
- ✓ Network usage statistics
- ✓ Memory and CPU usage statistics
- ✓ Import and export configurations
- ✓ Management of multiple user profiles



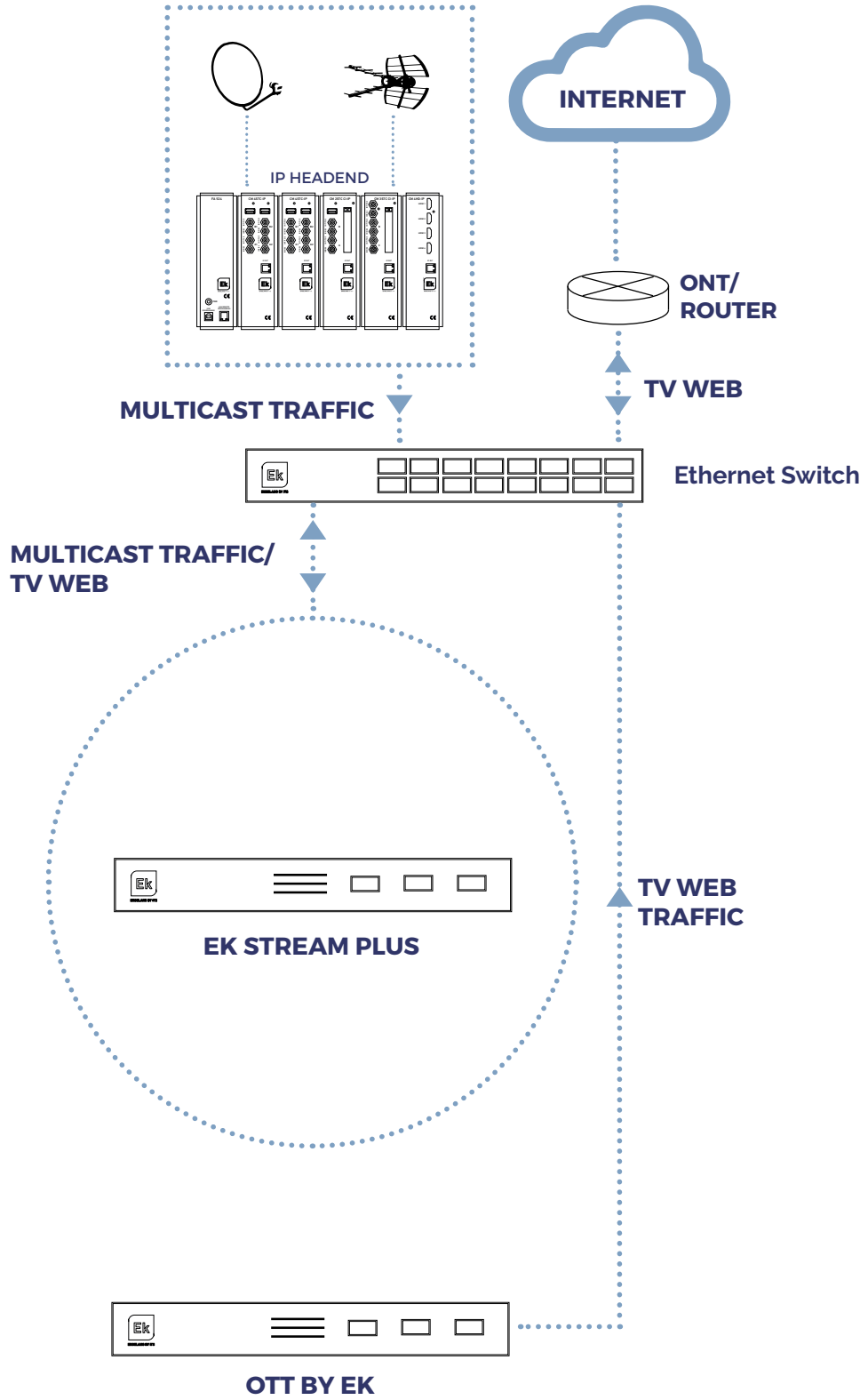
REFERENCE		EK STREAM PLUS
Code		280044
Input		
Signal		IP Multicast (UDP) / WebTV (RTMP (Push/Pull) , HLS, MPEG-DASH)
Interface	Mbps	10/100/1000
Supported codecs*	Video	MPEG-1 video / MPEG-2 video / H.264 / H.265 HEVC
	Audio	AAC / AAC LATM / AAC ADTS / MPEG4 ASC / MP1 / MP2 / MP3
Output		
Signal		IP Multicast (UDP) / WebTV (RTMP (Push/Pull) , HLS, MPEG-DASH)
Interface	Mbps	10/100/1000
Supported codecs*	Video	MPEG-1 video / MPEG-2 video / H.264 / H.265 HEVC
	Audio	AAC / AAC LATM / AAC ADTS / MPEG4 ASC
Deinterlacer		Yes
Maximum Resolution	Pixels	Until 4K
Transcoding*		
Video		MPEG2-HD to MPEG2-SD MPEG2-HD to H264-HD / H264-SD MPEG2-SD to H264-SD H264-HD to H264-SD H265 to H264-HD / H264-SD
Audio		Supported input codecs to AAC Supported input codecs to AAC-low latency AAC ADTS to MPEG4 ASC
Others		
Number of programs**		30 SD services to SD or 15 HD services to SD / HD or 10 H265 HD services to HD
Scheduling		Web interface
Format	mm	Rack 19" - 1U
Operating temperature	°C	0-40
Power consumption	W	≤460

\*Other options to consult

\*\*Reference values depending on encoding and bit rate



# EXAMPLE OF APPLICATION



# PROFESSIONAL IPTV SERVERS, TRANSCODING, TRANSRATING, AND CONTENT DELIVERY

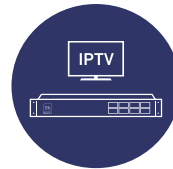
REFERENCE		EK LINK
Code		280029
Input		
Signal		IP Multicast (UDP) / WebTV (RTMP (Push/Pull) , HLS, MPEG-DASH)
Interface	Mbps	10/100/1000
Supported codecs*	Video	MPEG-1 video / MPEG-2 video / H.264 / H.265 HEVC
	Audio	AAC / AAC LATM / AAC ADTS / MPEG4 ASC / MP1 / MP2 / MP3
Output		
Signal		IP Multicast (UDP) / WebTV (RTMP (Push/Pull) , HLS, MPEG-DASH)
Interface	Mbps	10/100/1000
Supported codecs*	Video	MPEG-1 video / MPEG-2 video / H.264 / H.265 HEVC
	Audio	AAC / AAC LATM / AAC ADTS / MPEG4 ASC
Deinterlacer		Yes
Maximum Resolution	Pixels	Until 4K
Transcoding*		
Video		Not available
Audio		Supported codecs for input to AAC AAC ADTS to MPEG4 ASC
Others		
Number of programs**		Up to 20 SD services or 15 HD services
Scheduling		Web interface
Power supply voltage	V	5
Power consumption	mA	< 3000
Format	mm	Modular (55 x 220 x116)
Operating temperature	°C	0-40

\*Other options to consult

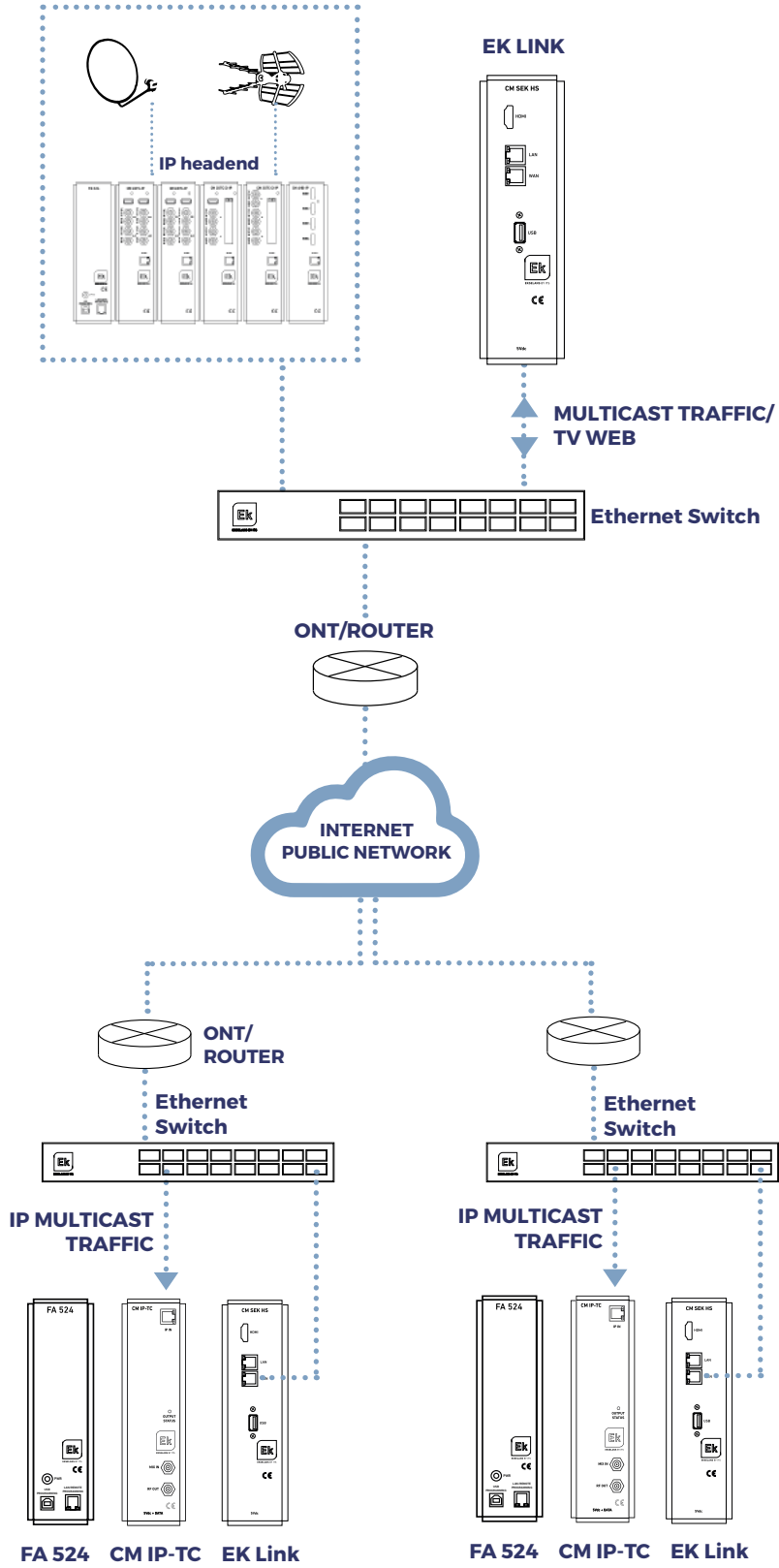
\*\*Reference values depending on encoding and bitrate

## EK LINK

- √ Bidirectional IP converter/adaptor between multicast protocols and webTV (HLS / RTMP / MPEG-DASH)
- √ Allows receiving services from different cloud servers
- √ Configuration cloning
- √ Memory and CPU usage statistics



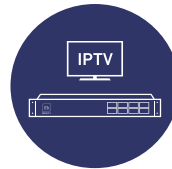
# EXAMPLE OF APPLICATION



## PROFESSIONAL IPTV SERVERS, TRANSCODING, TRANSRATING, AND CONTENT DELIVERY

### EK BRIDGE

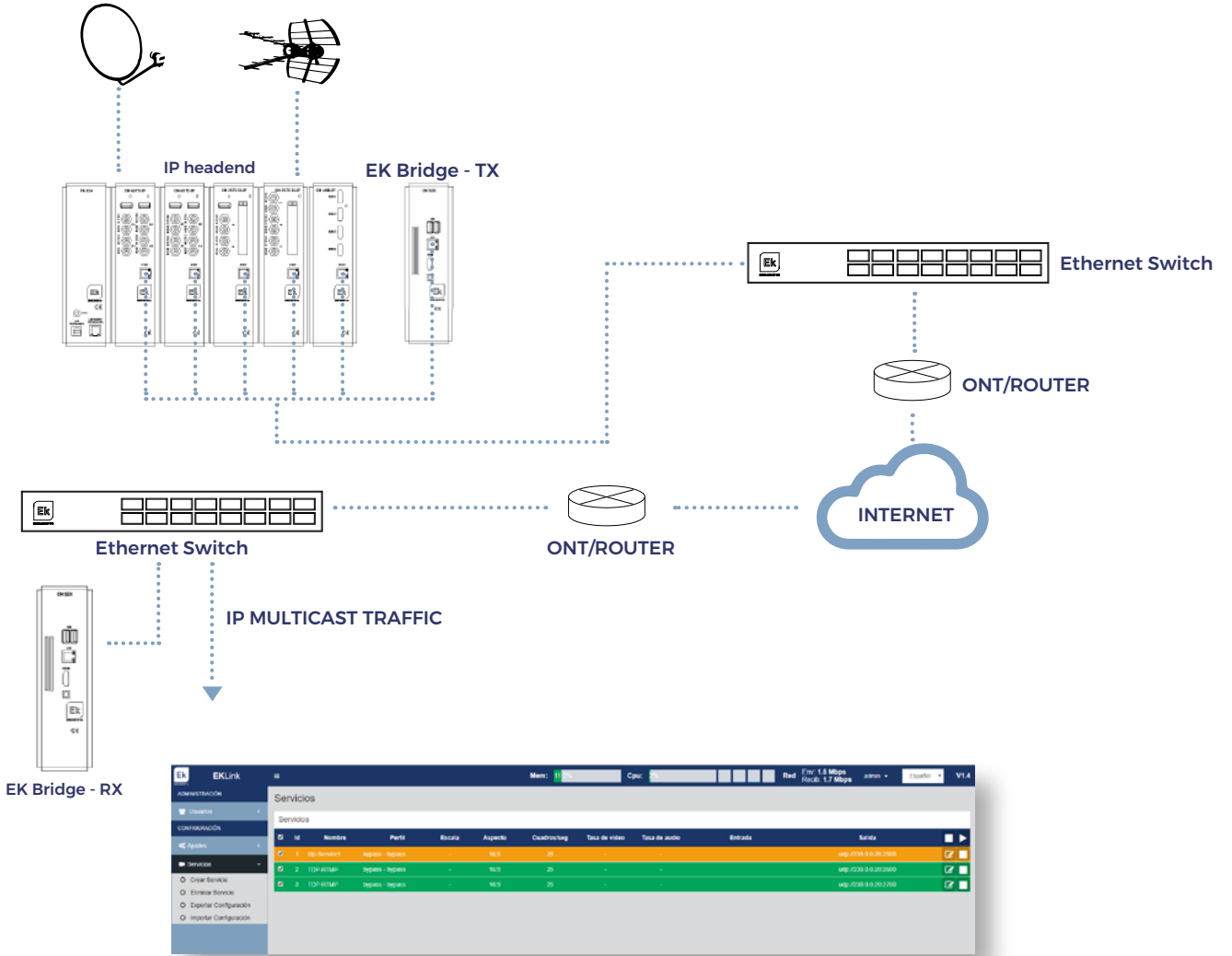
- √ Module for creating point-to-point links for IP TV transmission over the internet
- √ Generates stable links using the public internet network
- √ Configurable as transmitter or receiver
- √ CPU / Memory statistics Indicación de uso de red



REFERENCE		EK BRIDGE
Code		280026
Configuration		Receiver or Transmitter
Input / Output Interface	Mbps	10/100/1000
TRANSMITTER MODE		
Input Format		UDP Multicast
Maximum number of input services		20
Output Encapsulation		HTTP
RECEIVER MODE		
Input Format		HTTP
Maximum number of input services		20
Output Format		UDP Multicast
Scheduling		Web Interface
Format	mm	Modular (55 x 220 x116)
Operating Temperature	°C	0-40



# EXAMPLE OF APPLICATION





**EKSELANS BY ITS**

**ITS Partner O.B.S. S.L**  
**Av. Cerdanyola 79-81 Local C**  
08172 Sant Cugat del Vallès  
Barcelona (Spain)  
Tel: +34 935839543  
info@ek.plus  
www.ek.plus