



EKSELANS BY ITS



SINGLE-FAMILY VIDEO DOOR KIT



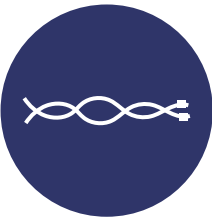
ENTER THE EK WORLD

2-WIRE SINGLE-FAMILY VIDEO DOOR KITS

General specifications



Single-Family Video Door Kit



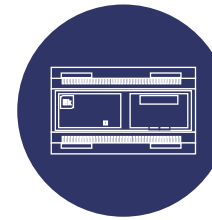
Non-polarized 2 wires system



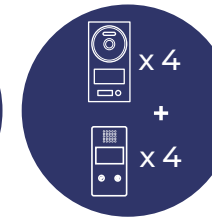
Outdoor panel with camera, push button, and Mifare access control



Hands-free 4.3-inch color touch screen monitor with wall-mount support



DIN rail supply

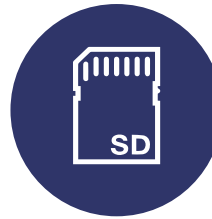


Up to 4 outdoor panels and up to 4 outdoor panels

Only with KIT HOME WIFI



WiFi monitor option for smartphone call



Call recording through SD card (not included)



Automatic opening system through time-based configuration



Do Not Disturb Mode



Voice mailbox system



KIT HOME 322003



Kit with:

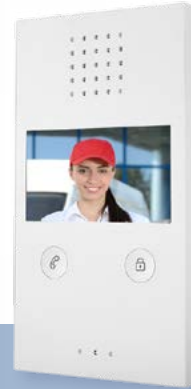
PE 1BM: Outdoor panel

MON 43V: 4.3" touch screen monitor

PFA 2420: power supply



PE 1BM
321013



MON 43V
320003



PFA 2420
323002

- ✓ Single-Family Video Door Kit
- ✓ Installation with 2 non-polarized wires
- ✓ Outdoor panel with camera, push button, and Mifare access control
- ✓ Hands-free 4.3-inch color monitor with wall-mount support
- ✓ DIN rail installation power supply
- ✓ Expandable up to 4 monitors and 4 outdoor panels

KIT HOME WIFI 322004



Download



Kit with:

PE 1BM: Outdoor panel

MON 43W: Touchscreen monitor 4,3" WiFi

PFA 2420: Power supply



PE 1BM
321013



MON 43W
320005



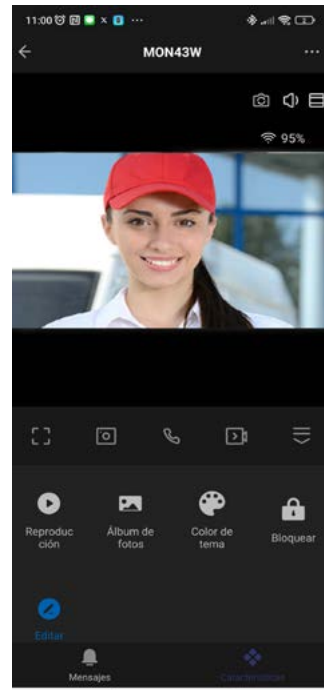
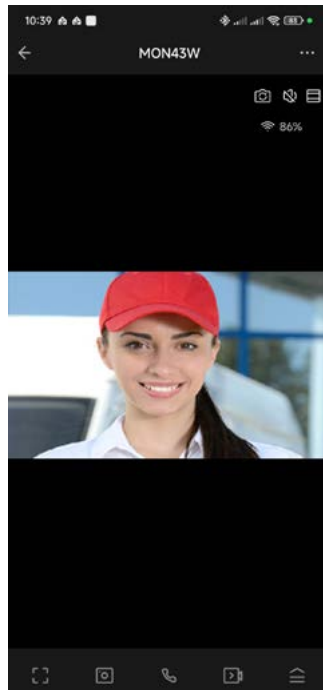
PFA 2420
323002

- ✓ Single-Family Video Door Kit
- ✓ Installation with 2 non-polarized wires
- ✓ Outdoor panel with camera, push button, and Mifare access control
- ✓ Hands-free 4.3-inch color monitor with wall-mount support
- ✓ Wi-Fi Connection for Call Forwarding and Remote Door Opening via Smartphone using the EK SMART App
- ✓ DIN rail installation power supply
- ✓ Expandable up to 4 monitors and 4 outdoor panels

KIT HOME WIFI 322004



Download





EKSELANS BY ITS

EKSELANS by ITS
ITS Partner O.B.S. S.L

Av. Cerdanyola 79-81 Local C
08172 Sant Cugat del Vallès
Barcelona (Espanya)
Tel: +34 93 583 95 43
info@ek.plus
www.ek.plus