



EKSELANS BY ITS

**TR ENTERPRISE  
SERIES.  
PROFESSIONAL  
WIFI ACCESS  
POINT SYSTEM**

ENTER THE EK WORLD



# TR ENTERPRISE SERIES PROFESSIONAL WIFI ACCESS POINT SYSTEM.

TR ENTERPRISE  
PROFESSIONAL WIFI  
ACCESS POINTS



Ekcelans by ITS R&D team has fully developed the new series of TR Enterprise WiFi access points, based on the extensive experience provided by the countless WiFi installations made with EK access points.



The TR Enterprise Series is based on a very powerful hardware design on which software has been developed capable of responding to the most demanding market demands in terms of connectivity, connection speed, high concurrent users and high demand for multimedia services (HD videos, streaming, online gaming,...). Hotels, hospitals, offices, industrial facilities, shopping malls, individual houses and apartments,... Wherever connectivity requirements ask for a professional solution, the TR Enterprise Series is the right choice.



DC

LED

WAN  
POE

LAN

RESET

**WHEREVER CONNECTIVITY REQUIREMENTS  
ASK FOR A PROFESSIONAL SOLUTION, THE TR  
ENTERPRISE SERIES IS THE RIGHT CHOICE.**

## TR Enterprise Series Key-Points

- IEEE 802.11ac Wave 2
- Data-rate capacity from 1300Mbps (dual-band) to 2200Mbps (tri-band)
- MU-MIMO technology for simultaneous communication with multiple devices.
- Up to 8 spatial streams for high concurrency of simultaneous users
- Beamforming technology with wireless transmission beam adaptation
- Roaming 802.11k / v / r
- Supports SSID Broadcasting and multiple SSIDs
- 5GHz network prioritization for decongestion of the 2.4GHz band
- Possibility of user isolation
- Simple programming via web interface in several languages
- Contextual help menus in real time
- Adjustable high Wireless power
- 2 GE LAN ports (10/100/1000Mbps)
- PoE 802.3at 48Vdc power supply or autonomous with external power supply
- Easy-to-intall ceiling or wall mounting
- High quality housing with high heat dissipation. Suitable for any type of environment (-30°C - 70°C)
- Possibility of centralized management and provisioning through EK controllers (UC TRB, UC TR and UC HS)
- Access points combinable with the EK network hotspot and auditing (CM HS and HS BASIC)

**802.11ac  
Wave 2**

**MU-MIMO**

**8 spatial  
streams**

**Roaming  
802.11k/v/r**

**2 x GE  
LAN  
PORTS**

**5GHz  
PRIORITIZATION**

**Menús de  
ayuda en  
tiempo real**



# TR ENTERPRISE SERIE

## TR 1300

REFERENCE	TR 1300
Code	331000
Hardware:	
Chipset	Qualcomm IPQ4019+QCA9886+QCA8075
Standard	802.11ac/b/g/n, MIMO technology
DDR3	512MB
Flash	32MB
2.4G Frequency	2.4GHz - 2.484GHz
2.4G Wi-Fi standard	802.11b/g/n
5.8G Frequency	IPQ4019: 5.150GHz-5.320GHz; QCA9886: 5.500GHz!5.825GHz
5.8G Wi-Fi Standard	802.11 a/n/ac
Interface	1 * 10/100 /1000Mbps RJ45 WAN Port
	1 * 10/100 / 1000Mbps RJ45 LAN Port
	1 * Reset button, press 10 seconds to revert to default setting
Antenna	Build in 3dBi MIMO Antenna
Data Rate	1300Mbps
End Users	150+
RF Power	£ 25dBm
DC	12V 2A
PoE	48V (IEEE 802.3at)
LED light	Sys, WAN, LAN
ESD	±4KV
Max Power Consumption	£ 24W
Size	198mm * 198mm * 41.02mm
Weight	Net weight: 786.7g
Firmware Features:	
Operation mode	Wireless AP: Plug and Play Gateway: Dynamic IP/ Static IP/PPPoE Wi-Fi Repeater: Bridge exist wireless signal, then extend to more range. WISP: For WLAN ISP, bridge ISP's exist wireless signal, then dial-up to obtain Ethernet and extend more wireless range.
Wireless Functions	Multiple SSID functions: 2.4GHz: 4; 5.8GHz: 8
	Support SSID hidden
	Support seamless roaming, 802.11kvr standard.
	Support 5G Prior for a faster Ethernet.
	Wireless Security: Open, WPA, WPA2PSK, TKIPAES, WAP2_EAP, 802.1x
	Support MAC filter
	Support Wi-Fi time on/off to save energy
	Support client isolation to improve the wireless stability
	Support RF power adjustable, adjust the RF power based on environment.
Support user quantity limited, Max 64 users to access each band.	
Networking Function	VLAN settings
	Cloud access support in gateway mode
Device Management	Back-up the configuration
	Restore the configuration
	Reset to factory default
	Reboot the device: including time reboot or reboot immediately
	Admin management password modify
	Firmware upgrade
	System log
Support firmware GUI web management, AC controller management, remote management and cloud management	
Protocols	IPv4
Others:	
Environment	Operating Temperature: -20-55 Limit working temperature: -30-70 Storage Temperature: -40-70 Humidity: 5%-95% non-condensing

- IEEE 802.11ac Wave 2
- Data-rate capacity from 1300Mbps (dual-band) to 2200Mbps (tri-band)
- MU-MIMO technology for simultaneous communication with multiple devices.
- Up to 8 spatial streams for high concurrency of simultaneous users
- Beamforming technology with wireless transmission beam adaptation
- Roaming 802.11k / v / r
- Supports SSID Broadcasting and multiple SSIDs
- 5GHz network prioritization for decongestion of the 2.4GHz band
- Possibility of user isolation
- Simple programming via web interface in several languages
- Adjustable high Wireless power
- 2 GE LAN ports (10/100/1000Mbps)
- PoE 802.3at 48Vdc power supply or autonomous with external power supply
- Easy-to-intall ceiling or wall mounting
- High quality housing with high heat dissipation. Suitable for any type of environment (-30°C - 70°C)
- Possibility of centralized management and provisioning through EK controllers (UC TRB, UC TR and UC HS)
- Access points combinable with the EK network hotspot and auditing (CM HS and HS BASIC)



# TR ENTERPRISE SERIE

Ek



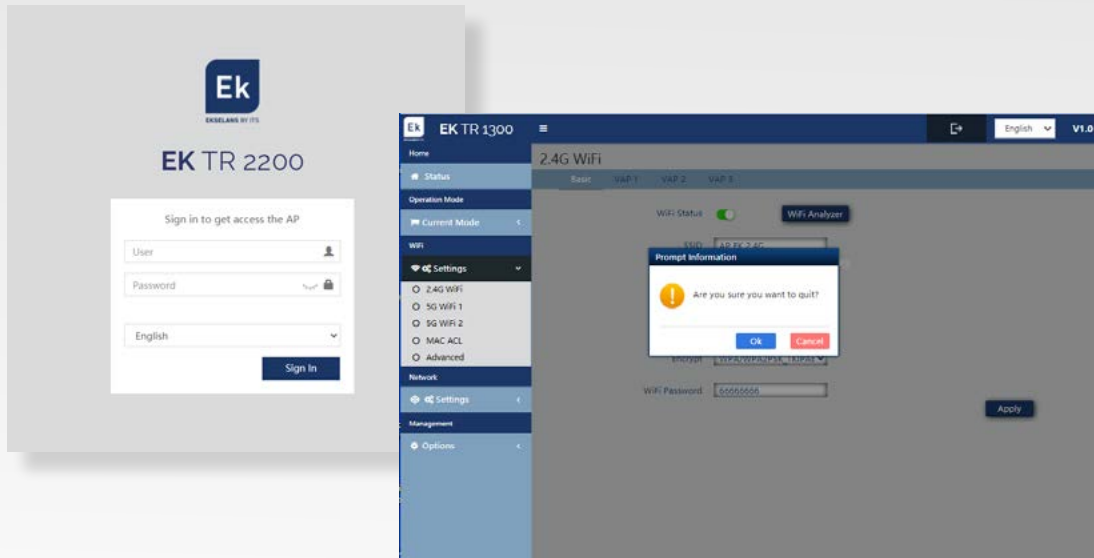
## TR 2200

- IEEE 802.11ac Wave 2
- Data-rate capacity from 1300Mbps (dual-band) to 2200Mbps (tri-band)
- MU-MIMO technology for simultaneous communication with multiple devices.
- Up to 8 spatial streams for high concurrency of simultaneous users
- Beamforming technology with wireless transmission beam adaptation
- Roaming 802.11k / v / r
- Supports SSID Broadcasting and multiple SSIDs
- 5GHz network prioritization for decongestion of the 2.4GHz band
- Possibility of user isolation
- Simple programming via web interface in several languages
- Adjustable high Wireless power
- 2 GE LAN ports (10/100/1000Mbps)
- PoE 802.3at 48Vdc power supply or autonomous with external power supply
- Easy-to-intall ceiling or wall mounting
- High quality housing with high heat dissipation. Suitable for any type of environment (-30°C - 70°C)
- Possibility of centralized management and provisioning through EK controllers (UC TRB, UC TR and UC HS)
- Access points combinable with the EK network hotspot and auditing (CM HS and HS BASIC)

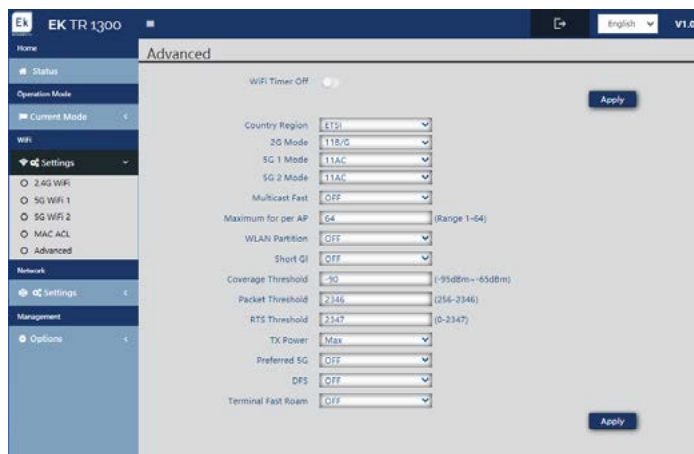


REFERENCE	TR 2200
Code	331001
Hardware:	
Chipset	Qualcomm IPQ4019+QCA9886+QCA8075
Standard	802.11ac/b/g/n, MIMO technology
DDR3	512MB
Flash	32MB
2.4G Frequency	2.4GHz - 2.484GHz
2.4G Wi-Fi standard	802.11b/g/n
5.8G Frequency	IPO4019: 5.150GHz-5.320GHz; QCA9886: 5.500GHz/5.825GHz
5.8G Wi-Fi Standard	802.11 a/n/ac
Interface	1 * 10/100 / 1000Mbps RJ45 WAN Port
	1 * 10/100 / 1000Mbps RJ45 LAN Port
	1 * Reset button, press 10 seconds to revert to default setting
Antenna	Build in 3dBi MIMO Antenna
Data Rate	2200Mbps
End Users	150+
RF Power	£ 25dBm
DC	12V 2A
PoE	48V (IEEE 802.3at)
LED light	Sys, WAN, LAN
Surge	Different Mode: ±2KV, Common Mode: ±4KV
ESD	±4KV
Max Power Consumption	£ 24W
Size	198mm * 198mm * 41.02mm
Weight	Net weight: 786.7g
Firmware Features:	
Operation mode	Wireless AP: Plug and Play Gateway: Dynamic IP/ Static IP/PPPoE Wi-Fi Repeater: Bridge exist wireless signal, then extend to more range. WISP: For WLAN ISP, bridge ISP's exist wireless signal, then dial-up to obtain Ethernet and extend more wireless range.
Wireless Functions	Multiple SSID functions: 2.4GHz: 4; 5.8GHz: 8
	Support SSID hidden
	Support seamless roaming, 802.11kvr standard.
	Support 5G Prior for a faster Ethernet.
	Wireless Security: Open, WPA, WPA2PSK, TKIPAES, WAP2_EAP, 802.1x
	Support MAC filter
	Support Wi-Fi time on/off to save energy
	Support client isolation to improve the wireless stability
Networking Function	Support RF power adjustable, adjust the RF power based on environment.
	Support user quantity limited, Max 64 users to access each band.
Device Management	VLAN settings
	Cloud access support in gateway mode
	Back-up the configuration
	Restore the configuration
	Reset to factory default
	Reboot the device: including time reboot or reboot immediately
	Admin management password modify
Firmware upgrade	
System log	
Support firmware GUI web management, AC controller management, remote management and cloud management	
Protocols	IPv4
Others:	
Package Contents	2200Mbps Dual Band wireless access point Ethernet Cable / Quick Installation Guide Installation Accessory
Environment	Operating Temperature: -20-55 Limit working temperature: -30-70 Storage Temperature: -40-70 Humidity: 5%-95% non-condensing

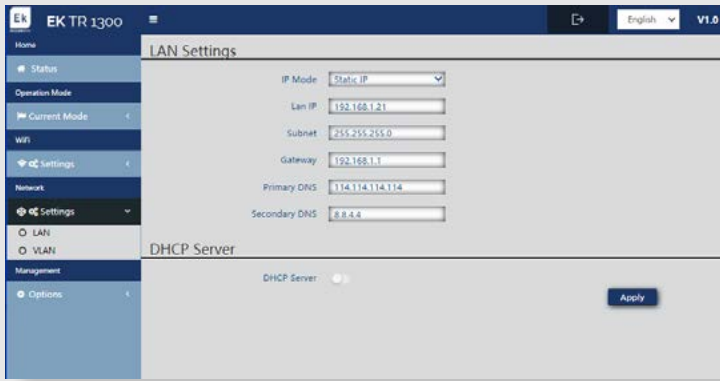
# TR ENTERPRISE SERIES PROFESSIONAL WIFI ACCESS POINT SYSTEM.



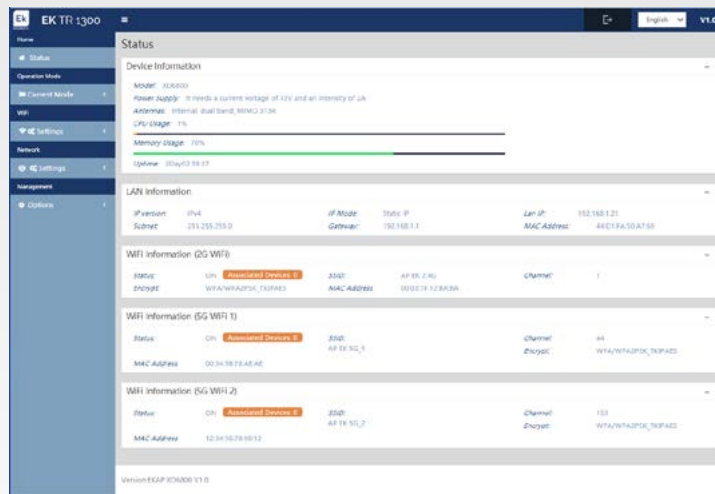
LOGIN & LOGOUT



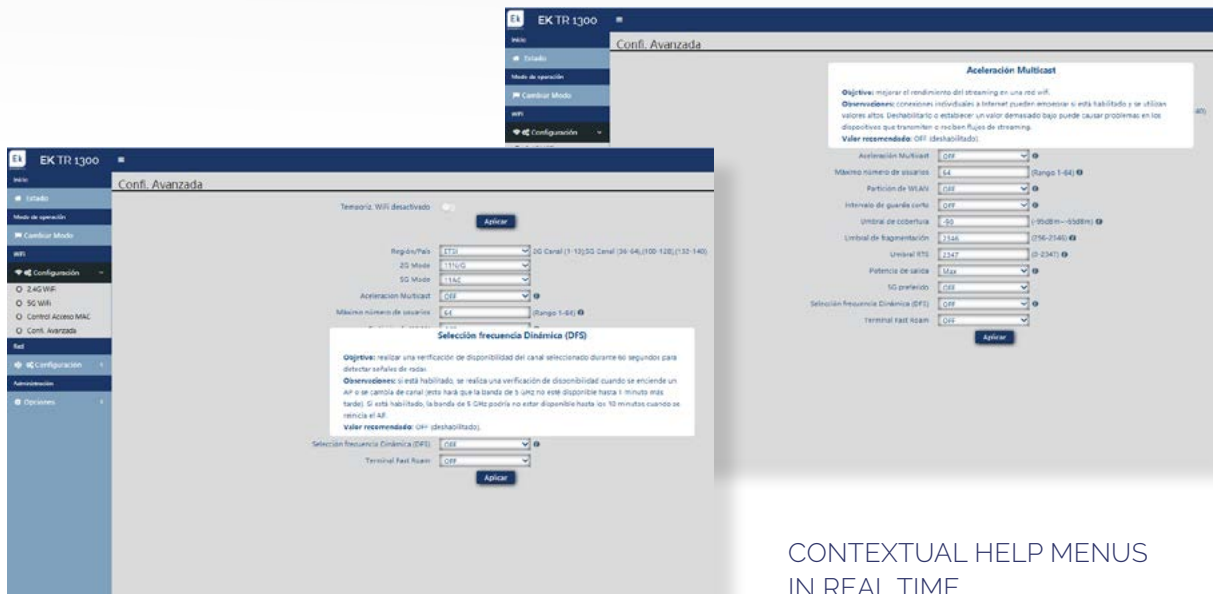
ADVANCED SETTINGS



NETWORK SETTINGS



STATUS



CONTEXTUAL HELP MENUS  
IN REAL TIME



**EKSELANS BY ITS**

**EKSELANS by ITS**

**ITS Partner O.B.S. S.L**

Av. Cerdanyola 79-91 Local C

08172 Sant Cugat del Vallès

Barcelona (España)

Tel: +34 93 583 95 43

[info@ek.plus](mailto:info@ek.plus)

[www.ek.plus](http://www.ek.plus)