



EKSELANS BY ITS

EK RANGE OF STRUCTURED CABLING



ENTER THE EK WORLD



Cat5e U/UTP LAN Cable

PVC CPR Eca

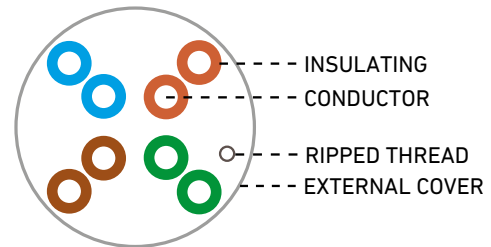
CLU 5 CCA

- 4 twisted pairs
- Plastic spool for easy pulling
- 25 AWG
- CPR Eca

**CPR
Eca**

Reference		CLU5CCA
Code		390009
Construction	Screening	U/UTP
	Conductor material	CCA
	Diameter	24 AWG (0.50±0.005mm)
	Insulation material	HDPE
	Nominal diameter	0.90±0.05mm
	Outside cover material	PVC
	External diameter	5.0±0.3mm
	Color	White RAL9010
	Cross-pair separator	No
	Rip cord	Si
Electrical characteristics	Frequency range	1-100MHz
	Impedance	100±15Ω
	Mutual capacitance	≤56nF/Km
	Maximum unbalanced DC resistance	≤9.5Ω/100m
General	Minimum bend radius	30mm
	Storage Temp Range	-20°C ~ 80°C
	Temp range installation	-20°C ~ 80°C
	Work temperature	-20°C ~ 80°C
	Maximum pulling force	100N
	CPR	Eca
Packaging		Reel in box of 305m
Weight	Kg (Neto / Bruto)	6 / 8
Color code	Par1	Blue - white/blue
	Par2	Orange - white/orange
	Par3	Green - White/green
	Par4	Brown - white/brown

Freq. (MHz)	Att. Max. (dB/100m)	NEXT (dB)	RL (dB)	PS-NEXT (dB)	ELFEXT (dB)	PSELFEXT (dB)
1	2.0	65.3	20.0	62.3	63.8	60.8
4	4.1	56.3	23.0	53.3	51.8	48.8
8	5.8	51.8	24.5	48.8	45.7	42.7
10	6.5	50.3	25.0	47.3	43.8	40.8
16	8.2	47.2	25.0	44.4	39.7	36.7
20	9.3	45.8	25.0	42.8	37.8	34.8
25	10.4	44.3	24.3	41.3	35.8	32.8
31.25	11.7	42.9	23.6	39.9	33.9	30.9
62.5	17.0	38.4	21.5	35.4	27.9	24.9
100	22.0	35.3	20.1	32.3	23.8	20.8



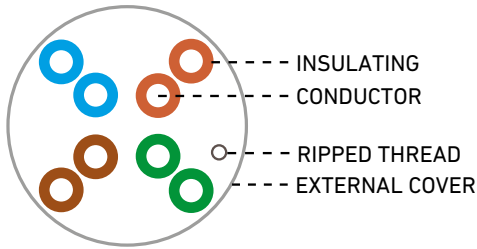
Cat5e U/UTP LAN Cable

PVC CPR Eca

CLU 5 CU

- 4 twisted pairs
- Plastic spool for easy pulling
- 25 AWG
- CPR Eca

CPR
Eca



Reference		CLU5CU
Code		390005
Construction	Screening	U/UTP
	Conductor material	BC, cobre
	Diameter	25 AWG (0.45±0.01mm)
	Insulation material	HDPE
	Nominal thickness	0.195mm
	Diameter	0.83±0.05mm
	Outside cover material	PVC
	Outside diameter	4.8±0.5mm
	Color	Blanco RAL9010
	Cross-pair separator	No
Rip cord	Si	
Electrical characteristics	Frequency range	1-100MHz
	Impedance	120,0Ω/Km
	Mutual capacitance	≤56nF/Km
	Maximum unbalanced capacity	≤330pF/100m
	Maximum unbalanced DC resistance	≤5%
Mechanical characteristics	Minimum bend radius	100mm
	Storage Temp Range	-15°C ~ 75°C
	Temp range installation	-15°C ~ 75°C
	Work temperature	0°C ~ 60°C
	Maximum pulling force	25lbs
	CPR	Eca
Packaging		Reel in box of 305m
Weight	Kg	9,6 / 7,8
Color code	Pair1	Blue - white/blue
	Pair2	Orange - white/orange
	Pair3	Green - White/green
	Pair4	Brown - white/brown

Freq. (MHz)	Att. Max. (dB/100m)	NEXT (dB)	RL (dB)	PS-NEXT (dB)	ELFEXT (dB)	PSELFEXT (dB)
1	3.0	60.0	17.0	57.0	57.4	54.4
4	4.5	53.5	17.0	50.5	45.4	42.4
8	6.3	54.8	17.0	45.63	39.3	36.3
10	7.1	47.0	17.0	44.0	37.4	34.4
16	9.1	43.6	17.0	40.6	33.3	30.3
20	10.2	42.0	17.0	39.0	31.4	28.4
25	11.4	40.3	16.0	37.3	29.4	26.4
31.25	12.9	38.7	15.1	35.7	27.5	24.5
62.5	18.6	33.6	12.1	30.6	21.5	18.5
100	24.0	30.1	10.0	27.1	17.4	14.4

Cat5e U/UTP LAN Cable

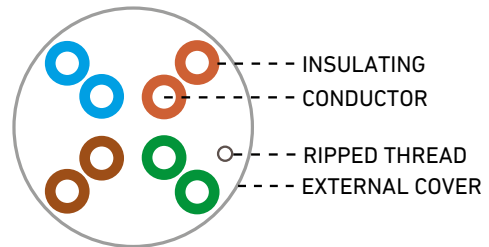
LSZH-UV CPR Eca

CLU5 CU-E

Reference	CLU5CU-E	
Code	390006	
Construction	Screening	U/UTP
	Conductor material	BC, copper
	Diameter	24 AWG (0.48±0.01mm)
	Insulation material	HDPE
	Nominal thickness	0.195mm
	Diameter	0.87±0.05mm
	Outside cover material	LSZH-UV
	Outside diameter	5.0±0.5mm
	Color	White RAL9010
	Cross-pair separator	No
	Rip cord	Yes
Electrical characteristics	Frequency range	1-100MHz
	Impedance	120,0Ω/Km
	Mutual capacitance	≤56nF/Km
	Maximum unbalanced capacity	≤330pF/100m
	Maximum unbalanced DC resistance	≤5%
	Minimum bend radius	100mm
	Storage Temp Range	-15°C - 75°C
	Temp range installation	-15°C - 75°C
	Work temperature	0°C - 60°C
	Maximum pulling force	25lbs
	CPR	Eca
Packaging	Reel in box of 305m	
Weight	Kg	10,3 / 8,5
Color code	Pair1	Blue - white/blue
	Pair2	Orange - white/orange
	Pair3	Green - White/green
	Pair4	Brown - white/brown

- 4 twisted pairs
- Plastic spool for easy pulling
- 24 AWG
- CPR Eca
- White LSZH-UV cover optimized and adapted for external use.

CPR
Eca



Freq. (MHz)	Att. Max. (dB/100m)	NEXT (dB)	RL (dB)	PS-NEXT (dB)	ELFEXT (dB)	PSELFEXT (dB)
1	3.0	60.0	19.0	57.0	58.6	55.6
4	3.9	54.8	19.0	51.8	46.6	43.6
8	5.5	50.0	19.0	47.0	40.6	37.6
10	6.2	48.5	19.0	45.5	38.6	35.6
16	7.9	45.2	19.0	42.2	34.5	31.5
20	8.9	43.7	19.0	40.7	32.6	29.6
25	10.0	42.1	18.0	39.1	30.7	27.7
31.25	11.2	40.5	17.1	37.5	28.7	25.6
62.5	16.2	35.7	14.1	32.7	22.7	19.7
100	21.0	32.3	12.0	29.3	18.6	15.6

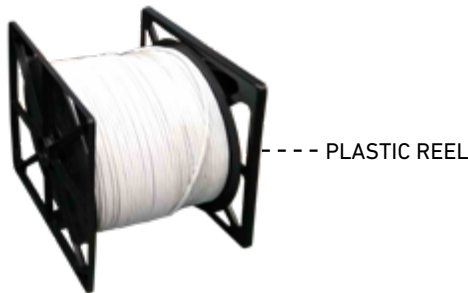
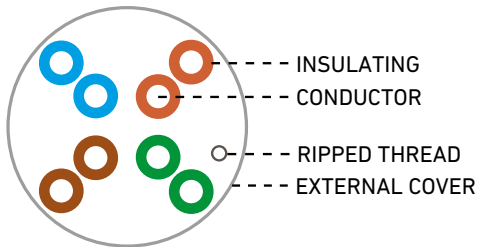
Cat5e F/UTP LAN Cable

LSZH-UV CPR Eca

CLF 5 CU-E

- 4 twisted pairs
- Plastic spool for easy pulling
- 24 AWG
- CPR Eca
- White LSZH-UV cover optimized and adapted for external use

CPR Eca



CLF5 CU-E

Reference Code		CLF5CU-E
		390007
Construction	Screening	F/UTP
	Conductor material	BC, copper
	Diameter	24 AWG (0.50±0.01mm)
	Insulation material	HDPE
	Nominal thickness	0.25mm
	Diameter	1.0±0.05mm
	Outside cover material	LSZH-UV
	Outside diameter	6.0±0.5mm
	Color	Blanco RAL9010
	Cross-pair separator	No
Rip cord	Yes	
Outer shield	Al foil	
Electrical characteristics	Frequency range	1-100MHz
	Impedance	95.8Ω/Km
	Mutual capacitance	≤56nF/Km
	Maximum unbalanced capacity	≤330pF/100m
	Maximum unbalanced DC resistance	≤5%
General	Minimum bend radius	65mm
	Storage Temp Range	-15°C ~ 75°C
	Temp range installation	-15°C ~ 75°C
	Work temperature	0°C ~ 60°C
	Maximum pulling force	25lbs
	CPR	Eca
Packaging		Reel in box of 305m
Weight	Kg	12.8 / 10.6
Color code	Pair1	Blue - white/blue
	Pair2	Orange - white/orange
	Pair3	Green - White/green
	Pair4	Brown - white/brown

Freq. (MHz)	Att. Max. (dB/100m)	NEXT (dB)	RL (dB)	PS-NEXT (dB)	ELFEXT (dB)	PSELFEXT (dB)
1	3.0	60.0	19.0	57.0	58.6	55.6
4	3.9	54.8	19.0	51.8	46.6	43.6
8	5.5	50.0	19.0	47.0	40.6	37.6
10	6.2	48.5	19.0	45.5	38.6	35.6
16	7.9	45.2	19.0	42.2	34.5	31.5
20	8.9	43.7	19.0	40.7	32.6	29.6
25	10.0	42.1	18.0	39.1	30.7	27.7
31.25	11.2	40.5	17.1	37.5	28.7	25.7
62.5	16.2	35.7	14.1	32.7	22.7	19.7
100	21.0	32.3	12.0	29.3	18.6	15.6

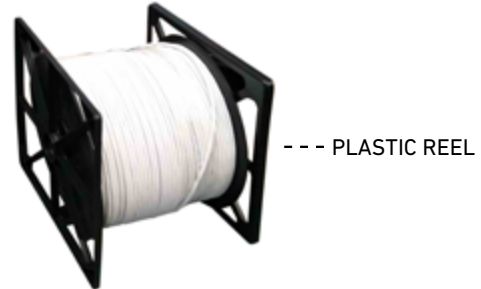
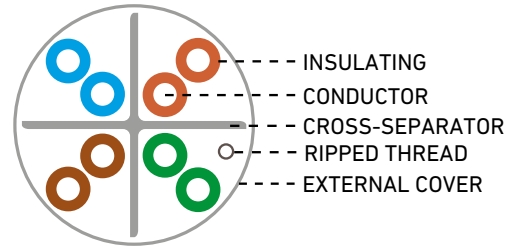
Cat6 U/UTP LAN Cable BC

23 AWG PVC CPR Eca

CLU 6 CCA

- 4 twisted pairs
- Plastic spool for easy pulling
- 23 AWG
- CPR Eca

CPR
Bca



Reference	CLU6CCA	
Code	390008	
Construction	Screening	U/UTP
	Conductor material	CCA
	Diameter	23 AWG (0.57±0.005mm)
	Insulation material	HDPE
	Nominal diameter	1.02±0.05mm
	Outside cover material	PVC-FR
	External diameter	6.10±0.3mm
	Color	White RAL9010
	Cross-pair separator	Si
	Rip cord	Si
Electrical characteristics	Frequency range	1-250MHz
	Impedance	100±15Ω
	Mutual capacitance	≤56nF/Km
	Maximum unbalanced DC resistance	≤9,5Ω/100m
General	Minimum bend radius	30mm
	Storage Temp Range	-20°C ~ 80°C
	Temp range installation	-20°C ~ 80°C
	Work temperature	-20°C ~ 80°C
	Maximum pulling force	100N
	CPR	Eca
Packaging	Reel in box of 305m	
Weight	Kg (Neto / Bruto) 8,5 / 10,5	
Color code	Par1	Blue - white/blue
	Par2	Orange - white/orange
	Par3	Green - White/green
	Par4	Brown - white/brown

Freq. (MHz)	Att. Max. (dB/100m)	NEXT (dB)	RL (dB)	PS-NEXT (dB)	ELFEXT (dB)	PSELFEXT (dB)
1	2.0	74.3	20.0	72.3	67.8	64.8
4	3.8	65.3	23.0	63.3	55.8	52.8
8	5.3	60.8	24.5	58.8	49.7	46.7
10	6.0	59.3	25.0	57.3	47.8	44.8
16	7.6	56.2	25.0	54.2	43.7	40.7
20	8.5	54.8	25.0	52.8	41.8	38.8
25	9.5	53.3	24.3	51.3	39.8	36.8
31.25	10.7	51.9	23.6	49.9	37.9	34.9
62.5	15.4	47.4	21.5	45.4	31.9	28.9
100	19.8	44.3	20.1	42.3	27.8	24.8
200	29.0	39.8	18.0	37.8	21.8	18.8
250	32.8	38.3	17.3	36.3	19.8	16.8



CLU 6 CCA

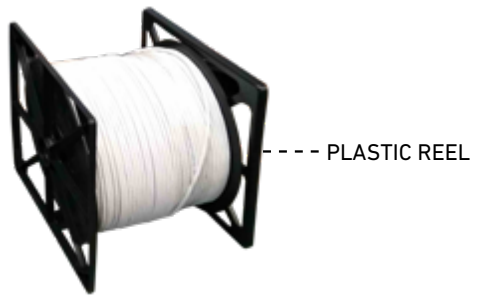
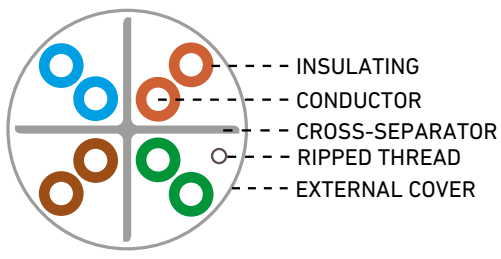
Cat6 U/UTP LAN Cable BC

24 AWG LSZH CPR Eca

CLU 6 CU

- 4 twisted pairs with cross
- Plastic spool for easy pulling
- 24 AWG
- CPR Eca LSZH

CPR
Eca



Reference		CLU6CU
Code		390001
Construction	Screening	U/UTP
	Conductor material	BC, Copper
	Diameter	24 AWG (0.51±0.01mm)
	Insulation material	HDPE
	Nominal thickness	0.21mm
	Diameter	0.93±0.05mm
	Outside cover material	LSZH
	Outside diameter	5.8±0.10mm
	Color	White RAL9010
	Cross-pair separator	yes
Rip cord	yes	
Electrical characteristics	Frequency range	1-250MHz
	Impedance	93.8Ω/Km
	Mutual capacitance	≈56nF/Km
	Maximum unbalanced capacity	≈330pF/100m
	Maximum unbalanced DC resistance	≈5%
General	Minimum bend radius	65mm
	Storage Temp Range	-15°C - 75°C
	Temp range installation	-15°C - 75°C
	Work temperature	0°C - 60°C
	Maximum pulling force	25lbs
	CPR	Eca
Packaging		Reel in box of 305m
Weight	Kg	11,5 / 9,7
Color code	Pair1	Blue - white/blue
	Pair2	Orange - white/orange
	Pair3	Green - White/green
	Pair4	Brown - white/brown

Freq. (MHz)	Att. Max. (dB/100m)	NEXT (dB)	RL (dB)	PS-NEXT (dB)	ELFEXT (dB)	PSELFEXT (dB)
1	3.0	65.0	19.1	62.0	64.2	61.2
4	3.5	64.1	21.0	61.8	52.1	49.1
8	5.0	59.4	21.0	57.0	46.1	43.1
10	5.5	57.8	21.0	55.5	44.2	41.2
16	7.0	54.6	20.0	52.2	40.1	37.1
20	7.9	53.1	19.5	50.7	38.2	35.2
25	8.9	51.5	19.0	49.1	36.2	33.2
31.25	10.0	50.0	18.5	47.5	34.3	31.3
62.5	14.4	45.1	16.0	42.7	28.3	25.3
100	18.6	41.8	14.0	39.3	24.2	21.2
200	27.4	36.9	11.0	34.3	18.2	15.2

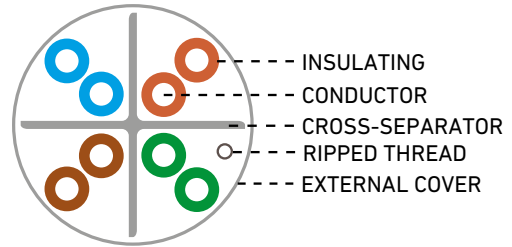
Cat6 U/UTP LAN Cable BC

24 AWG black PE

CLU 6 CUD

- 4 twisted pairs with cross
- Plastic spool for easy pulling
- CPR Dca LSZH

CPR
Dca



CLU 6 CUD

Reference		CLU 6 CUD
Code		390010
Construction	Apantallamiento	U/UTP
	Material del conductor	BC, cobre
	Diámetro del conductor	24 AWG (0,51±0,01mm)
	Material aislamiento	HDPE
	Grosor nominal	0,21mm
	Diámetro	0,93±0,05mm
	Material cubierta exterior	LSZH
	Diámetro exterior	5,8±0,10mm
	Color	Blanco RAL9010
	Cruceta	Si
Hilo de rasgado	Si	
Electrical characteristics	Rango de frecuencias	1-250MHz
	Impedancia	93,8Ω/Km
	Capacidad nominal mutua	≤56nF/Km
	Capacidad máxima no balanceada	≤330pF/100m
	Resistencia máxima DC no balanceada	≤5%
General	Radio de curvatura mínimo	65mm
	Rango Temp. almacenamiento	-15°C ~ 75°C
	Rango Temp. instalación	-15°C ~ 75°C
	Temperatura de trabajo	0°C - 60°C
	Máxima fuerza de tracción	25lbs
Packaging	CPR	Dca
Weight		Carrete en caja de 305m
Peso	Kg	11,5 / 9,7
Color code	Par1	Azul - blanco/azul
	Par2	Naranja - blanco/naranja
	Par3	Verde - blanco/verde
	Par4	Marrón - blanco/marrón

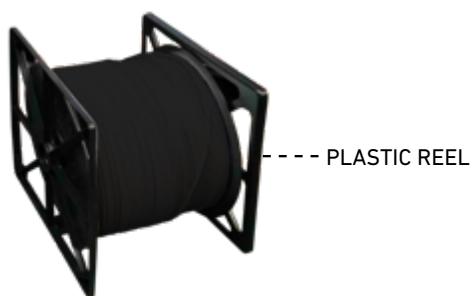
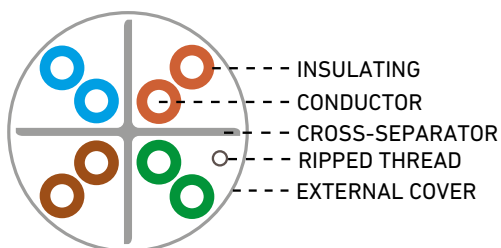
Freq (MHz)	Att. Max. (dB/100m)	NEXT (dB)	RL (dB)	PS-NEXT (dB)	ELFEXT (dB)	PSELFEXT (dB)
1	3.0	65.0	19.1	62.0	64.2	61.2
4	3.5	64.1	21.0	61.8	52.1	49.1
8	5.0	59.4	21.0	57.0	46.1	43.1
10	5.5	57.8	21.0	55.5	44.2	41.2
16	7.0	54.6	20.0	52.2	40.1	37.1
20	7.9	53.1	19.5	50.7	38.2	35.2
25	8.9	51.5	19.0	49.1	36.2	33.2
31.25	10.0	50.0	18.5	47.5	34.3	31.3
62.5	14.4	45.1	16.0	42.7	28.3	25.3
100	18.6	41.8	14.0	39.3	24.2	21.2
200	27.4	36.9	11.0	34.3	18.2	15.2
250	31.1	35.3	10.0	32.7	16.2	13.2

Cat6 U/UTP LAN Cable BC

24 AWG black PE

CLU 6 CU-E

- 4 twisted pairs with cross
- Plastic spool for easy pulling
- Black PE for outdoor use
- 24 AWG



Reference		CLU6CU-E
Code		390002
Construction	Screening	U/UTP
	Conductor material	BC, Copper
	Diameter	24 AWG (0.51±0.01mm)
	Insulation material	HDPE
	Nominal thickness	0.21mm
	Diameter	0.93±0.05mm
	Outside cover material	PE
	Outside diameter	5.6±0.5mm
	Color	Black
	Cross-pair separator	Yes
Rip cord	Yes	
Electrical characteristics	Frequency range	1-250MHz
	Impedance	93.8Ω/Km
	Mutual capacitance	≤56nF/Km
	Maximum unbalanced capacity	≤330pF/100m
	Maximum unbalanced DC resistance	≤5%
General	Minimum bend radius	65mm
	Storage Temp Range	-15°C ~ 75°C
	Temp range installation	-15°C ~ 75°C
	Work temperature	0°C ~ 60°C
	Maximum pulling force	25lbs
Packaging		Reel in box of 305m
Weight	Kg	10.8 / 9
Color code	Pair1	Blue - white/blue
	Pair2	Orange - white/orange
	Pair3	Green - White/green
	Pair4	Brown - white/brown

Freq. (MHz)	Att. Max. (dB/100m)	NEXT (dB)	RL (dB)	PS-NEXT (dB)	ELFEXT (dB)	PSELFEXT (dB)
1	3.0	65.0	19.1	62.0	64.2	61.2
4	3.5	64.1	21.0	61.8	52.1	49.1
8	5.0	59.4	21.0	57.0	46.1	43.1
10	5.5	57.8	21.0	55.5	44.2	41.2
16	7.0	54.6	20.0	52.2	40.1	37.1
20	7.9	53.1	19.5	50.7	38.2	35.2
25	8.9	51.5	19.0	49.1	36.2	33.2
31.25	10.0	50.0	18.5	47.5	34.3	31.3
62.5	14.4	45.1	16.0	42.7	28.3	25.3
100	18.6	41.8	14.0	39.3	24.2	21.2
200	27.4	36.9	11.0	34.3	18.2	15.2
250	31.1	35.3	10.0	32.7	16.2	13.2

Cat6A U/UTP LAN Cable

BC 23 AWG LSZH CPR Eca

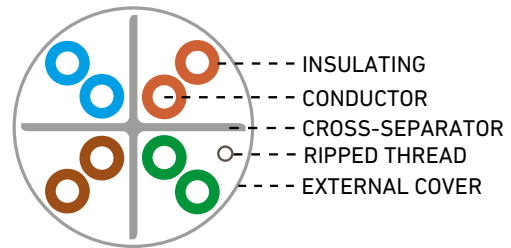
Reference		CLU6A
Code		390003
Construction	Screening	U/UTP
	Conductor material	BC, copper
	Diameter	23 AWG (0.56±0.02mm)
	Insulation material	HDPE
	Nominal thickness	0.21mm
	Diameter	1.0±0.05mm
	Outside cover material	LSZH
	Outside diameter	6.3±0.5mm
	Color	White RAL9010
	Cross-pair separator	Yes
	Rip cord	Yes
Electrical characteristics	Frequency range	1-500MHz
	Impedance	93.8Ω/Km
	Mutual capacitance	≤56nF/Km
	Maximum unbalanced capacity	≤330pF/100m
	Maximum unbalanced DC resistance	≤5%
General	Minimum bend radius	65mm
	Storage Temp Range	-15°C - 75°C
	Temp range installation	-15°C - 75°C
	Work temperature	0°C - 60°C
	Maximum pulling force	25lbs
	CPR	Eca
Packaging		Reel in box of 305m
Weight	Kg	15 / 13
Color code	Pair1	Blue - white/blue
	Pair2	Orange - white/orange
	Pair3	Green - White/green
	Pair4	Brown - white/brown

Freq. (MHz)	Att. Max. (dB/100m)	NEXT (dB)	RL (dB)	PS-NEXT (dB)	ELFEXT (dB)	PSELFEXT (dB)
1	3.0	65.0	19.1	62.0	64.2	61.2
4	3.5	64.1	21.0	61.8	52.1	49.1
8	5.0	59.4	21.0	57.0	46.1	43.1
10	5.5	57.8	21.0	55.5	44.2	41.2
16	7.0	54.6	20.0	52.2	40.1	37.1
20	7.8	53.1	19.5	50.7	38.2	35.2
25	8.8	51.5	19.0	49.1	36.2	33.2
31.25	9.8	50.0	18.5	47.5	34.3	31.3
62.5	14.0	45.1	16.0	42.7	28.3	25.3
100	18.0	41.8	14.0	39.3	24.2	21.2
200	26.1	36.9	11.0	34.3	18.2	15.2
250	29.5	35.3	10.0	32.7	16.2	13.2
350	35.6	31.8	8.6	29.1	13.3	10.3
500	43.8	26.7	8.0	23.8	10.2	7.2

CLU 6 A

- 4 twisted pairs with cross
- Plastic spool for easy pulling
- 23 AWG
- CPR Eca LSZH

CPR
Eca



CLU 6 A

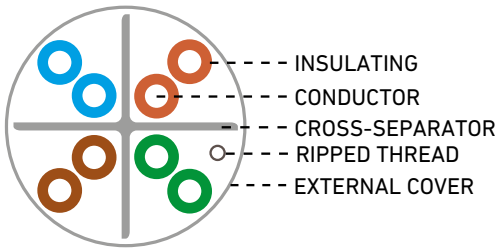
Cat6A U/UTP LAN Cable BC

23 AWG LSZH CPR B2ca

CLU 6AB

- 4 twisted pairs with cross
- Plastic spool for easy pulling
- 23 AWG
- CPR B2ca s1 a1 LSZH

**CPR
Bca**



CLU 6 AB

Reference		CLU 6AB
Code		390004
Construction	Screening	U/UTP
	Conductor material	BC, Copper
	Diameter	23 AWG (0.56±0.02mm)
	Insulation material	HDPE
	Nominal thickness	0.21mm
	Diameter	1.0±0.05mm
	Outside cover material	LSZH
	Outside diameter	6.3±0.5mm
	Color	Blanco RAL9010
	Cross-pair separator	Yes
Rip cord	Yes	
Electrical characteristics	Frequency range	1-500MHz
	Impedance	93.8Ω/Km
	Mutual capacitance	≤56nF/Km
	Maximum unbalanced capacity	≤330pF/100m
	Maximum unbalanced DC resistance	≤5%
General	Minimum bend radius	65mm
	Storage Temp Range	-15°C ~ 75°C
	Temp range installation	-15°C ~ 75°C
	Work temperature	0°C ~ 60°C
	Maximum pulling force	25lbs
	CPR	B2ca s1 d2 a1
Packaging		Reel in box of 305m
Weight	Kg	18,7 / 16,5
Color code	Pair1	Blue - white/blue
	Pair2	Orange - white/orange
	Pair3	Green - White/green
	Pair4	Brown - white/brown

Freq. (MHz)	Att. Max. (dB/100m)	NEXT (dB)	RL (dB)	PS-NEXT (dB)	ELFEXT (dB)	PSELFEXT (dB)
1	3.0	65.0	19.1	62.0	64.2	61.2
4	3.5	64.1	21.0	61.8	52.1	49.1
8	5.0	59.4	21.0	57.0	46.1	43.1
10	5.5	57.8	21.0	55.5	44.2	41.2
16	7.0	54.6	20.0	52.2	40.1	37.1
20	7.8	53.1	19.5	50.7	38.2	35.2
25	8.8	51.5	19.0	49.1	36.2	33.2
31.25	9.8	50.0	18.5	47.5	34.3	31.3
62.5	14.0	45.1	16.0	42.7	28.3	25.3
100	18.0	41.8	14.0	39.3	24.2	21.2
200	26.1	36.9	11.0	34.3	18.2	15.2
250	29.5	35.3	10.0	32.7	16.2	13.2
350	35.6	31.8	8.6	29.1	13.3	10.3
500	43.8	26.7	8.0	23.8	10.2	7.2

Rosettes and data connectors / Racks / Tools

ROSETTES AND DATA CONNECTORS

393021	R C6	Data terminal rosette box with dust cap. Keystone not included.
393001	KJ C6	Keystone jack / Cat6 UTP female connector
393005	KJ C6A	Cat6A UTP keystone jack / female connector
393007	KJ C6A-TL	Tool-less Cat6A keystone jack UTP female connector
393006	KJ C6A-FTL	Keystone jack / conector hembra Cat6A FTP sin herramienta
393003	RJ45 C6	Cat6 UTP RJ45 male connector
393008	RJ45U C6A	RJ45 Cat6A UTP fast male connector
393009	RJ45F C6A	RJ45 Cat6A Fast FTP Male Connector
393004	C RJ45	White cap for male RJ45 connector
393010	C RJ45 Y	Yellow cap for male RJ45 connector
393013	C RJ45 R	Red cap for male RJ45 connector
393014	C RJ45 B	Blue cap for male RJ45 connector
393015	C RJ45 G	Grey cap for male RJ45 connector

RACKS

361001	B 2U	Wall frame 19" 2U - 300 mm depth
361002	B 3U	Wall frame 19" 3U - 300 mm depth
396005	RB 419 300	Rack cabinet de 19" 4U 300mm depth
396001	R6 19 450	Rack cabinet 19" 6U 450mm depth
396002	R9 19 450	Rack cabinet 19" 9U 450mm depth
392005	PP 24 6 C	24 Cat6 ports patch panel for 19" rack
392001	PP 24 S	24 ports empty patch panel for 19" rack (keystone not included)
361015	BER	Sockets base for 19" rack
361016	BF 1U-300	Fixed 19" rack tray - 1U. Depth 300mm. For racks depth 450mm
361017	BF2U-300	Fixed 19" rack tray - 2U. Depth 300mm. For racks depth 450mm
397003	GC 19	Wires guide for 19" rack 1U
397004	PPC 19	Lead-through for 19" rack 1U
397001	PC 1 19	Blind panel 1U rack 19"
397002	PC 2 19	Blind panel 2U rack 19"

TOOLS

394003	HCC RJ45	Tool for fast male RJ45 connectors
394001	H KJ	KJC6 keystone jack tool
394002	H RJ45	Tool for RJ45 connector C6



R6 19 450



PP 24 6C



KJ C6A-TL
KJ C6A-FTL



KJ C6A



CRJ45
CRJ45Y
CRJ45R
CRJ45B
CRJ45G



HCC RJ45

TECHNICAL
CERTIFICATION
TEST



Cable ID: CLU 5 CCA

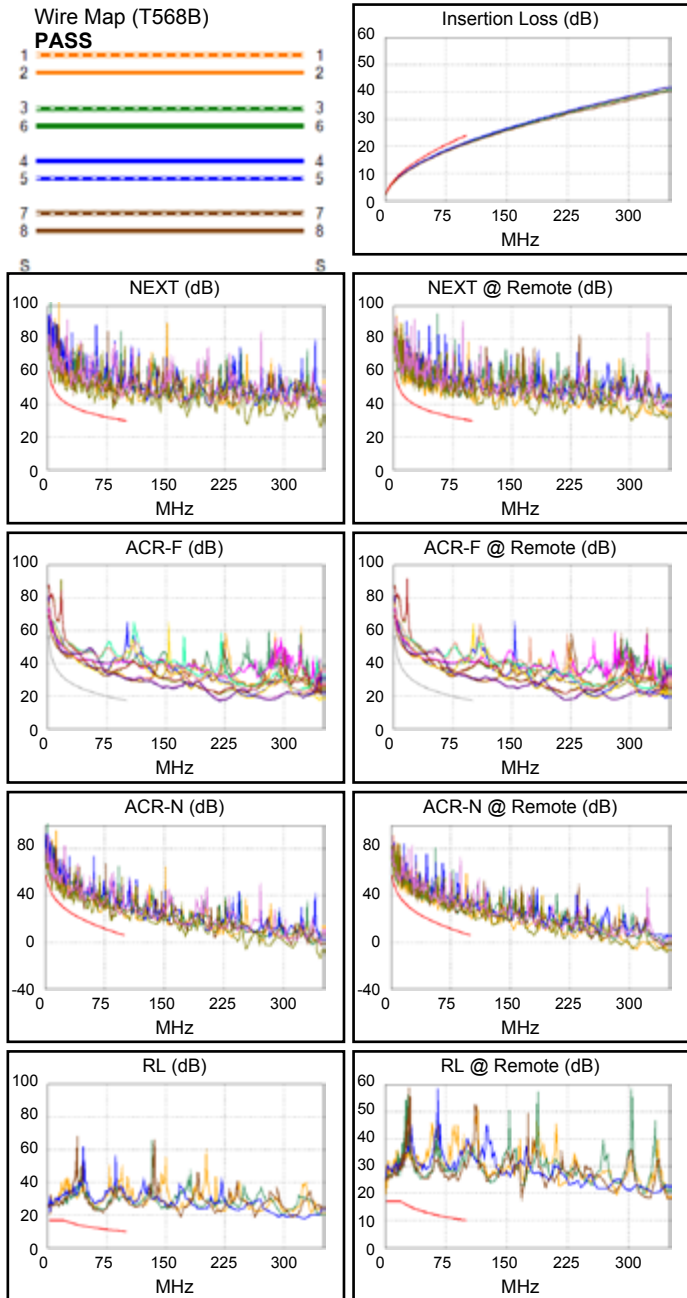
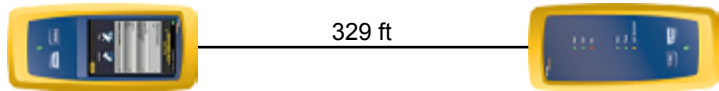
Date / Time: 06/19/2019 08:10:59 AM
 Headroom 5.0 dB (NEXT 36-78)
 Test Limit: TIA Cat 5e Channel
 Cable Type: Cat 5e U/UTP
 NVP: 69.0%

Software Version: V6.0 Build 6
 Limits Version: V7.0

Test Summary: PASS

Model: DSX-5000
 Main S/N: 2405257
 Remote S/N: 2420489
 Main Adapter: DSX-CHA004
 Remote Adapter: DSX-CHA004

Length (ft), Limit 328	[Pair 12]	200
Prop. Delay (ns), Limit 555	[Pair 45]	344
Delay Skew (ns), Limit 50	[Pair 45]	5
Resistance (ohms)	[Pair 12]	34.7
Insertion Loss Margin (dB)	[Pair 45]	2.4
Frequency (MHz)	[Pair 45]	100.0
Limit (dB)	[Pair 45]	24.0



Worst Case Margin Worst Case Value

PASS	MAIN	SR	MAIN	SR
Worst Pair	36-78	12-36	36-78	12-36
NEXT (dB)	5.0	6.8	6.2	12.7
Freq. (MHz)	8.6	12.9	83.5	97.5
Limit (dB)	48.1	45.2	31.4	30.3
Worst Pair	36	36	36	36
PS NEXT (dB)	6.9	8.5	7.4	13.1
Freq. (MHz)	8.5	13.0	83.8	93.0
Limit (dB)	45.2	42.1	28.4	27.6

PASS	MAIN	SR	MAIN	SR
Worst Pair	12-36	36-12	36-12	78-36
ACR-F (dB)	12.0	11.7	13.1	13.3
Freq. (MHz)	72.5	72.5	100.0	100.0
Limit (dB)	20.2	20.2	17.4	17.4
Worst Pair	36	12	36	36
PS ACR-F (dB)	11.9	12.2	13.1	12.9
Freq. (MHz)	76.3	72.5	100.0	100.0
Limit (dB)	16.8	17.2	14.4	14.4

N/A	MAIN	SR	MAIN	SR
Worst Pair	36-78	12-36	36-78	12-36
ACR-N (dB)	5.6	7.4	8.8	15.6
Freq. (MHz)	8.6	12.9	83.5	98.0
Limit (dB)	41.5	37.1	9.7	6.5
Worst Pair	36	36	36	12
PS ACR-N (dB)	7.4	9.1	9.9	16.0
Freq. (MHz)	8.5	13.0	84.0	98.3
Limit (dB)	38.6	34.0	6.6	3.4

PASS	MAIN	SR	MAIN	SR
Worst Pair	12	78	78	78
RL (dB)	6.3	6.5	9.7	6.5
Freq. (MHz)	2.4	2.4	70.0	2.4
Limit (dB)	17.0	17.0	11.6	17.0

Compliant Network Standards:
 10BASE-T 100BASE-TX 100BASE-T4
 1000BASE-T ATM-25 ATM-51
 ATM-155 100VG-AnyLan TR-4
 TR-16 Active TR-16 Passive

CLU 5 CU



Cable ID: CLU 5 CU

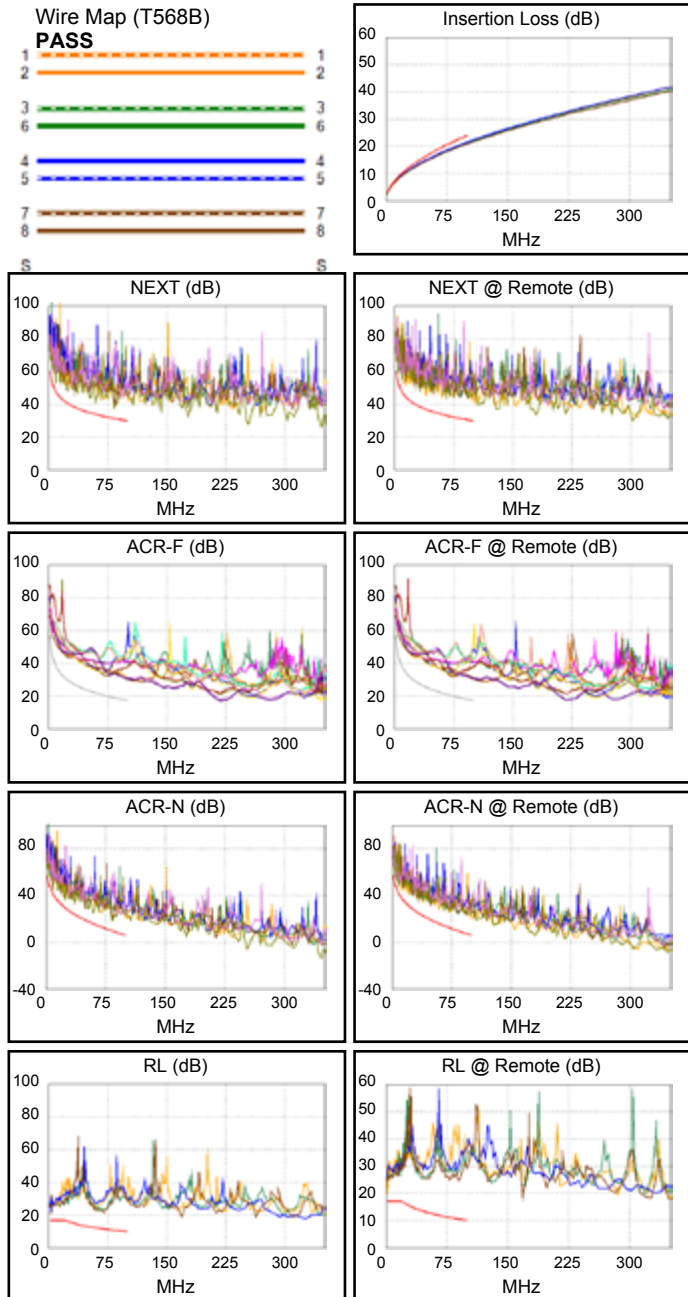
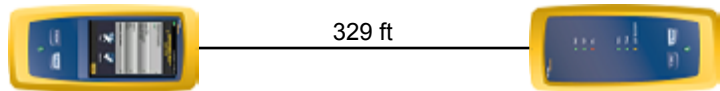
Date / Time: 06/19/2019 08:10:59 AM
 Headroom **5.0 dB (NEXT 36-78)**
 Test Limit: **TIA Cat 5e Channel**
 Cable Type: Cat 5e U/UTP
 NVP: 69.0%

Software Version: V6.0 Build 6
 Limits Version: V7.0

Test Summary: PASS

Model: DSX-5000
 Main S/N: 2405257
 Remote S/N: 2420489
 Main Adapter: DSX-CHA004
 Remote Adapter: DSX-CHA004

Length (ft), Limit 328	[Pair 12]	329
Prop. Delay (ns), Limit 555	[Pair 45]	501
Delay Skew (ns), Limit 50	[Pair 45]	9
Resistance (ohms)	[Pair 12]	22.31
Insertion Loss Margin (dB)	[Pair 45]	2.4
Frequency (MHz)	[Pair 45]	100.0
Limit (dB)	[Pair 45]	24.0



Worst Case Margin Worst Case Value

PASS	MAIN	SR	MAIN	SR
Worst Pair	36-78	12-36	36-78	12-36
NEXT (dB)	5.0	6.8	6.2	12.7
Freq. (MHz)	8.6	12.9	83.5	97.5
Limit (dB)	48.1	45.2	31.4	30.3
Worst Pair	36	36	36	36
PS NEXT (dB)	6.9	8.5	7.4	13.1
Freq. (MHz)	8.5	13.0	83.8	93.0
Limit (dB)	45.2	42.1	28.4	27.6

PASS	MAIN	SR	MAIN	SR
Worst Pair	12-36	36-12	36-12	78-36
ACR-F (dB)	12.0	11.7	13.1	13.3
Freq. (MHz)	72.5	72.5	100.0	100.0
Limit (dB)	20.2	20.2	17.4	17.4
Worst Pair	36	12	36	36
PS ACR-F (dB)	11.9	12.2	13.1	12.9
Freq. (MHz)	76.3	72.5	100.0	100.0
Limit (dB)	16.8	17.2	14.4	14.4

N/A	MAIN	SR	MAIN	SR
Worst Pair	36-78	12-36	36-78	12-36
ACR-N (dB)	5.6	7.4	8.8	15.6
Freq. (MHz)	8.6	12.9	83.5	98.0
Limit (dB)	41.5	37.1	9.7	6.5
Worst Pair	36	36	36	12
PS ACR-N (dB)	7.4	9.1	9.9	16.0
Freq. (MHz)	8.5	13.0	84.0	98.3
Limit (dB)	38.6	34.0	6.6	3.4

PASS	MAIN	SR	MAIN	SR
Worst Pair	12	78	78	78
RL (dB)	6.3	6.5	9.7	6.5
Freq. (MHz)	2.4	2.4	70.0	2.4
Limit (dB)	17.0	17.0	11.6	17.0

Compliant Network Standards:
 10BASE-T 100BASE-TX 100BASE-T4
 1000BASE-T ATM-25 ATM-51
 ATM-155 100VG-AnyLan TR-4
 TR-16 Active TR-16 Passive



Cable ID: CLU 5 CU-E

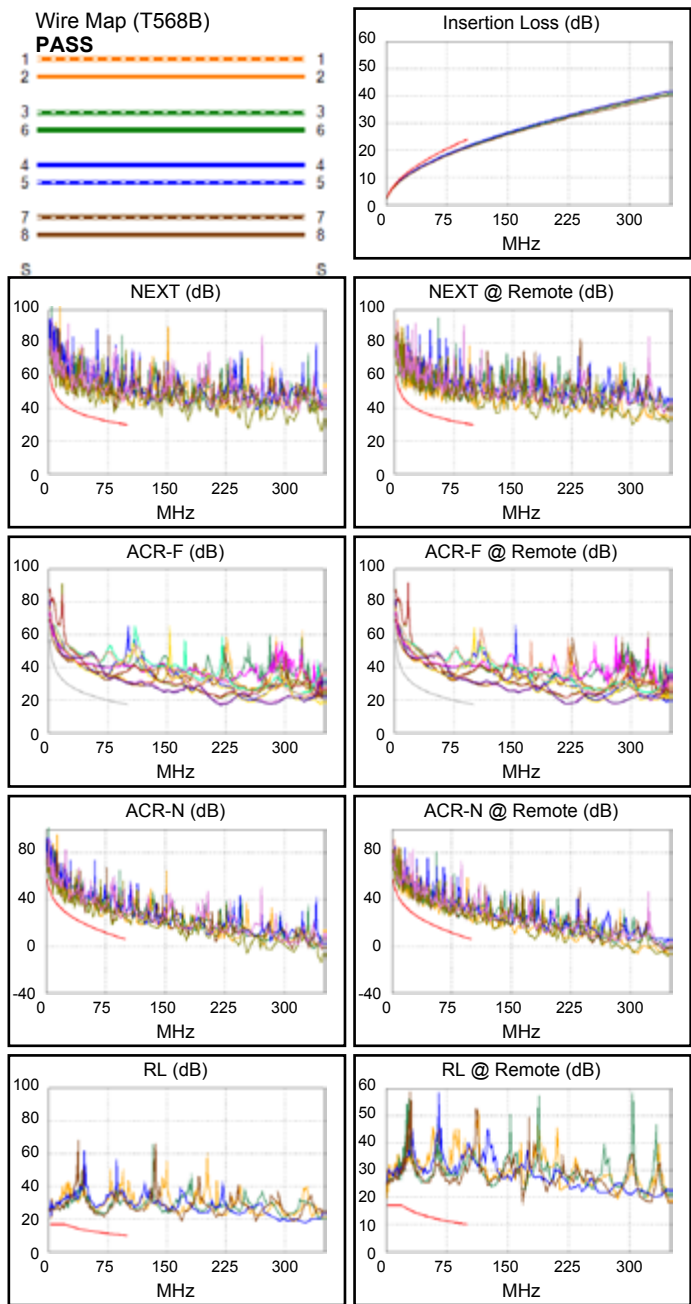
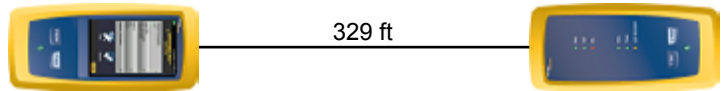
Date / Time: 06/19/2019 08:10:59 AM
 Headroom 5.0 dB (NEXT 36-78)
 Test Limit: TIA Cat 5e Channel
 Cable Type: Cat 5e U/UTP
 NVP: 69.0%

Software Version: V6.0 Build 6
 Limits Version: V7.0

Test Summary: PASS

Model: DSX-5000
 Main S/N: 2405257
 Remote S/N: 2420489
 Main Adapter: DSX-CHA004
 Remote Adapter: DSX-CHA004

Length (ft), Limit 328	[Pair 12]	329
Prop. Delay (ns), Limit 555	[Pair 45]	501
Delay Skew (ns), Limit 50	[Pair 45]	9
Resistance (ohms)	[Pair 12]	22.31
Insertion Loss Margin (dB)	[Pair 45]	2.4
Frequency (MHz)	[Pair 45]	100.0
Limit (dB)	[Pair 45]	24.0



Worst Case Margin Worst Case Value

PASS	MAIN	SR	MAIN	SR
Worst Pair	36-78	12-36	36-78	12-36
NEXT (dB)	5.0	6.8	6.2	12.7
Freq. (MHz)	8.6	12.9	83.5	97.5
Limit (dB)	48.1	45.2	31.4	30.3
Worst Pair	36	36	36	36
PS NEXT (dB)	6.9	8.5	7.4	13.1
Freq. (MHz)	8.5	13.0	83.8	93.0
Limit (dB)	45.2	42.1	28.4	27.6

PASS	MAIN	SR	MAIN	SR
Worst Pair	12-36	36-12	36-12	78-36
ACR-F (dB)	12.0	11.7	13.1	13.3
Freq. (MHz)	72.5	72.5	100.0	100.0
Limit (dB)	20.2	20.2	17.4	17.4
Worst Pair	36	12	36	36
PS ACR-F (dB)	11.9	12.2	13.1	12.9
Freq. (MHz)	76.3	72.5	100.0	100.0
Limit (dB)	16.8	17.2	14.4	14.4

N/A	MAIN	SR	MAIN	SR
Worst Pair	36-78	12-36	36-78	12-36
ACR-N (dB)	5.6	7.4	8.8	15.6
Freq. (MHz)	8.6	12.9	83.5	98.0
Limit (dB)	41.5	37.1	9.7	6.5
Worst Pair	36	36	36	12
PS ACR-N (dB)	7.4	9.1	9.9	16.0
Freq. (MHz)	8.5	13.0	84.0	98.3
Limit (dB)	38.6	34.0	6.6	3.4

PASS	MAIN	SR	MAIN	SR
Worst Pair	12	78	78	78
RL (dB)	6.3	6.5	9.7	6.5
Freq. (MHz)	2.4	2.4	70.0	2.4
Limit (dB)	17.0	17.0	11.6	17.0

Compliant Network Standards:
 10BASE-T 100BASE-TX 100BASE-T4
 1000BASE-T ATM-25 ATM-51
 ATM-155 100VG-AnyLan TR-4
 TR-16 Active TR-16 Passive

CLF5 CU-E



Cable ID: CLF 5CU-E

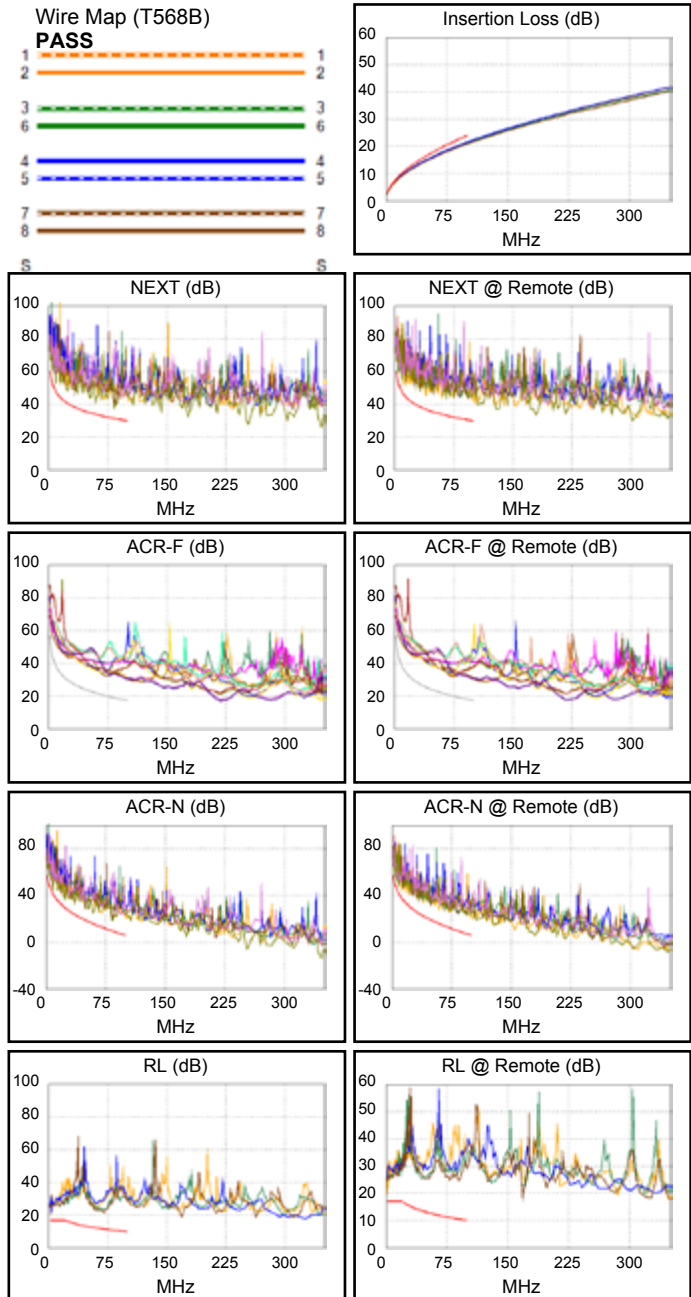
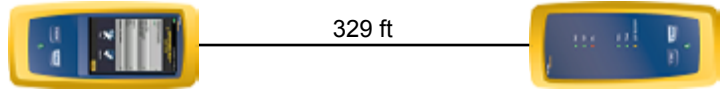
Date / Time: 06/19/2019 08:10:59 AM
 Headroom 5.0 dB (NEXT 36-78)
 Test Limit: TIA Cat 5e Channel
 Cable Type: Cat 5e U/UTP
 NVP: 69.0%

Software Version: V6.0 Build 6
 Limits Version: V7.0

Test Summary: PASS

Model: DSX-5000
 Main S/N: 2405257
 Remote S/N: 2420489
 Main Adapter: DSX-CHA004
 Remote Adapter: DSX-CHA004

Length (ft), Limit 328	[Pair 12]	329
Prop. Delay (ns), Limit 555	[Pair 45]	501
Delay Skew (ns), Limit 50	[Pair 45]	9
Resistance (ohms)	[Pair 12]	22.31
Insertion Loss Margin (dB)	[Pair 45]	2.4
Frequency (MHz)	[Pair 45]	100.0
Limit (dB)	[Pair 45]	24.0



Worst Case Margin Worst Case Value

PASS	MAIN	SR	MAIN	SR
Worst Pair	36-78	12-36	36-78	12-36
NEXT (dB)	5.0	6.8	6.2	12.7
Freq. (MHz)	8.6	12.9	83.5	97.5
Limit (dB)	48.1	45.2	31.4	30.3
Worst Pair	36	36	36	36
PS NEXT (dB)	6.9	8.5	7.4	13.1
Freq. (MHz)	8.5	13.0	83.8	93.0
Limit (dB)	45.2	42.1	28.4	27.6

PASS	MAIN	SR	MAIN	SR
Worst Pair	12-36	36-12	36-12	78-36
ACR-F (dB)	12.0	11.7	13.1	13.3
Freq. (MHz)	72.5	72.5	100.0	100.0
Limit (dB)	20.2	20.2	17.4	17.4
Worst Pair	36	12	36	36
PS ACR-F (dB)	11.9	12.2	13.1	12.9
Freq. (MHz)	76.3	72.5	100.0	100.0
Limit (dB)	16.8	17.2	14.4	14.4

N/A	MAIN	SR	MAIN	SR
Worst Pair	36-78	12-36	36-78	12-36
ACR-N (dB)	5.6	7.4	8.8	15.6
Freq. (MHz)	8.6	12.9	83.5	98.0
Limit (dB)	41.5	37.1	9.7	6.5
Worst Pair	36	36	36	12
PS ACR-N (dB)	7.4	9.1	9.9	16.0
Freq. (MHz)	8.5	13.0	84.0	98.3
Limit (dB)	38.6	34.0	6.6	3.4

PASS	MAIN	SR	MAIN	SR
Worst Pair	12	78	78	78
RL (dB)	6.3	6.5	9.7	6.5
Freq. (MHz)	2.4	2.4	70.0	2.4
Limit (dB)	17.0	17.0	11.6	17.0

Compliant Network Standards:
 10BASE-T 100BASE-TX 100BASE-T4
 1000BASE-T ATM-25 ATM-51
 ATM-155 100VG-AnyLan TR-4
 TR-16 Active TR-16 Passive



Cable ID: UTP CAT6 CLU 6 CCA

Date / Time: 05/20/2019 08:45:32 AM

Headroom 2,2dB (NEXT 45-78)

Test Limit: TIA Cat 6 Perm. Link Cable

Type: Cat 6 U/UTP

NVP: 69.0%

Software Version: V5.1 Build 4

Limits Version: V6.1

Calibration Start Date:

Test Summary: PASS

Model: DSX-5000

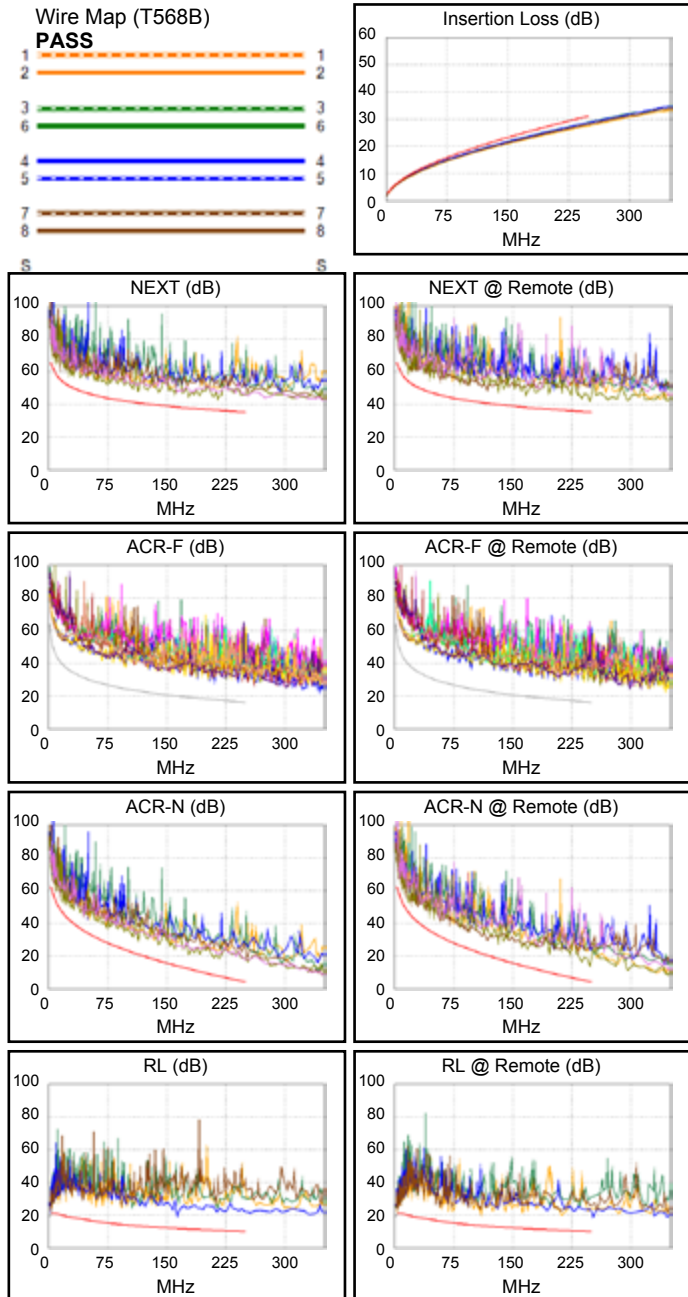
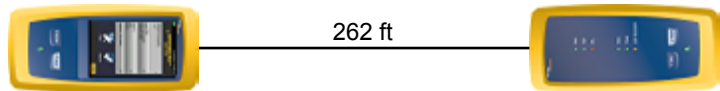
Main S/N: 2405257

Remote S/N: 2420489

Main Adapter: DSX-PLA004

Remote Adapter: DSX-PLA004

Length (ft), Limit 295	[Pair 12]	230
Prop. Delay (ns), Limit 498	[Pair 45]	344
Delay Skew (ns), Limit 44	[Pair 45]	5
Resistance (ohms)	[Pair 12]	34,7
Insertion Loss Margin (dB)	[Pair 36]	2,3
Frequency (MHz)	[Pair 36]	100
Limit (dB)	[Pair 36]	24



Worst Case Margin Worst Case Value

PASS	MAIN	SR	MAIN	SR
Worst Pair	36-78	36-78	36-78	36-78
NEXT (dB)	6.4	6.1	6.6	6.7
Freq. (MHz)	178.0	17.5	214.5	248.0
Limit (dB)	37.8	54.0	36.4	35.4
Worst Pair	78	36	78	36
PS NEXT (dB)	7.5	7.8	7.8	8.4
Freq. (MHz)	44.3	132.0	214.5	248.0
Limit (dB)	45.1	37.3	33.8	32.8

PASS	MAIN	SR	MAIN	SR
Worst Pair	12-78	78-12	12-78	78-12
ACR-F (dB)	11.7	12.1	12.9	13.2
Freq. (MHz)	211.5	211.5	241.5	241.5
Limit (dB)	17.7	17.7	16.5	16.5
Worst Pair	78	36	78	36
PS ACR-F (dB)	12.9	13.7	12.9	13.7
Freq. (MHz)	211.5	226.0	211.5	226.0
Limit (dB)	14.7	14.1	14.7	14.1

N/A	MAIN	SR	MAIN	SR
Worst Pair	36-78	36-78	36-78	36-78
ACR-N (dB)	7.7	6.6	9.2	9.8
Freq. (MHz)	4.8	17.5	214.5	248.0
Limit (dB)	59.1	46.6	8.0	4.4
Worst Pair	78	78	78	36
PS ACR-N (dB)	8.3	8.4	12.8	10.8
Freq. (MHz)	44.3	17.5	243.5	248.0
Limit (dB)	33.1	44.2	2.3	1.8

PASS	MAIN	SR	MAIN	SR
Worst Pair	12	12	45	12
RL (dB)	5.0	4.4	8.0	8.3
Freq. (MHz)	3.9	3.9	163.5	213.0
Limit (dB)	21.0	21.0	11.9	10.7

Compliant Network Standards:
 10BASE-T 100BASE-TX 100BASE-T4
 1000BASE-T ATM-25 ATM-51
 ATM-155 100VG-AnyLan TR-4
 TR-16 Active TR-16 Passive

CLU 6 CU



Cable ID: UTP CAT6 CLU6CU

Date / Time: 05/20/2019 08:45:32 AM

Headroom 6.1 dB (NEXT 36-78)

Test Limit: TIA Cat 6 Perm. Link

Cable Type: Cat 6 U/UTP

NVP: 69.0%

Software Version: V5.1 Build 4

Limits Version: V6.1

Calibration Start Date:

Test Summary: PASS

Model: DSX-5000

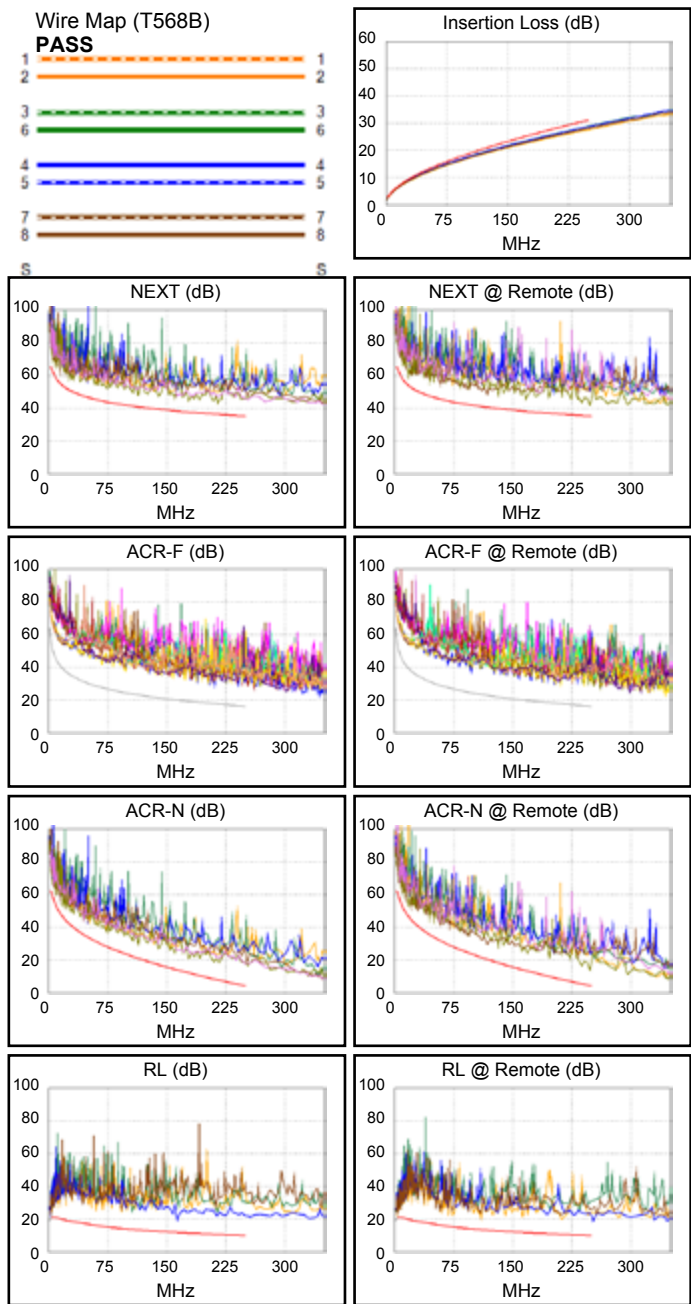
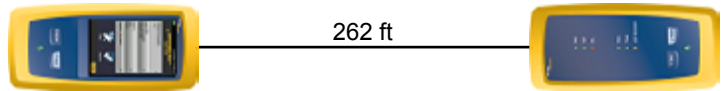
Main S/N: 2405257

Remote S/N: 2420489

Main Adapter: DSX-PLA004

Remote Adapter: DSX-PLA004

Length (ft), Limit 295	[Pair 12]	262
Prop. Delay (ns), Limit 498	[Pair 45]	431
Delay Skew (ns), Limit 44	[Pair 45]	21
Resistance (ohms)	[Pair 12]	15.67
Insertion Loss Margin (dB)	[Pair 36]	3.9
Frequency (MHz)	[Pair 36]	250.0
Limit (dB)	[Pair 36]	31.1



Worst Case Margin Worst Case Value

PASS	MAIN	SR	MAIN	SR
Worst Pair	36-78	36-78	36-78	36-78
NEXT (dB)	6.4	6.1	6.6	6.7
Freq. (MHz)	178.0	17.5	214.5	248.0
Limit (dB)	37.8	54.0	36.4	35.4
Worst Pair	78	36	78	36
PS NEXT (dB)	7.5	7.8	7.8	8.4
Freq. (MHz)	44.3	132.0	214.5	248.0
Limit (dB)	45.1	37.3	33.8	32.8

PASS	MAIN	SR	MAIN	SR
Worst Pair	12-78	78-12	12-78	78-12
ACR-F (dB)	11.7	12.1	12.9	13.2
Freq. (MHz)	211.5	211.5	241.5	241.5
Limit (dB)	17.7	17.7	16.5	16.5
Worst Pair	78	36	78	36
PS ACR-F (dB)	12.9	13.7	12.9	13.7
Freq. (MHz)	211.5	226.0	211.5	226.0
Limit (dB)	14.7	14.1	14.7	14.1

N/A	MAIN	SR	MAIN	SR
Worst Pair	36-78	36-78	36-78	36-78
ACR-N (dB)	7.7	6.6	9.2	9.8
Freq. (MHz)	4.8	17.5	214.5	248.0
Limit (dB)	59.1	46.6	8.0	4.4
Worst Pair	78	78	78	36
PS ACR-N (dB)	8.3	8.4	12.8	10.8
Freq. (MHz)	44.3	17.5	243.5	248.0
Limit (dB)	33.1	44.2	2.3	1.8

PASS	MAIN	SR	MAIN	SR
Worst Pair	12	12	45	12
RL (dB)	5.0	4.4	8.0	8.3
Freq. (MHz)	3.9	3.9	163.5	213.0
Limit (dB)	21.0	21.0	11.9	10.7

Compliant Network Standards:
 10BASE-T 100BASE-TX 100BASE-T4
 1000BASE-T ATM-25 ATM-51
 ATM-155 100VG-AnyLan TR-4
 TR-16 Active TR-16 Passive



Cable ID: UTP CAT6 CLU6CU

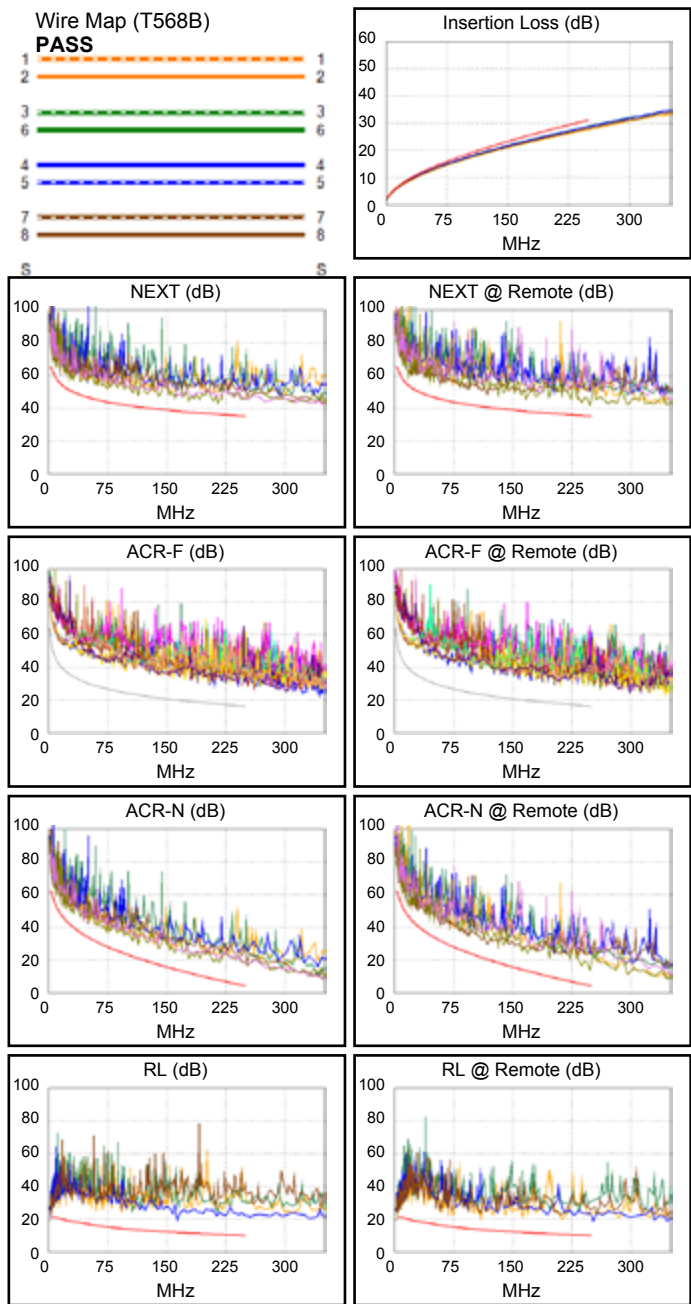
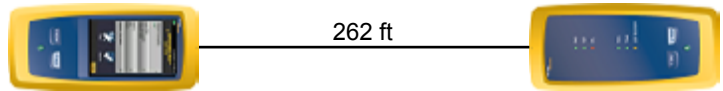
Date / Time: 05/20/2019 08:45:32 AM
 Headroom 6.1 dB (NEXT 36-78)
 Test Limit: TIA Cat 6 Perm. Link
 Cable Type: Cat 6 U/UTP
 NVP: 69.0%

Software Version: V5.1 Build 4
 Limits Version: V6.1
 Calibration Start Date:

Test Summary: PASS

Model: DSX-5000
 Main S/N: 2405257
 Remote S/N: 2420489
 Main Adapter: DSX-PLA004
 Remote Adapter: DSX-PLA004

Length (ft), Limit 295	[Pair 12]	262
Prop. Delay (ns), Limit 498	[Pair 45]	431
Delay Skew (ns), Limit 44	[Pair 45]	21
Resistance (ohms)	[Pair 12]	15.67
Insertion Loss Margin (dB)	[Pair 36]	3.9
Frequency (MHz)	[Pair 36]	250.0
Limit (dB)	[Pair 36]	31.1



Worst Case Margin Worst Case Value

PASS	MAIN	SR	MAIN	SR
Worst Pair	36-78	36-78	36-78	36-78
NEXT (dB)	6.4	6.1	6.6	6.7
Freq. (MHz)	178.0	17.5	214.5	248.0
Limit (dB)	37.8	54.0	36.4	35.4
Worst Pair	78	36	78	36
PS NEXT (dB)	7.5	7.8	7.8	8.4
Freq. (MHz)	44.3	132.0	214.5	248.0
Limit (dB)	45.1	37.3	33.8	32.8

PASS	MAIN	SR	MAIN	SR
Worst Pair	12-78	78-12	12-78	78-12
ACR-F (dB)	11.7	12.1	12.9	13.2
Freq. (MHz)	211.5	211.5	241.5	241.5
Limit (dB)	17.7	17.7	16.5	16.5
Worst Pair	78	36	78	36
PS ACR-F (dB)	12.9	13.7	12.9	13.7
Freq. (MHz)	211.5	226.0	211.5	226.0
Limit (dB)	14.7	14.1	14.7	14.1

N/A	MAIN	SR	MAIN	SR
Worst Pair	36-78	36-78	36-78	36-78
ACR-N (dB)	7.7	6.6	9.2	9.8
Freq. (MHz)	4.8	17.5	214.5	248.0
Limit (dB)	59.1	46.6	8.0	4.4
Worst Pair	78	78	78	36
PS ACR-N (dB)	8.3	8.4	12.8	10.8
Freq. (MHz)	44.3	17.5	243.5	248.0
Limit (dB)	33.1	44.2	2.3	1.8

PASS	MAIN	SR	MAIN	SR
Worst Pair	12	12	45	12
RL (dB)	5.0	4.4	8.0	8.3
Freq. (MHz)	3.9	3.9	163.5	213.0
Limit (dB)	21.0	21.0	11.9	10.7

Compliant Network Standards:
 10BASE-T 100BASE-TX 100BASE-T4
 1000BASE-T ATM-25 ATM-51
 ATM-155 100VG-AnyLan TR-4
 TR-16 Active TR-16 Passive

CLU 6 CU-E



Cable ID: CLU 6 CU-E

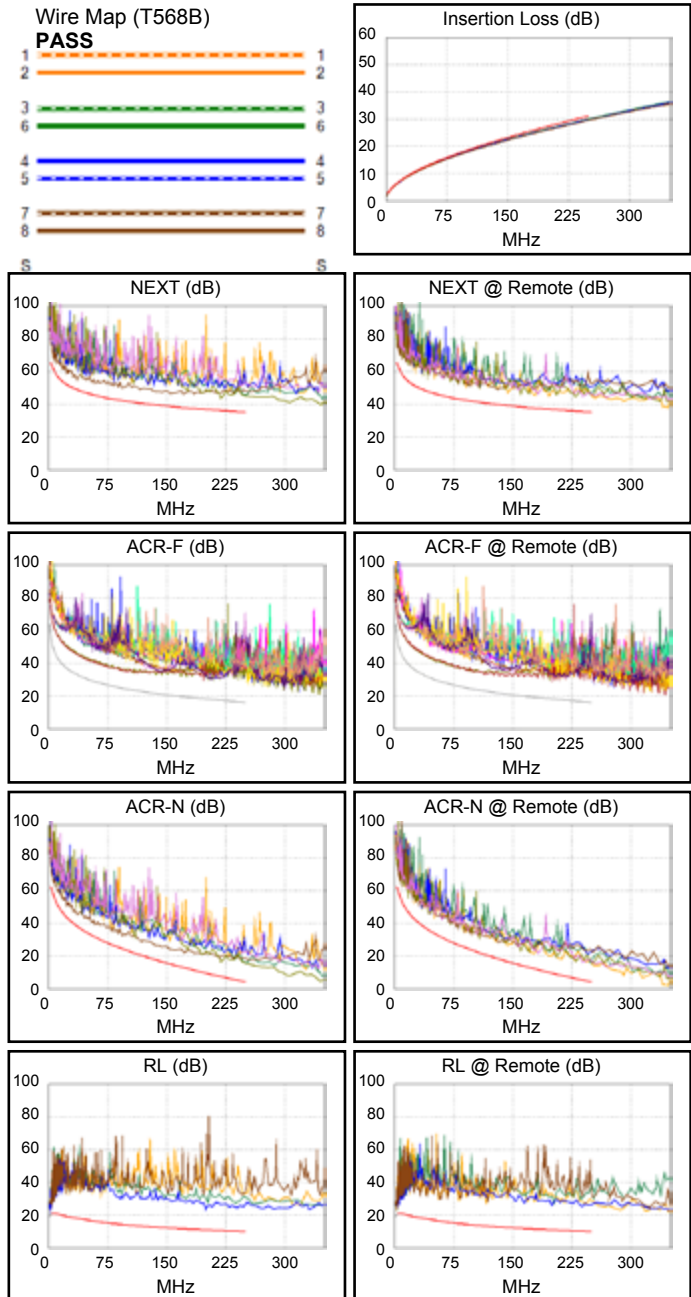
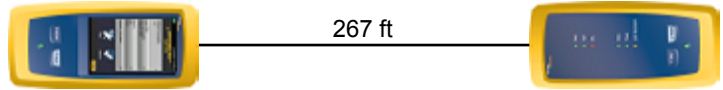
Date / Time: 06/21/2019 09:35:02 AM
 Headroom 6.1 dB (NEXT 36-45)
 Test Limit: TIA Cat 6 Perm. Link
 Cable Type: Cat 6 U/UTP
 NVP: 69.0%

Software Version: V6.0 Build 6
 Limits Version: V7.0

Test Summary: PASS

Model: DSX-5000
 Main S/N: 2405257
 Remote S/N: 2420489
 Main Adapter: DSX-PLA004
 Remote Adapter: DSX-PLA004

Length (ft), Limit 295	[Pair 78]	267
Prop. Delay (ns), Limit 498	[Pair 45]	459
Delay Skew (ns), Limit 44	[Pair 45]	21
Resistance (ohms)	[Pair 78]	14.49
Insertion Loss Margin (dB)	[Pair 36]	1.0
Frequency (MHz)	[Pair 36]	250.0
Limit (dB)	[Pair 36]	31.1



Worst Case Margin Worst Case Value

PASS	MAIN	SR	MAIN	SR
Worst Pair	36-45	36-78	36-78	12-36
NEXT (dB)	6.1	7.5	7.0	8.7
Freq. (MHz)	35.5	161.0	219.0	250.0
Limit (dB)	49.1	38.5	36.3	35.3
Worst Pair	36	36	36	36
PS NEXT (dB)	8.2	7.7	8.2	8.7
Freq. (MHz)	219.0	178.5	219.0	250.0
Limit (dB)	33.7	35.1	33.7	32.7

PASS	MAIN	SR	MAIN	SR
Worst Pair	36-45	45-36	12-78	78-12
ACR-F (dB)	10.3	10.1	13.7	13.5
Freq. (MHz)	114.5	114.0	250.0	250.0
Limit (dB)	23.0	23.1	16.2	16.2
Worst Pair	36	36	36	36
PS ACR-F (dB)	12.1	11.3	14.0	13.5
Freq. (MHz)	118.0	139.0	214.5	202.0
Limit (dB)	19.8	18.3	14.6	15.1

N/A	MAIN	SR	MAIN	SR
Worst Pair	36-45	12-36	36-78	12-36
ACR-N (dB)	6.4	8.3	10.0	9.7
Freq. (MHz)	35.5	143.5	248.5	250.0
Limit (dB)	38.4	16.6	4.4	4.2
Worst Pair	36	36	36	36
PS ACR-N (dB)	8.5	8.2	10.9	9.7
Freq. (MHz)	23.0	89.8	249.0	250.0
Limit (dB)	41.2	22.6	1.7	1.6

PASS	MAIN	SR	MAIN	SR
Worst Pair	12	45	45	45
RL (dB)	5.5	6.9	12.5	14.9
Freq. (MHz)	3.6	3.4	199.5	247.0
Limit (dB)	21.0	21.0	11.0	10.1

Compliant Network Standards:
 10BASE-T 100BASE-TX 100BASE-T4
 1000BASE-T ATM-25 ATM-51
 ATM-155 100VG-AnyLan TR-4
 TR-16 Active TR-16 Passive



Cable ID: CLU 6A

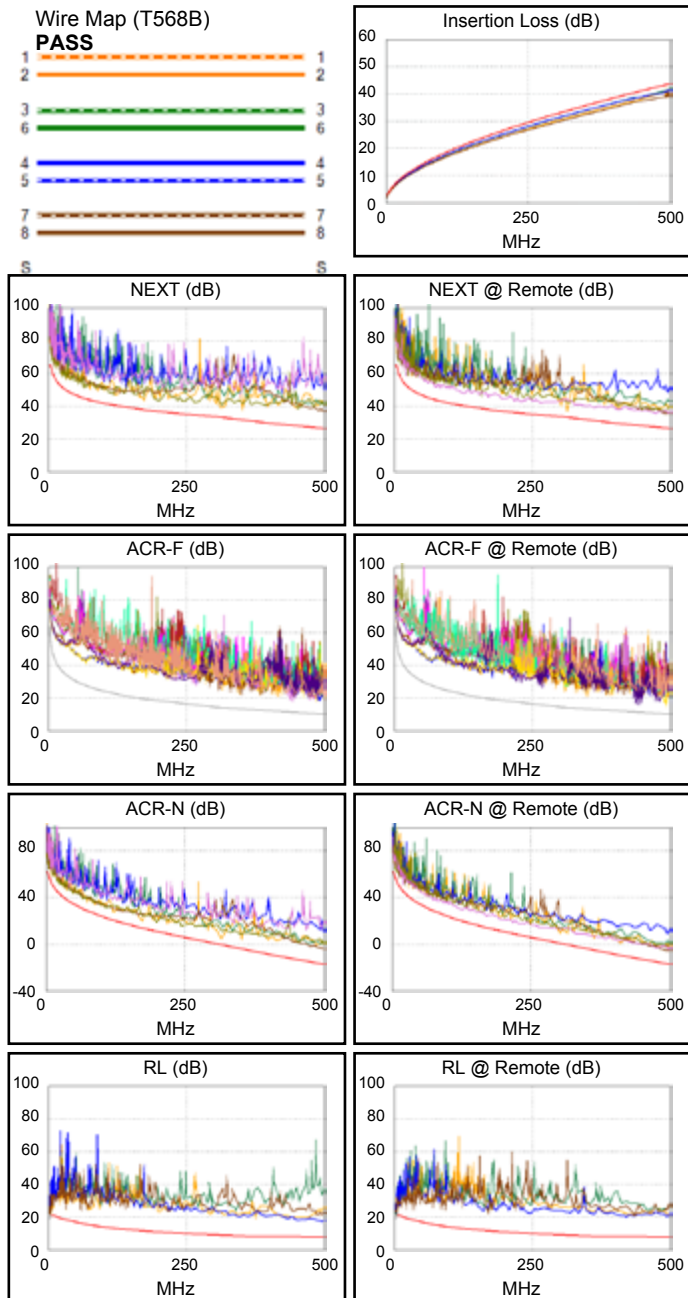
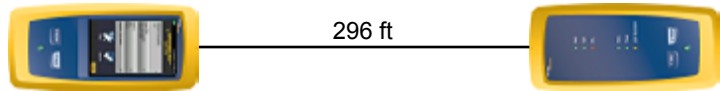
Date / Time: 06/21/2019 10:11:59 AM
 Headroom 3.2 dB (NEXT 12-36)
 Test Limit: TIA Cat 6A Perm. Link
 Cable Type: Cat 6A U/UTP
 NVP: 69.0%

Software Version: V6.0 Build 6
 Limits Version: V7.0

Test Summary: PASS

Model: DSX-5000
 Main S/N: 2405257
 Remote S/N: 2420489
 Main Adapter: DSX-PLA004
 Remote Adapter: DSX-PLA004

Length (ft), Limit 295	[Pair 78]	296
Prop. Delay (ns), Limit 498	[Pair 45]	421
Delay Skew (ns), Limit 44	[Pair 45]	15
Resistance (ohms)	[Pair 78]	14.67
Insertion Loss Margin (dB)	[Pair 36]	2.0
Frequency (MHz)	[Pair 36]	499.0
Limit (dB)	[Pair 36]	43.7



Worst Case Margin Worst Case Value

PASS	MAIN	SR	MAIN	SR
Worst Pair	12-36	12-36	12-36	45-78
NEXT (dB)	3.2	4.5	3.2	8.1
Freq. (MHz)	314.0	313.0	314.0	476.0
Limit (dB)	33.3	33.4	33.3	27.4
Worst Pair	36	36	36	36
PS NEXT (dB)	4.5	5.8	9.2	8.6
Freq. (MHz)	314.0	313.0	452.0	492.0
Limit (dB)	30.7	30.8	25.3	24.0

PASS	MAIN	SR	MAIN	SR
Worst Pair	12-78	78-12	12-78	78-12
ACR-F (dB)	8.3	6.5	8.3	6.5
Freq. (MHz)	491.0	491.0	491.0	491.0
Limit (dB)	10.4	10.4	10.4	10.4
Worst Pair	78	12	78	12
PS ACR-F (dB)	10.6	8.9	11.1	8.9
Freq. (MHz)	445.0	491.0	491.0	491.0
Limit (dB)	8.2	7.4	7.4	7.4

N/A	MAIN	SR	MAIN	SR
Worst Pair	12-36	12-36	36-45	36-45
ACR-N (dB)	4.9	6.2	12.6	11.3
Freq. (MHz)	314.0	313.0	498.0	498.0
Limit (dB)	-0.2	-0.1	-16.9	-16.9
Worst Pair	36	36	36	45
PS ACR-N (dB)	6.2	7.5	13.0	11.0
Freq. (MHz)	314.0	313.0	499.0	498.0
Limit (dB)	-2.8	-2.7	-19.9	-19.8

PASS	MAIN	SR	MAIN	SR
Worst Pair	12	78	45	45
RL (dB)	4.6	3.7	9.4	11.6
Freq. (MHz)	4.0	4.0	496.0	420.0
Limit (dB)	21.0	21.0	8.0	8.0

Compliant Network Standards:
 10BASE-T 100BASE-TX 100BASE-T4
 1000BASE-T 10GBASE-T ATM-25
 ATM-51 ATM-155 100VG-AnyLan
 TR-4 TR-16 Active TR-16 Passive

CLU 6AB



Cable ID: CLU 6A B

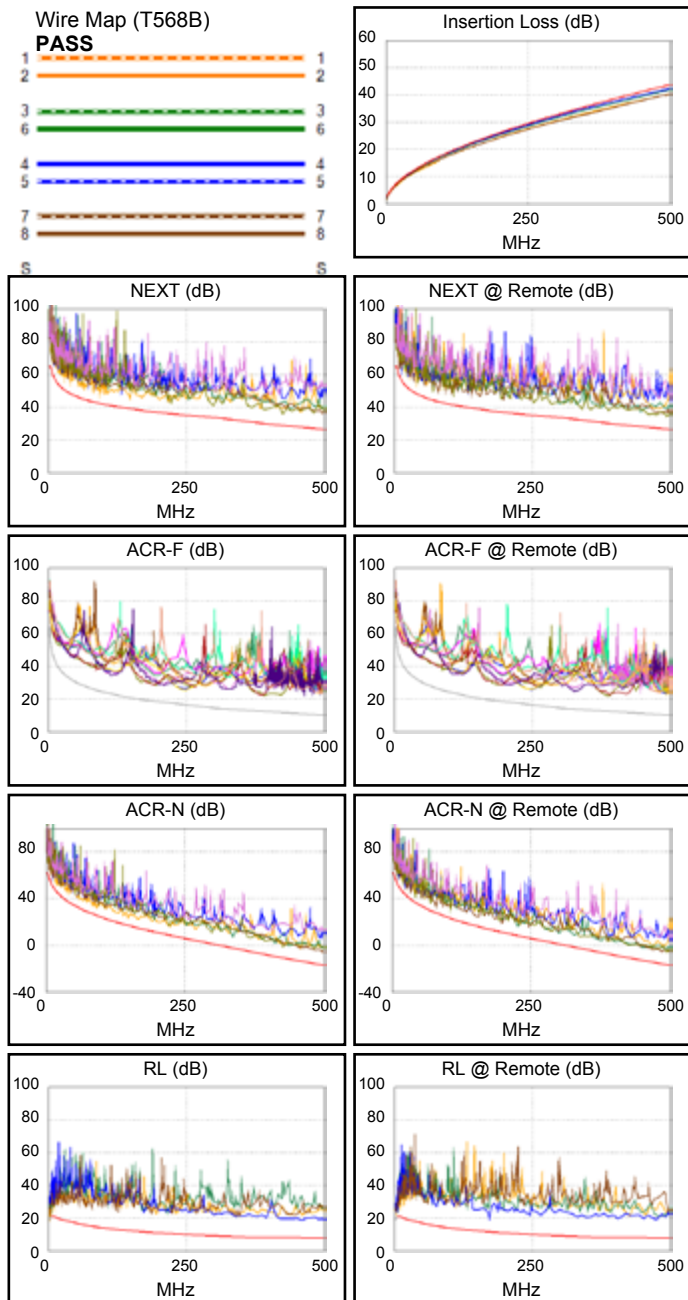
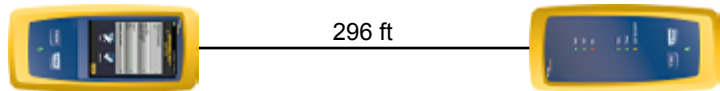
Date / Time: 06/20/2019 08:44:48 AM
 Headroom 5.1 dB (NEXT 36-45)
 Test Limit: TIA Cat 6A Perm. Link
 Cable Type: Cat 6A U/UTP
 NVP: 69.0%

Software Version: V6.0 Build 6
 Limits Version: V7.0

Test Summary: PASS

Model: DSX-5000
 Main S/N: 2405257
 Remote S/N: 2420489
 Main Adapter: DSX-PLA004
 Remote Adapter: DSX-PLA004

Length (ft), Limit 295	[Pair 78]	296
Prop. Delay (ns), Limit 498	[Pair 45]	449
Delay Skew (ns), Limit 44	[Pair 45]	16
Resistance (ohms)	[Pair 36]	14.33
Insertion Loss Margin (dB)	[Pair 45]	1.2
Frequency (MHz)	[Pair 45]	498.0
Limit (dB)	[Pair 45]	43.6



Worst Case Margin Worst Case Value

PASS	MAIN	SR	MAIN	SR
Worst Pair	12-36	36-45	36-78	36-78
NEXT (dB)	5.9	5.1	6.1	7.5
Freq. (MHz)	147.5	79.3	429.0	494.0
Limit (dB)	39.1	43.5	28.9	26.8
Worst Pair	36	78	36	36
PS NEXT (dB)	5.8	6.4	9.2	8.3
Freq. (MHz)	223.0	69.0	500.0	494.0
Limit (dB)	33.5	41.9	23.8	23.9

PASS	MAIN	SR	MAIN	SR
Worst Pair	78-12	12-78	36-45	36-45
ACR-F (dB)	9.2	9.5	9.8	9.6
Freq. (MHz)	248.0	247.5	390.0	393.0
Limit (dB)	16.3	16.3	12.4	12.3
Worst Pair	36	36	36	78
PS ACR-F (dB)	10.6	10.9	10.6	13.0
Freq. (MHz)	386.0	196.5	386.0	488.0
Limit (dB)	9.5	15.3	9.5	7.4

N/A	MAIN	SR	MAIN	SR
Worst Pair	12-36	36-45	36-45	36-45
ACR-N (dB)	6.4	5.2	11.3	9.8
Freq. (MHz)	147.5	79.3	499.0	487.0
Limit (dB)	17.0	27.6	-17.0	-16.1
Worst Pair	36	36	36	36
PS ACR-N (dB)	6.5	6.8	11.1	10.4
Freq. (MHz)	223.0	69.0	500.0	497.0
Limit (dB)	5.8	27.2	-20.0	-19.7

PASS	MAIN	SR	MAIN	SR
Worst Pair	12	12	45	45
RL (dB)	4.4	5.1	10.7	11.2
Freq. (MHz)	3.8	3.8	460.0	476.0
Limit (dB)	21.0	21.0	8.0	8.0

Compliant Network Standards:
 10BASE-T 100BASE-TX 100BASE-T4
 1000BASE-T 10GBASE-T ATM-25
 ATM-51 ATM-155 100VG-AnyLan
 TR-4 TR-16 Active TR-16 Passive



EKSELANS BY ITS

EKSELANS by ITS
ITS Partner O.B.S. S.L

Av. Cerdanyola 79-81 Local C
08172 Sant Cugat del Vallès
Barcelona (España)
Tel: +34 93 583 95 43
info@ek.plus
www.ek.plus