



EKSELANS BY ITS

# GAMA DE CABLEADO ESTRUCTURADO



ENTRA EN EL MUNDO EK



# Cable LAN Cat5e U/UTP

## PVC CPR Eca

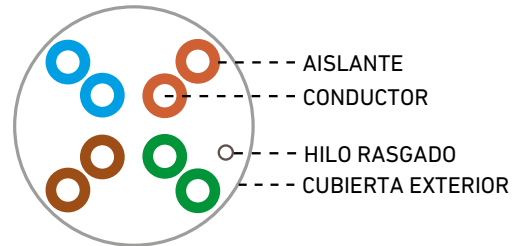
### CLU 5 CCA

Referencia	CLU5CCA	
Código	390009	
Construcción	Apantallamiento	U/UTP
	Material del conductor	CCA
	Diámetro del conductor	24 AWG (0.50±0.005mm)
	Material aislamiento	HDPE
	Diámetro nominal	0.90±0.05mm
	Material cubierta exterior	PVC
	Diámetro exterior	5.0±0.3mm
	Color	Blanco RAL9010
	Cruceta	No
	Hilo de rasgado	Si
Características eléctricas	Rango de frecuencias	1-100MHz
	Impedancia	100±15Ω
	Capacidad nominal mutua	≤56nF/Km
	Resistencia máxima DC no balanceada	≤9.5Ω/100m
General	Radio de curvatura mínimo	30mm
	Rango Temp. almacenamiento	-20°C - 80°C
	Rango Temp. instalación	-20°C - 80°C
	Temperatura de trabajo	-20°C - 80°C
	Máxima fuerza de tracción	100N
	CPR	Eca
Embalaje	Carrete en caja de 305m	
Peso	Kg (Neto / Bruto)	6 / 8
Código de colores	Par1	Azul - blanco/azul
	Par2	Naranja - blanco/naranja
	Par3	Verde - blanco/verde
	Par4	Marrón - blanco/marrón

Frecuencia (MHZ)	Att. Máx. (dB/100m)	NEXT (dB)	RL (dB)	PS-NEXT (dB)	ELFEXT (dB)	PSELFEXT (dB)
1	2.0	65.3	20.0	62.3	63.8	60.8
4	4.1	56.3	23.0	53.3	51.8	48.8
8	5.8	51.8	24.5	48.8	45.7	42.7
10	6.5	50.3	25.0	47.3	43.8	40.8
16	8.2	47.2	25.0	44.4	39.7	36.7
20	9.3	45.8	25.0	42.8	37.8	34.8
25	10.4	44.3	24.3	41.3	35.8	32.8
31.25	11.7	42.9	23.6	39.9	33.9	30.9
62.5	17.0	38.4	21.5	35.4	27.9	24.9
100	22.0	35.3	20.1	32.3	23.8	20.8

- Cable 4 pares trenzados
- Carrete de plástico para fácil extracción
- 24 AWG
- CPR Eca

CPR  
Eca



--- CARRETE PLÁSTICO



CLU 5 CCA

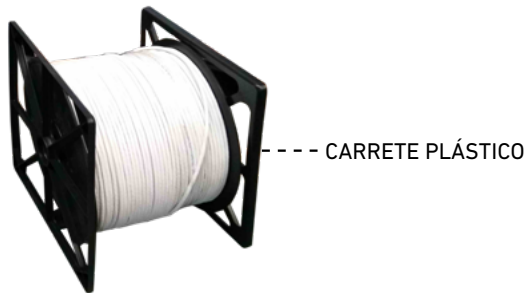
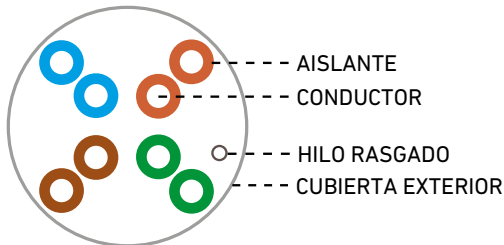
# Cable LAN Cat5e U/UTP

## PVC CPR Eca

### CLU 5 CU

- Cable 4 pares trenzados
- Carrete de plástico para fácil extracción
- 25 AWG
- CPR Eca

CPR  
Eca



CLU 5 CU

Referencia		CLU5CU
Código		390005
Construcción	Apantallamiento	U/UTP
	Material del conductor	BC, cobre
	Diámetro del conductor	25 AWG (0.45±0.01mm)
	Material aislamiento	HDPE
	Grosor nominal	0.195mm
	Diámetro	0.83±0.05mm
	Material cubierta exterior	PVC
	Grosor exterior	4.8±0.5mm
	Color	Blanco RAL9010
	Cruceta	No
Hilo de rasgado	Si	
Características eléctricas	Rango de frecuencias	1-100MHz
	Impedancia	120,0Ω/Km
	Capacidad nominal mutua	≤56nF/Km
	Capacidad máxima no balanceada	≤330pF/100m
	Resistencia máxima DC no balanceada	≤5%
General	Radio de curvatura mínimo	100mm
	Rango Temp. almacenamiento	-15°C ~ 75°C
	Rango Temp. instalación	-15°C ~ 75°C
	Temperatura de trabajo	0°C ~ 60°C
	Máxima fuerza de tracción	25lbs
	CPR	Eca
Embalaje		Carrete en caja de 305m
Peso	Kg	9,6 / 7,8

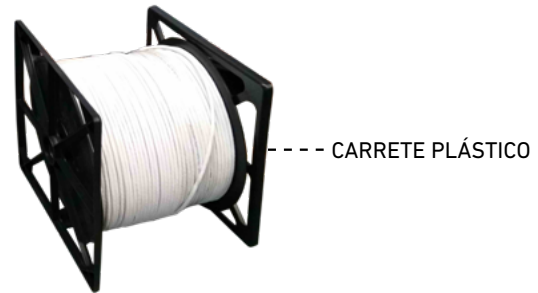
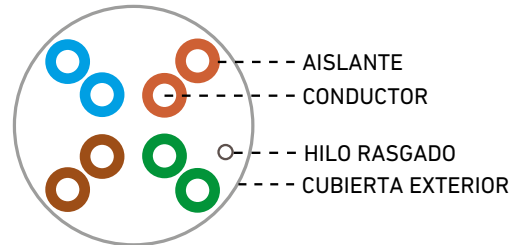
Frecuencia (MHZ)	Att. Máx. (dB/100m)	NEXT (dB)	RL (dB)	PS-NEXT (dB)	ELFEXT (dB)	PSELFEXT (dB)
1	3.0	60.0	17.0	57.0	57.4	54.4
4	4.5	53.5	17.0	50.5	45.4	42.4
8	6.3	54.8	17.0	45.63	39.3	36.3
10	7.1	47.0	17.0	44.0	37.4	34.4
16	9.1	43.6	17.0	40.6	33.3	30.3
20	10.2	42.0	17.0	39.0	31.4	28.4
25	11.4	40.3	16.0	37.3	29.4	26.4
31.25	12.9	38.7	15.1	35.7	27.5	24.5
62.5	18.6	33.6	12.1	30.6	21.5	18.5
100	24.0	30.1	10.0	27.1	17.4	14.4

# Cable LAN Cat5e U/UTP LSZH-UV CPR Eca

## CLU5 CU-E

- Cable 4 pares trenzados
- Carrete de plástico para fácil extracción
- 24 AWG
- CPR Eca
- Cubierta LSZH-UV blanco optimizada y adaptada para uso exterior

**CPR  
Eca**



Referencia	CLU5CU-E	
Código	390006	
Construcción	Apantallamiento	U/UTP
	Material del conductor	BC, cobre
	Diámetro del conductor	24 AWG (0.48±0.01mm)
	Material aislamiento	HDPE
	Grosor nominal	0.195mm
	Diámetro	0.87±0.05mm
	Material cubierta exterior	LSZH-UV
	Grosor exterior	5.0±0.5mm
	Color	Blanco RAL9010
	Cruceta	No
Hilo de rasgado	Si	
Características eléctricas	Rango de frecuencias	1-100MHz
	Impedancia	120.0Ω/Km
	Capacidad nominal mutua	≤5nF/Km
	Capacidad máxima no balanceada	≤330pF/100m
	Resistencia máxima DC no balanceada	≤5%
General	Radio de curvatura mínimo	100mm
	Rango Temp. almacenamiento	-15°C ~ 75°C
	Rango Temp. instalación	-15°C ~ 75°C
	Temperatura de trabajo	0°C ~ 60°C
	Máxima fuerza de tracción	25lbs
	CPR	Eca

Frecuencia (MHZ)	Att. Máx. (dB/100m)	NEXT (dB)	RL (dB)	PS-NEXT (dB)	ELFEXT (dB)	PSELFEXT (dB)
1	3.0	60.0	19.0	57.0	58.6	55.6
4	3.9	54.8	19.0	51.8	46.6	43.6
8	5.5	50.0	19.0	47.0	40.6	37.6
10	6.2	48.5	19.0	45.5	38.6	35.6
16	7.9	45.2	19.0	42.2	34.5	31.5
20	8.9	43.7	19.0	40.7	32.6	29.6
25	10.0	42.1	18.0	39.1	30.7	27.7
31.25	11.2	40.5	17.1	37.5	28.7	25.6
62.5	16.2	35.7	14.1	32.7	22.7	19.7
100	21.0	32.3	12.0	29.3	18.6	15.6



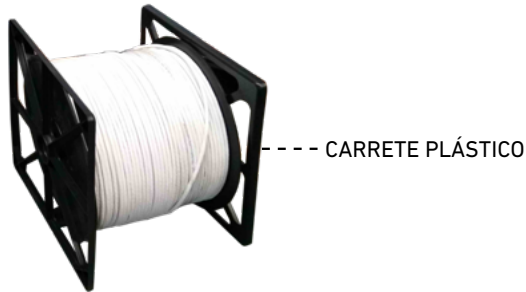
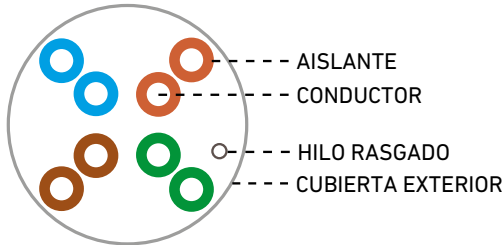
**CLU5 CU-E**

# Cable LAN Cat5e U/UTP LSZH-UV CPR Eca

## CLF 5 CU-E

- Cable 4 pares trenzados
- Carrete de plástico para fácil extracción
- 24 AWG
- CPR Eca
- Cubierta LSZH-UV blanco optimizada y adaptada para uso exterior

CPR  
Eca



CLF5 CU-E

Referencia		CLF5CU-E
Código		390007
Construcción	Apantallamiento	F/UTP
	Material del conductor	BC, cobre
	Diámetro del conductor	24 AWG (0.50±0.01mm)
	Material aislamiento	HDPE
	Grosor nominal	0.25mm
	Diámetro	1.0±0.05mm
	Material cubierta exterior	LSZH-UV
	Grosor exterior	6.0±0.5mm
	Color	Blanco RAL9010
	Cruceta	No
Hilo de rasgado	Si	
Blindaje exterior	Al foil - Polyester	
Características eléctricas	Rango de frecuencias	1-100MHz
	Impedancia	95.8Ω/Km
	Capacidad nominal mutua	≤56nF/Km
	Capacidad máxima no balanceada	≤330pF/100m
Resistencia máxima DC no balanceada	≤5%	
General	Radio de curvatura mínimo	65mm
	Rango Temp. almacenamiento	-15°C ~ 75°C
	Rango Temp. instalación	-15°C ~ 75°C
	Temperatura de trabajo	0°C ~ 60°C
	Máxima fuerza de tracción	25lbs
CPR	Eca	
Embalaje		Carrete en caja de 305m
Peso	Kg	12,8 / 10,6

Frecuencia (MHZ)	Att. Máx. (dB/100m)	NEXT (dB)	RL (dB)	PS-NEXT (dB)	ELFEXT (dB)	PSELFEXT (dB)
1	3.0	60.0	19.0	57.0	58.6	55.6
4	3.9	54.8	19.0	51.8	46.6	43.6
8	5.5	50.0	19.0	47.0	40.6	37.6
10	6.2	48.5	19.0	45.5	38.6	35.6
16	7.9	45.2	19.0	42.2	34.5	31.5
20	8.9	43.7	19.0	40.7	32.6	29.6
25	10.0	42.1	18.0	39.1	30.7	27.7
31.25	11.2	40.5	17.1	37.5	28.7	25.7
62.5	16.2	35.7	14.1	32.7	22.7	19.7
100	21.0	32.3	12.0	29.3	18.6	15.6

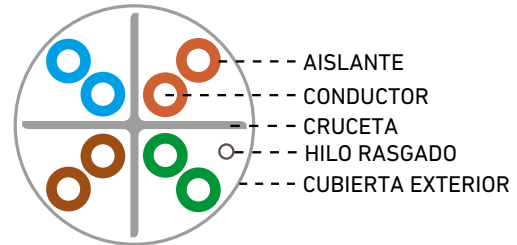
# Cable LAN Cat6 U/UTP BC 23 AWG PVC CPR Eca

## CLU 6 CCA

- Cable 4 pares trenzados con cruceta
- Carrete de plástico para fácil extracción
- 23 AWG
- CPR Eca

**CPR  
Eca**

Referencia		CLU6CCA
Código		390008
Construcción	Apantallamiento	U/UTP
	Material del conductor	CCA
	Diámetro del conductor	23 AWG (0.57±0.005mm)
	Material aislamiento	HDPE
	Diámetro nominal	1.02±0.05mm
	Material cubierta exterior	PVC-FR
	Diámetro exterior	6.10±0.3mm
	Color	Blanco RAL9010
	Cruceta	Si
Hilo de rasgado	Si	
Características eléctricas	Rango de frecuencias	1-250MHz
	Impedancia	100±15Ω
	Capacidad nominal mutua	≤56nF/Km
	Resistencia máxima DC no balanceada	≤9,5Ω/100m
General	Radio de curvatura mínimo	30mm
	Rango Temp. almacenamiento	-20°C ~ 80°C
	Rango Temp. instalación	-20°C ~ 80°C
	Temperatura de trabajo	-20°C ~ 80°C
	Máxima fuerza de tracción	100N
	CPR	Eca
Embalaje		Carrete en caja de 305m
Peso	Kg (Neto / Bruto)	8,5 / 10,5
Código de colores	Par1	Azul - blanco/azul
	Par2	Naranja - blanco/naranja
	Par3	Verde - blanco/verde
	Par4	Marrón - blanco/marrón



--- CARRETE PLÁSTICO



CLU 6 CCA

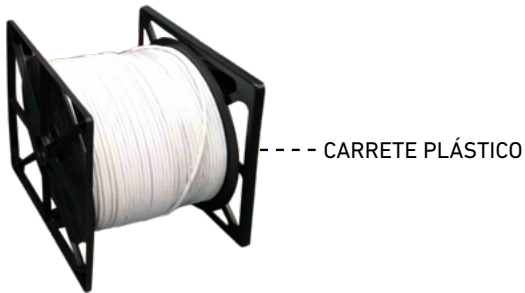
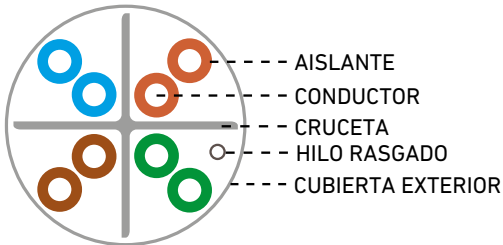
Frecuencia (MHZ)	Att. Máx. (dB/100m)	NEXT (dB)	RL (dB)	PS-NEXT (dB)	ELFEXT (dB)	PSELFEXT (dB)
1	2.0	74.3	20.0	72.3	67.8	64.8
4	3.8	65.3	23.0	63.3	55.8	52.8
8	5.3	60.8	24.5	58.8	49.7	46.7
10	6.0	59.3	25.0	57.3	47.8	44.8
16	7.6	56.2	25.0	54.2	43.7	40.7
20	8.5	54.8	25.0	52.8	41.8	38.8
25	9.5	53.3	24.3	51.3	39.8	36.8

# Cable LAN Cat6 U/UTP BC 24 AWG LSZH CPR Eca

## CLU 6 CU

- Cable 4 pares trenzados con cruceta
- Carrete de plástico para fácil extracción
- 24 AWG
- CPR Eca LSZH

CPR  
Eca



CLU 6 CU

Referencia		CLU6CU
Código		390001
Construcción	Apantallamiento	U/UTP
	Material del conductor	BC, cobre
	Diámetro del conductor	24 AWG (0.51±0.01mm)
	Material aislamiento	HDPE
	Grosor nominal	0.21mm
	Diámetro	0.93±0.05mm
	Material cubierta exterior	LSZH
	Diámetro exterior	5.8±0.10mm
	Color	Blanco RAL9010
	Cruceta	Si
Características eléctricas	Hilo de rasgado	Si
	Rango de frecuencias	1-250MHz
	Impedancia	93.8Ω/Km
	Capacidad nominal mutua	≤56nF/Km
	Capacidad máxima no balanceada	≤330pF/100m
General	Resistencia máxima DC no balanceada	≤5%
	Radio de curvatura mínimo	65mm
	Rango Temp. almacenamiento	-15°C ~ 75°C
	Rango Temp. instalación	-15°C ~ 75°C
	Temperatura de trabajo	0°C ~ 60°C
	Máxima fuerza de tracción	25lbs
Embalaje		Carrete en caja de 305m
Peso	Kg	11.5 / 9.7

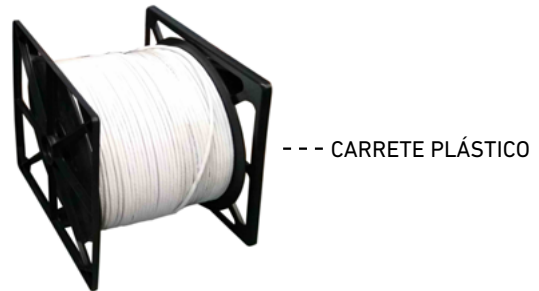
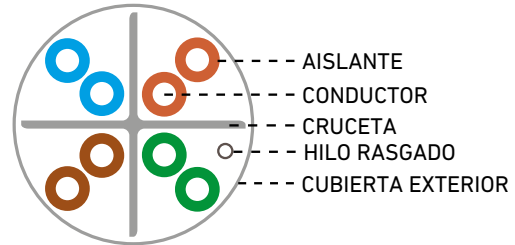
Frecuencia (MHZ)	Att. Máx. (dB/100m)	NEXT (dB)	RL (dB)	PS-NEXT (dB)	ELFEXT (dB)	PSELFEXT (dB)
1	3.0	65.0	19.1	62.0	64.2	61.2
4	3.5	64.1	21.0	61.8	52.1	49.1
8	5.0	59.4	21.0	57.0	46.1	43.1
10	5.5	57.8	21.0	55.5	44.2	41.2
16	7.0	54.6	20.0	52.2	40.1	37.1
20	7.9	53.1	19.5	50.7	38.2	35.2
25	8.9	51.5	19.0	49.1	36.2	33.2
31.25	10.0	50.0	18.5	47.5	34.3	31.3
62.5	14.4	45.1	16.0	42.7	28.3	25.3
100	18.6	41.8	14.0	39.3	24.2	21.2
200	27.4	36.9	11.0	34.3	18.2	15.2
250	31.1	35.3	10.0	32.7	16.2	13.2

# Cable LAN CAT6 U/UTP BC 24 AWG LSZH CPR Dca

## CLU 6 CUD

- Cable 4 pares trenzados con cruceta
- Carrete de plástico para fácil extracción
- CPR Dca LSZH

**CPR  
Dca**



CLU 6 CUD

Referencia		CLU 6 CUD
Código		390010
Construcción	Apantallamiento	U/UTP
	Material del conductor	BC, cobre
	Diámetro del conductor	24 AWG (0.51±0.01mm)
	Material aislamiento	HDPE
	Grosor nominal	0.21mm
	Diámetro	0.93±0.05mm
	Material cubierta exterior	LSZH
	Diámetro exterior	5.8±0.10mm
	Color	Blanco RAL9010
	Cruceta	Si
Hilo de rasgado	Si	
General	Rango de frecuencias	1-250MHz
	Impedancia	93.8Ω/Km
	Capacidad nominal mutua	≤56nF/Km
	Capacidad máxima no balanceada	≤330pF/100m
	Resistencia máxima DC no balanceada	≤5%
General	Radio de curvatura mínimo	65mm
	Rango Temp. almacenamiento	-15°C ~ 75°C
	Rango Temp. instalación	-15°C ~ 75°C
	Temperatura de trabajo	0°C ~ 60°C
	Máxima fuerza de tracción	25lbs
CPR	Dca	
Embalaje		Carrete en caja de 305m
Peso	Kg	11.5 / 9.7
Código de colores	Par1	Azul - blanco/azul
	Par2	Naranja - blanco/naranja
	Par3	Verde - blanco/verde
	Par4	Marrón - blanco/marrón

Frecuencia (MHZ)	Att. Máx. (dB/100m)	NEXT (dB)	RL (dB)	PS-NEXT (dB)	ELFEXT (dB)	PSELFEXT (dB)
1	3.0	65.0	19.1	62.0	64.2	61.2
4	3.5	64.1	21.0	61.8	52.1	49.1
8	5.0	59.4	21.0	57.0	46.1	43.1
10	5.5	57.8	21.0	55.5	44.2	41.2
16	7.0	54.6	20.0	52.2	40.1	37.1
20	7.9	53.1	19.5	50.7	38.2	35.2
25	8.9	51.5	19.0	49.1	36.2	33.2
31.25	10.0	50.0	18.5	47.5	34.3	31.3
62.5	14.4	45.1	16.0	42.7	28.3	25.3
100	18.6	41.8	14.0	39.3	24.2	21.2
200	27.4	36.9	11.0	34.3	18.2	15.2
250	31.1	35.3	10.0	32.7	16.2	13.2

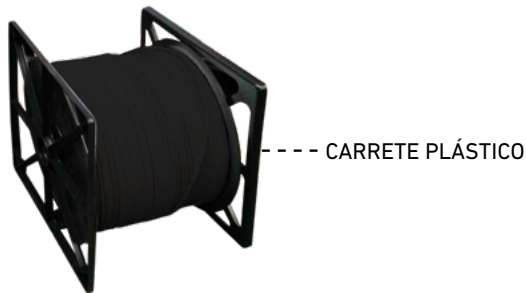
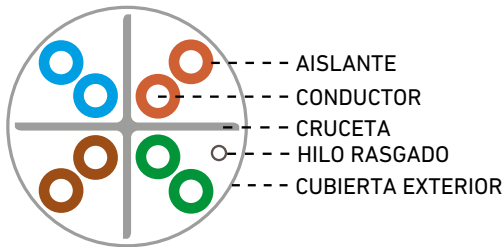


# Cable LAN Cat6 U/UTP

## BC 24 AWG PE negro

### CLU6CU-E

- Cable 4 pares trenzados con cruceta
- Carrete de plástico para fácil extracción
- PE negro para exterior
- 24 AWG



CLF5 CU-E

Referencia	CLU6CU-E	
Código	390002	
Construcción	Apantallamiento	U/UTP
	Material del conductor	BC, cobre
	Diámetro del conductor	24 AWG (0.51±0.01mm)
	Material aislamiento	HDPE
	Grosor nominal	0.21mm
	Diámetro	0.93±0.05mm
	Material cubierta exterior	PE
	Grosor exterior	5.6±0.5mm
	Color	Negro
	Cruceta	Si
Hilo de rasgado	Si	
Características eléctricas	Rango de frecuencias	1-250MHz
	Impedancia	93.8Ω/Km
	Capacidad nominal mutua	≤56nF/Km
	Capacidad máxima no balanceada	≤330pF/100m
	Resistencia máxima DC no balanceada	≤5%
	General	Radio de curvatura mínimo
Rango Temp. almacenamiento		-15°C ~ 75°C
Rango Temp. instalación		-15°C ~ 75°C
Temperatura de trabajo		0°C ~ 60°C
Máxima fuerza de tracción		25lbs
Embalaje	Carrete en caja de 305m	
Peso (bruto/neto)	Kg	10,8 / 9

Frecuencia (MHZ)	Att. Máx. (dB/100m)	NEXT (dB)	RL (dB)	PS-NEXT (dB)	ELFEXT (dB)	PSELFEXT (dB)
1	3.0	65.0	19.1	62.0	64.2	61.2
4	3.5	64.1	21.0	61.8	52.1	49.1
8	5.0	59.4	21.0	57.0	46.1	43.1
10	5.5	57.8	21.0	55.5	44.2	41.2
16	7.0	54.6	20.0	52.2	40.1	37.1
20	7.9	53.1	19.5	50.7	38.2	35.2
25	8.9	51.5	19.0	49.1	36.2	33.2
31.25	10.0	50.0	18.5	47.5	34.3	31.3
62.5	14.4	45.1	16.0	42.7	28.3	25.3
100	18.6	41.8	14.0	39.3	24.2	21.2
200	27.4	36.9	11.0	34.3	18.2	15.2
250	31.1	35.3	10.0	32.7	16.2	13.2

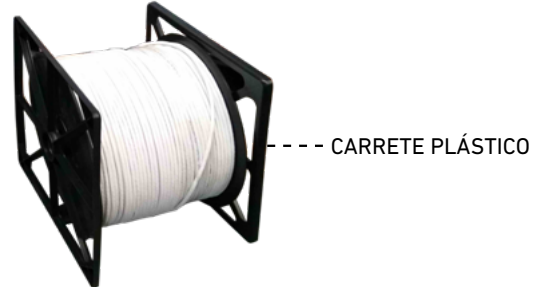
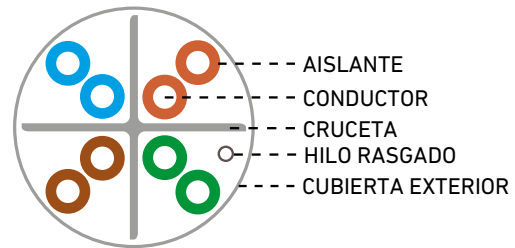
# Cable LAN Cat6A U/UTP BC 23 AWG LSZH CPR Eca

## CLU 6 A

- Cable 4 pares trenzados con cruceta
- Carrete de plástico para fácil extracción
- 23 AWG
- CPR Eca

**CPR  
Eca**

Referencia		CLU6A
Código		390003
Construcción	Apantallamiento	U/UTP
	Material del conductor	BC, cobre
	Diámetro del conductor	23 AWG (0.56±0.02mm)
	Material aislamiento	HDPE
	Grosor nominal	0.21mm
	Diámetro	1.0±0.05mm
	Material cubierta exterior	LSZH
	Grosor exterior	6.3±0.5mm
	Color	Blanco RAL9010
	Cruceta	Si
Hilo de rasgado	Si	
Características eléctricas	Rango de frecuencias	1-500MHz
	Impedancia	93.8Ω/Km
	Capacidad nominal mutua	≤5nF/Km
	Capacidad máxima no balanceada	≤330pF/100m
	Resistencia máxima DC no balanceada	≤5%
General	Radio de curvatura mínimo	65mm
	Rango Temp. almacenamiento	-15°C ~ 75°C
	Rango Temp. instalación	-15°C ~ 75°C
	Temperatura de trabajo	0°C ~ 60°C
	Máxima fuerza de tracción	25lbs
	CPR	Eca
Embalaje		Carrete en caja de 305m
Peso	Kg	15 / 13



CLU 6 A

Frecuencia (MHZ)	Att. Máx. (dB/100m)	NEXT (dB)	RL (dB)	PS-NEXT (dB)	ELFEXT (dB)	PSELFEXT (dB)
1	3.0	65.0	19.1	62.0	64.2	61.2
4	3.5	64.1	21.0	61.8	52.1	49.1
8	5.0	59.4	21.0	57.0	46.1	43.1
10	5.5	57.8	21.0	55.5	44.2	41.2
16	7.0	54.6	20.0	52.2	40.1	37.1
20	7.8	53.1	19.5	50.7	38.2	35.2
25	8.8	51.5	19.0	49.1	36.2	33.2
31.25	9.8	50.0	18.5	47.5	34.3	31.3
62.5	14.0	45.1	16.0	42.7	28.3	25.3
100	18.0	41.8	14.0	39.3	24.2	21.2
200	26.1	36.9	11.0	34.3	18.2	15.2
250	29.5	35.3	10.0	32.7	16.2	13.2
350	35.6	31.8	8.6	29.1	13.3	10.3
500	43.8	26.7	8.0	23.8	10.2	7.2

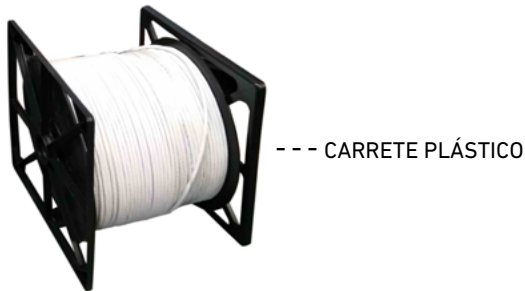
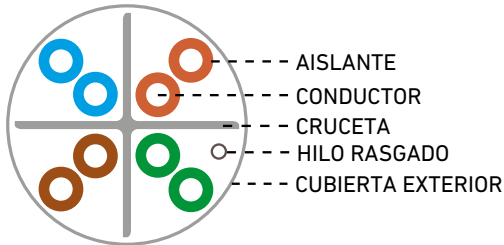
# Cable LAN Cat6A U/UTP

## BC 23 AWG LSZH CPR B2ca

### CLU 6AB

- Cable 4 pares trenzados con cruceta
- Carrete de plástico para fácil extracción
- 23 AWG
- CPR B2ca s1 d2 a1

CPR  
Bca



CLU 6 AB

Referencia		CLU 6AB
Código		390004
Construcción	Apantallamiento	U/UTP
	Material del conductor	BC, cobre
	Diámetro del conductor	23 AWG (0.56±0.02mm)
	Material aislamiento	HDPE
	Grosor nominal	0.21mm
	Diámetro	1.0±0.05mm
	Material cubierta exterior	LSZH
	Grosor exterior	6.3±0.5mm
	Color	Blanco RAL9010
	Cruceta	Si
Hilo de rasgado	Si	
Características eléctricas	Rango de frecuencias	1-500MHz
	Impedancia	93.8Ω/Km
	Capacidad nominal mutua	≤56nF/Km
	Capacidad máxima no balanceada	≤330pF/100m
	Resistencia máxima DC no balanceada	≤5%
General	Radio de curvatura mínimo	65mm
	Rango Temp. almacenamiento	-15°C ~ 75°C
	Rango Temp. instalación	-15°C ~ 75°C
	Temperatura de trabajo	0°C ~ 60°C
	Máxima fuerza de tracción	25lbs
	CPR	B2ca s1 d2 a1
Embalaje		Carrete en caja de 305m
Peso	Kg	18,7 / 16,5

Frecuencia (MHZ)	Att. Máx. (dB/100m)	NEXT (dB)	RL (dB)	PS-NEXT (dB)	ELFEXT (dB)	PSELFEXT (dB)
1	3.0	65.0	19.1	62.0	64.2	61.2
4	3.5	64.1	21.0	61.8	52.1	49.1
8	5.0	59.4	21.0	57.0	46.1	43.1
10	5.5	57.8	21.0	55.5	44.2	41.2
16	7.0	54.6	20.0	52.2	40.1	37.1
20	7.8	53.1	19.5	50.7	38.2	35.2
25	8.8	51.5	19.0	49.1	36.2	33.2
31.25	9.8	50.0	18.5	47.5	34.3	31.3
62.5	14.0	45.1	16.0	42.7	28.3	25.3
100	18.0	41.8	14.0	39.3	24.2	21.2
200	26.1	36.9	11.0	34.3	18.2	15.2
250	29.5	35.3	10.0	32.7	16.2	13.2
350	35.6	31.8	8.6	29.1	13.3	10.3
500	43.8	26.7	8.0	23.8	10.2	7.2

# Accesorios / Racks y bandejas / Herramientas

## ACCESORIOS

393001	KJ C6	Keystone Jack CAT6 UTP para patch panel y roseta R C6
393002	KJ C6 TL	Keystone Jack CAT6 UTP sin herramienta para patch panel y roseta R C6
393021	R C6	Roseta terminal datos con tapa antipolvo para conector hembra de datos (no incluida)
393003	RJ45 C6	Conector macho RJ45 CAT6 UTP
393004	C RJ45	Capuchón blanco para conector RJ45 macho

## RACKS Y BANDEJAS

396001	R6 19 450	Rack mural de 19" 6U 450mm fondo
396002	R9 19 450	Rack mural de 19" 9U 450mm fondo
392001	PP 24 S	Patch panel 24 puertos vacío rack 19"
392020	SC PP	Soporta cables para PP 24 S
392005	PP 24 6 C	Patch panel 24 puertos CAT6 montados para rack 19"
397001	PC 1 19	Panel ciego 1U rack 19"
397002	PC 2 19	Panel ciego 2U rack 19"
397003	GC 19	Guía cables para rack 19" - 1U
397004	PPC 19	Pasa cables para rack 19" - 1U

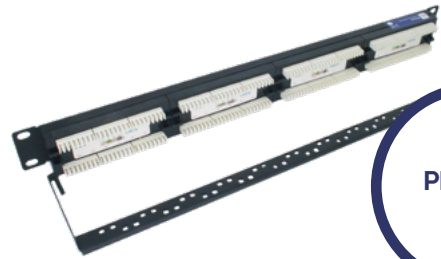
## HERRAMIENTAS

394001	H KJ	Herramienta inserción y corte para Keystone KJ C6
394002	H RJ45	Herramienta crimpadora para conector RJ45 C6

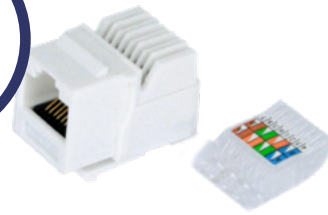
R6 19 450



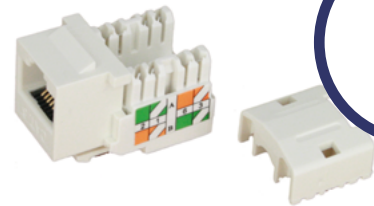
PP 24 6C



KJ C6 TL



KJ C6



R C6



H RJ45



PRUEBAS DE  
CERTIFICACIÓN  
TÉCNICA



**Cable ID: CLU 5 CCA**

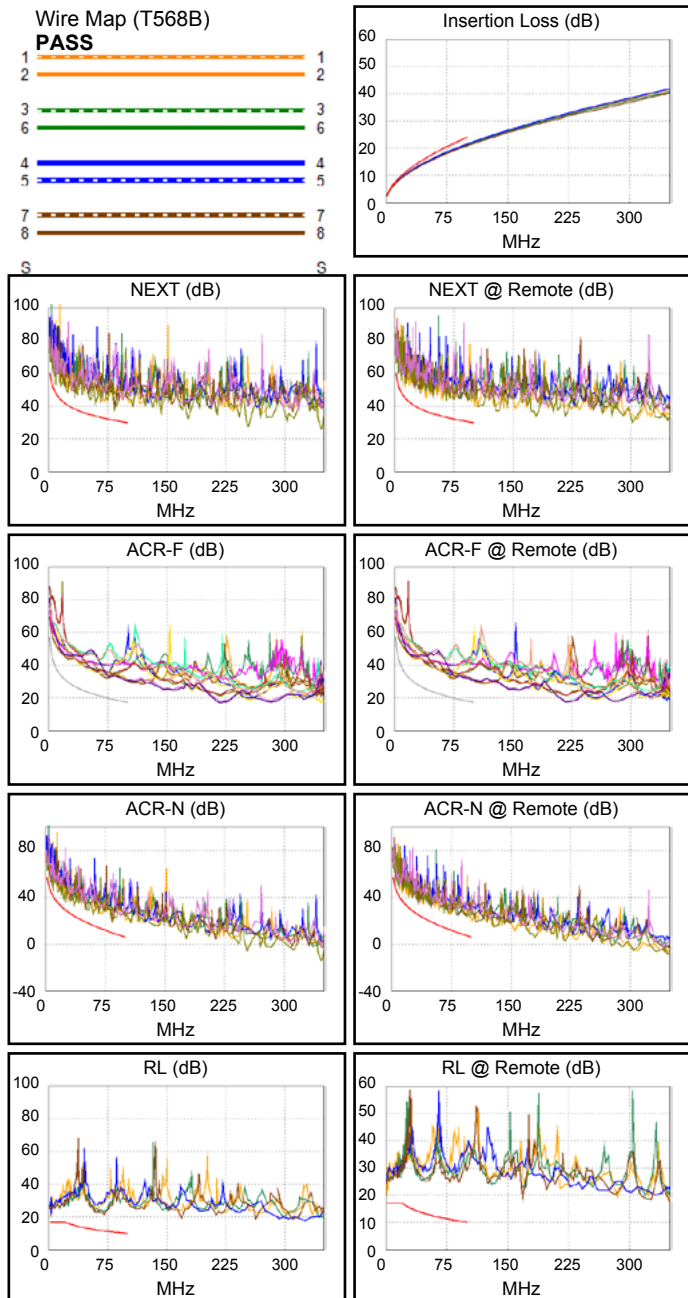
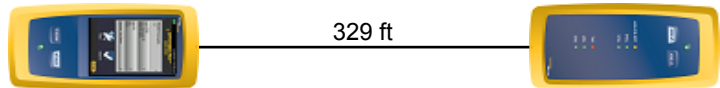
Date / Time: 06/19/2019 08:10:59 AM  
**Headroom 5.0 dB (NEXT 36-78)**  
**Test Limit: TIA Cat 5e Channel**  
 Cable Type: Cat 5e U/UTP  
 NVP: 69.0%

Software Version: V6.0 Build 6  
 Limits Version: V7.0

**Test Summary: PASS**

Model: DSX-5000  
 Main S/N: 2405257  
 Remote S/N: 2420489  
 Main Adapter: DSX-CHA004  
 Remote Adapter: DSX-CHA004

Length (ft), Limit 328	[Pair 12]	200
Prop. Delay (ns), Limit 555	[Pair 45]	344
Delay Skew (ns), Limit 50	[Pair 45]	5
Resistance (ohms)	[Pair 12]	34.7
Insertion Loss Margin (dB)	[Pair 45]	2.4
Frequency (MHz)	[Pair 45]	100.0
Limit (dB)	[Pair 45]	24.0



**Worst Case Margin Worst Case Value**

<b>PASS</b>	MAIN	SR	MAIN	SR
Worst Pair	36-78	12-36	36-78	12-36
<b>NEXT (dB)</b>	5.0	6.8	6.2	12.7
Freq. (MHz)	8.6	12.9	83.5	97.5
Limit (dB)	48.1	45.2	31.4	30.3
Worst Pair	36	36	36	36
<b>PS NEXT (dB)</b>	6.9	8.5	7.4	13.1
Freq. (MHz)	8.5	13.0	83.8	93.0
Limit (dB)	45.2	42.1	28.4	27.6

<b>PASS</b>	MAIN	SR	MAIN	SR
Worst Pair	12-36	36-12	36-12	78-36
<b>ACR-F (dB)</b>	12.0	11.7	13.1	13.3
Freq. (MHz)	72.5	72.5	100.0	100.0
Limit (dB)	20.2	20.2	17.4	17.4
Worst Pair	36	12	36	36
<b>PS ACR-F (dB)</b>	11.9	12.2	13.1	12.9
Freq. (MHz)	76.3	72.5	100.0	100.0
Limit (dB)	16.8	17.2	14.4	14.4

<b>N/A</b>	MAIN	SR	MAIN	SR
Worst Pair	36-78	12-36	36-78	12-36
<b>ACR-N (dB)</b>	5.6	7.4	8.8	15.6
Freq. (MHz)	8.6	12.9	83.5	98.0
Limit (dB)	41.5	37.1	9.7	6.5
Worst Pair	36	36	36	12
<b>PS ACR-N (dB)</b>	7.4	9.1	9.9	16.0
Freq. (MHz)	8.5	13.0	84.0	98.3
Limit (dB)	38.6	34.0	6.6	3.4

<b>PASS</b>	MAIN	SR	MAIN	SR
Worst Pair	12	78	78	78
<b>RL (dB)</b>	6.3	6.5	9.7	6.5
Freq. (MHz)	2.4	2.4	70.0	2.4
Limit (dB)	17.0	17.0	11.6	17.0

Compliant Network Standards:  
 10BASE-T      100BASE-TX      100BASE-T4  
 1000BASE-T    ATM-25            ATM-51  
 ATM-155      100VG-AnyLan    TR-4  
 TR-16 Active    TR-16 Passive

# CLU 5 CU



## Cable ID: CLU 5 CU

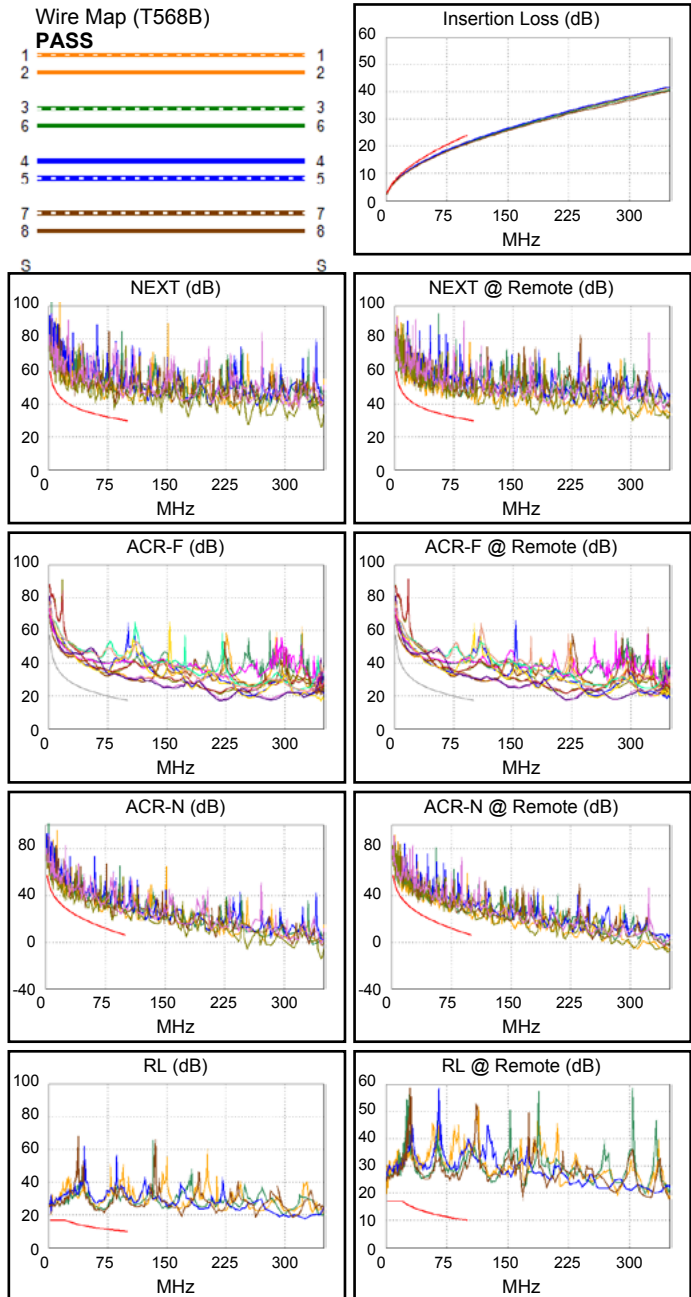
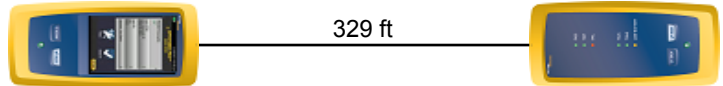
Date / Time: 06/19/2019 08:10:59 AM  
 Headroom 5.0 dB (NEXT 36-78)  
 Test Limit: TIA Cat 5e Channel  
 Cable Type: Cat 5e U/UTP  
 NVP: 69.0%

Software Version: V6.0 Build 6  
 Limits Version: V7.0

## Test Summary: PASS

Model: DSX-5000  
 Main S/N: 2405257  
 Remote S/N: 2420489  
 Main Adapter: DSX-CHA004  
 Remote Adapter: DSX-CHA004

Length (ft), Limit 328	[Pair 12]	329
Prop. Delay (ns), Limit 555	[Pair 45]	501
Delay Skew (ns), Limit 50	[Pair 45]	9
Resistance (ohms)	[Pair 12]	22.31
Insertion Loss Margin (dB)	[Pair 45]	2.4
Frequency (MHz)	[Pair 45]	100.0
Limit (dB)	[Pair 45]	24.0



Worst Case Margin Worst Case Value

PASS	MAIN	SR	MAIN	SR
Worst Pair	36-78	12-36	36-78	12-36
<b>NEXT (dB)</b>	5.0	6.8	6.2	12.7
Freq. (MHz)	8.6	12.9	83.5	97.5
Limit (dB)	48.1	45.2	31.4	30.3
Worst Pair	36	36	36	36
<b>PS NEXT (dB)</b>	6.9	8.5	7.4	13.1
Freq. (MHz)	8.5	13.0	83.8	93.0
Limit (dB)	45.2	42.1	28.4	27.6

PASS	MAIN	SR	MAIN	SR
Worst Pair	12-36	36-12	36-12	78-36
<b>ACR-F (dB)</b>	12.0	11.7	13.1	13.3
Freq. (MHz)	72.5	72.5	100.0	100.0
Limit (dB)	20.2	20.2	17.4	17.4
Worst Pair	36	12	36	36
<b>PS ACR-F (dB)</b>	11.9	12.2	13.1	12.9
Freq. (MHz)	76.3	72.5	100.0	100.0
Limit (dB)	16.8	17.2	14.4	14.4

N/A	MAIN	SR	MAIN	SR
Worst Pair	36-78	12-36	36-78	12-36
<b>ACR-N (dB)</b>	5.6	7.4	8.8	15.6
Freq. (MHz)	8.6	12.9	83.5	98.0
Limit (dB)	41.5	37.1	9.7	6.5
Worst Pair	36	36	36	12
<b>PS ACR-N (dB)</b>	7.4	9.1	9.9	16.0
Freq. (MHz)	8.5	13.0	84.0	98.3
Limit (dB)	38.6	34.0	6.6	3.4

PASS	MAIN	SR	MAIN	SR
Worst Pair	12	78	78	78
<b>RL (dB)</b>	6.3	6.5	9.7	6.5
Freq. (MHz)	2.4	2.4	70.0	2.4
Limit (dB)	17.0	17.0	11.6	17.0

Compliant Network Standards:  
 10BASE-T      100BASE-TX      100BASE-T4  
 1000BASE-T    ATM-25            ATM-51  
 ATM-155      100VG-AnyLan    TR-4  
 TR-16 Active    TR-16 Passive



**Cable ID: CLU 5 CU-E**

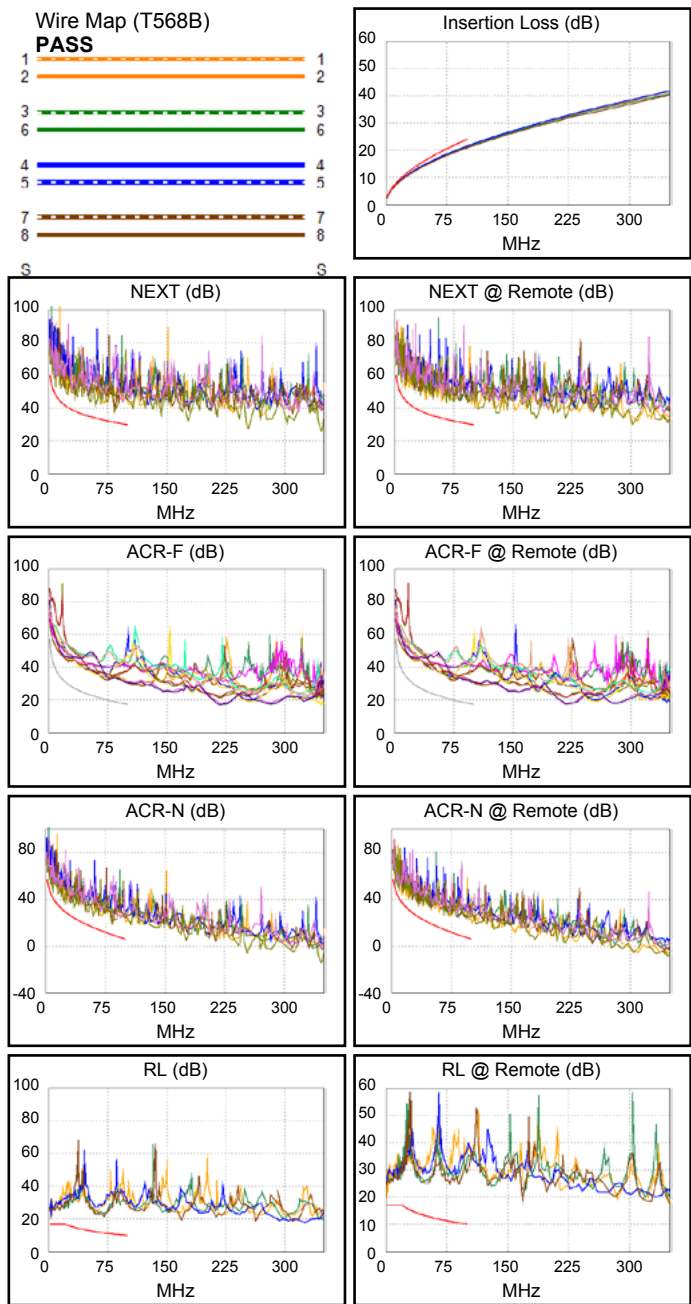
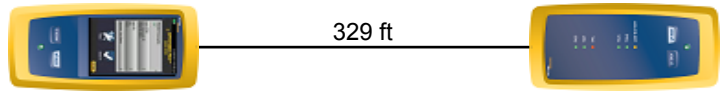
Date / Time: 06/19/2019 08:10:59 AM  
 Headroom 5.0 dB (NEXT 36-78)  
 Test Limit: TIA Cat 5e Channel  
 Cable Type: Cat 5e U/UTP  
 NVP: 69.0%

Software Version: V6.0 Build 6  
 Limits Version: V7.0

**Test Summary: PASS**

Model: DSX-5000  
 Main S/N: 2405257  
 Remote S/N: 2420489  
 Main Adapter: DSX-CHA004  
 Remote Adapter: DSX-CHA004

Length (ft), Limit 328	[Pair 12]	329
Prop. Delay (ns), Limit 555	[Pair 45]	501
Delay Skew (ns), Limit 50	[Pair 45]	9
Resistance (ohms)	[Pair 12]	22.31
Insertion Loss Margin (dB)	[Pair 45]	2.4
Frequency (MHz)	[Pair 45]	100.0
Limit (dB)	[Pair 45]	24.0



**Worst Case Margin Worst Case Value**

PASS	MAIN	SR	MAIN	SR
Worst Pair	36-78	12-36	36-78	12-36
<b>NEXT (dB)</b>	5.0	6.8	6.2	12.7
Freq. (MHz)	8.6	12.9	83.5	97.5
Limit (dB)	48.1	45.2	31.4	30.3
Worst Pair	36	36	36	36
<b>PS NEXT (dB)</b>	6.9	8.5	7.4	13.1
Freq. (MHz)	8.5	13.0	83.8	93.0
Limit (dB)	45.2	42.1	28.4	27.6

PASS	MAIN	SR	MAIN	SR
Worst Pair	12-36	36-12	36-12	78-36
<b>ACR-F (dB)</b>	12.0	11.7	13.1	13.3
Freq. (MHz)	72.5	72.5	100.0	100.0
Limit (dB)	20.2	20.2	17.4	17.4
Worst Pair	36	12	36	36
<b>PS ACR-F (dB)</b>	11.9	12.2	13.1	12.9
Freq. (MHz)	76.3	72.5	100.0	100.0
Limit (dB)	16.8	17.2	14.4	14.4

N/A	MAIN	SR	MAIN	SR
Worst Pair	36-78	12-36	36-78	12-36
<b>ACR-N (dB)</b>	5.6	7.4	8.8	15.6
Freq. (MHz)	8.6	12.9	83.5	98.0
Limit (dB)	41.5	37.1	9.7	6.5
Worst Pair	36	36	36	12
<b>PS ACR-N (dB)</b>	7.4	9.1	9.9	16.0
Freq. (MHz)	8.5	13.0	84.0	98.3
Limit (dB)	38.6	34.0	6.6	3.4

PASS	MAIN	SR	MAIN	SR
Worst Pair	12	78	78	78
<b>RL (dB)</b>	6.3	6.5	9.7	6.5
Freq. (MHz)	2.4	2.4	70.0	2.4
Limit (dB)	17.0	17.0	11.6	17.0

Compliant Network Standards:  
 10BASE-T      100BASE-TX      100BASE-T4  
 1000BASE-T    ATM-25            ATM-51  
 ATM-155       100VG-AnyLan    TR-4  
 TR-16 Active    TR-16 Passive



# CLF5 CU-E



## Cable ID: CLF 5CU-E

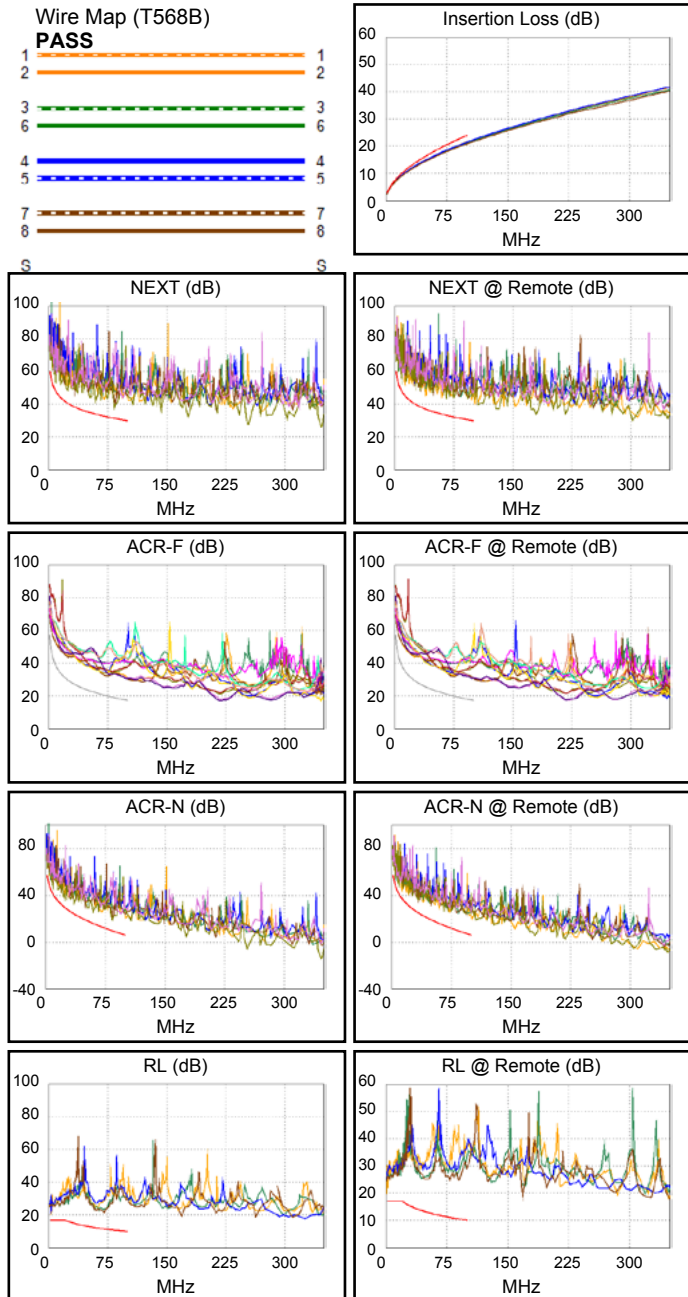
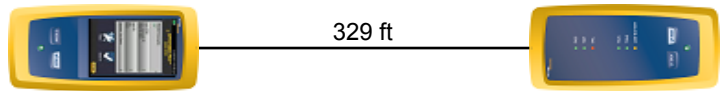
Date / Time: 06/19/2019 08:10:59 AM  
 Headroom 5.0 dB (NEXT 36-78)  
 Test Limit: TIA Cat 5e Channel  
 Cable Type: Cat 5e U/UTP  
 NVP: 69.0%

Software Version: V6.0 Build 6  
 Limits Version: V7.0

## Test Summary: PASS

Model: DSX-5000  
 Main S/N: 2405257  
 Remote S/N: 2420489  
 Main Adapter: DSX-CHA004  
 Remote Adapter: DSX-CHA004

Length (ft), Limit 328	[Pair 12]	329
Prop. Delay (ns), Limit 555	[Pair 45]	501
Delay Skew (ns), Limit 50	[Pair 45]	9
Resistance (ohms)	[Pair 12]	22.31
Insertion Loss Margin (dB)	[Pair 45]	2.4
Frequency (MHz)	[Pair 45]	100.0
Limit (dB)	[Pair 45]	24.0



### Worst Case Margin Worst Case Value

PASS	MAIN	SR	MAIN	SR
Worst Pair	36-78	12-36	36-78	12-36
<b>NEXT (dB)</b>	5.0	6.8	6.2	12.7
Freq. (MHz)	8.6	12.9	83.5	97.5
Limit (dB)	48.1	45.2	31.4	30.3
Worst Pair	36	36	36	36
<b>PS NEXT (dB)</b>	6.9	8.5	7.4	13.1
Freq. (MHz)	8.5	13.0	83.8	93.0
Limit (dB)	45.2	42.1	28.4	27.6

PASS	MAIN	SR	MAIN	SR
Worst Pair	12-36	36-12	36-12	78-36
<b>ACR-F (dB)</b>	12.0	11.7	13.1	13.3
Freq. (MHz)	72.5	72.5	100.0	100.0
Limit (dB)	20.2	20.2	17.4	17.4
Worst Pair	36	12	36	36
<b>PS ACR-F (dB)</b>	11.9	12.2	13.1	12.9
Freq. (MHz)	76.3	72.5	100.0	100.0
Limit (dB)	16.8	17.2	14.4	14.4

N/A	MAIN	SR	MAIN	SR
Worst Pair	36-78	12-36	36-78	12-36
<b>ACR-N (dB)</b>	5.6	7.4	8.8	15.6
Freq. (MHz)	8.6	12.9	83.5	98.0
Limit (dB)	41.5	37.1	9.7	6.5
Worst Pair	36	36	36	12
<b>PS ACR-N (dB)</b>	7.4	9.1	9.9	16.0
Freq. (MHz)	8.5	13.0	84.0	98.3
Limit (dB)	38.6	34.0	6.6	3.4

PASS	MAIN	SR	MAIN	SR
Worst Pair	12	78	78	78
<b>RL (dB)</b>	6.3	6.5	9.7	6.5
Freq. (MHz)	2.4	2.4	70.0	2.4
Limit (dB)	17.0	17.0	11.6	17.0

Compliant Network Standards:  
 10BASE-T      100BASE-TX      100BASE-T4  
 1000BASE-T    ATM-25            ATM-51  
 ATM-155      100VG-AnyLan    TR-4  
 TR-16 Active    TR-16 Passive



**Cable ID: UTP CAT6 CLU 6 CCA**

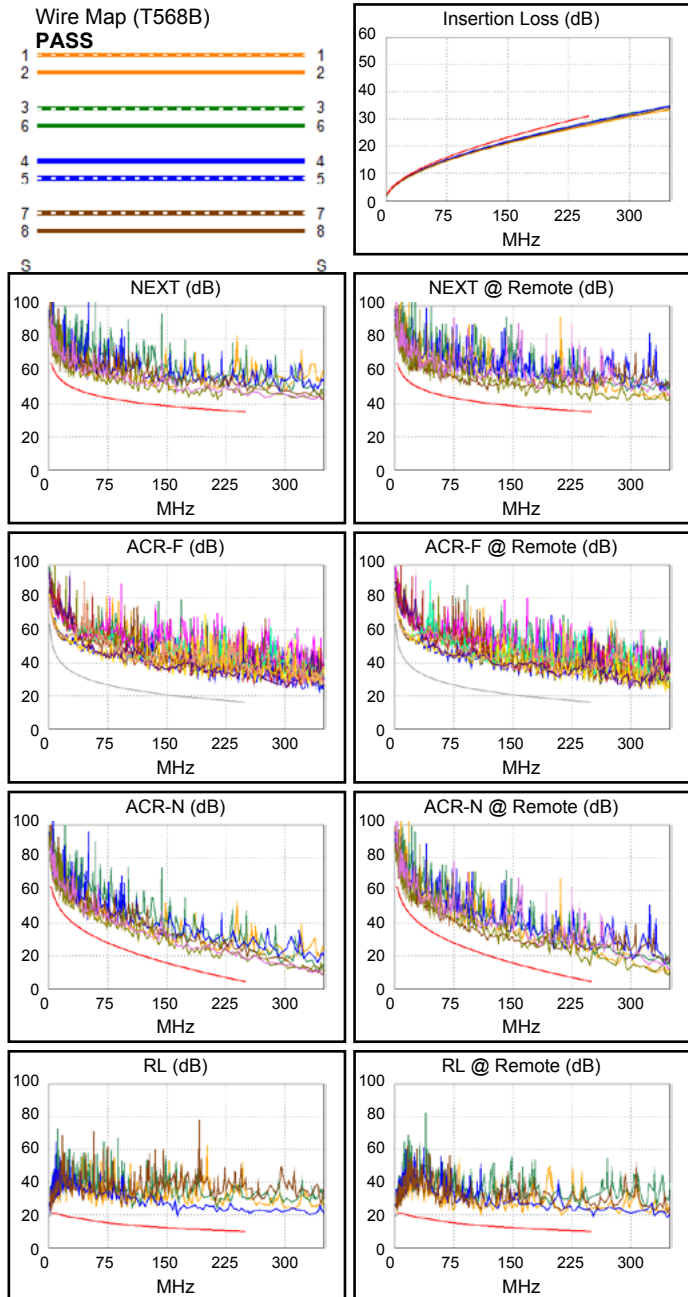
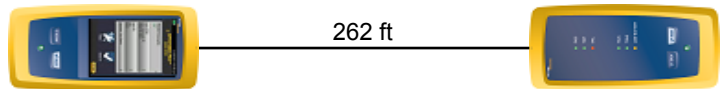
Date / Time: 05/20/2019 08:45:32 AM  
 Headroom 2,2dB (NEXT 45-78)  
 Test Limit: TIA Cat 6 Perm. Link Cable  
 Type: Cat 6 U/UTP  
 NVP: 69.0%

Software Version: V5.1 Build 4  
 Limits Version: V6.1  
 Calibration Start Date:

**Test Summary: PASS**

Model: DSX-5000  
 Main S/N: 2405257  
 Remote S/N: 2420489  
 Main Adapter: DSX-PLA004  
 Remote Adapter: DSX-PLA004

Length (ft), Limit 295	[Pair 12]	230
Prop. Delay (ns), Limit 498	[Pair 45]	344
Delay Skew (ns), Limit 44	[Pair 45]	5
Resistance (ohms)	[Pair 12]	34,7
Insertion Loss Margin (dB)	[Pair 36]	2,3
Frequency (MHz)	[Pair 36]	100
Limit (dB)	[Pair 36]	24



Worst Case Margin Worst Case Value

PASS	MAIN	SR	MAIN	SR
Worst Pair	36-78	36-78	36-78	36-78
<b>NEXT (dB)</b>	6.4	6.1	6.6	6.7
Freq. (MHz)	178.0	17.5	214.5	248.0
Limit (dB)	37.8	54.0	36.4	35.4
Worst Pair	78	36	78	36
<b>PS NEXT (dB)</b>	7.5	7.8	7.8	8.4
Freq. (MHz)	44.3	132.0	214.5	248.0
Limit (dB)	45.1	37.3	33.8	32.8

PASS	MAIN	SR	MAIN	SR
Worst Pair	12-78	78-12	12-78	78-12
<b>ACR-F (dB)</b>	11.7	12.1	12.9	13.2
Freq. (MHz)	211.5	211.5	241.5	241.5
Limit (dB)	17.7	17.7	16.5	16.5
Worst Pair	78	36	78	36
<b>PS ACR-F (dB)</b>	12.9	13.7	12.9	13.7
Freq. (MHz)	211.5	226.0	211.5	226.0
Limit (dB)	14.7	14.1	14.7	14.1

N/A	MAIN	SR	MAIN	SR
Worst Pair	36-78	36-78	36-78	36-78
<b>ACR-N (dB)</b>	7.7	6.6	9.2	9.8
Freq. (MHz)	4.8	17.5	214.5	248.0
Limit (dB)	59.1	46.6	8.0	4.4
Worst Pair	78	78	78	36
<b>PS ACR-N (dB)</b>	8.3	8.4	12.8	10.8
Freq. (MHz)	44.3	17.5	243.5	248.0
Limit (dB)	33.1	44.2	2.3	1.8

PASS	MAIN	SR	MAIN	SR
Worst Pair	12	12	45	12
<b>RL (dB)</b>	5.0	4.4	8.0	8.3
Freq. (MHz)	3.9	3.9	163.5	213.0
Limit (dB)	21.0	21.0	11.9	10.7

Compliant Network Standards:  
 10BASE-T      100BASE-TX      100BASE-T4  
 1000BASE-T    ATM-25            ATM-51  
 ATM-155      100VG-AnyLan    TR-4  
 TR-16 Active    TR-16 Passive



**Cable ID: UTP CAT6 CLU6CU**

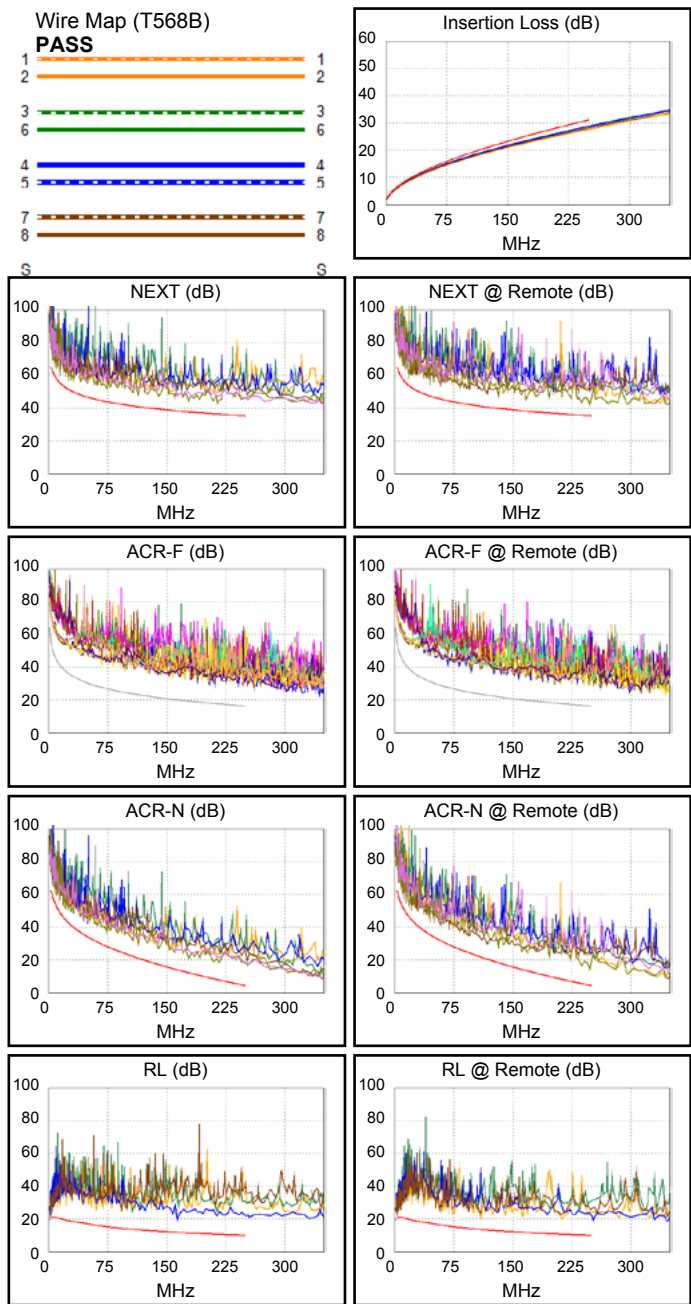
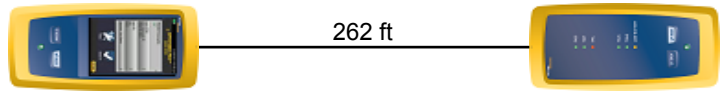
Date / Time: 05/20/2019 08:45:32 AM  
**Headroom 6.1 dB (NEXT 36-78)**  
**Test Limit: TIA Cat 6 Perm. Link**  
 Cable Type: Cat 6 U/UTP  
 NVP: 69.0%

Software Version: V5.1 Build 4  
 Limits Version: V6.1  
 Calibration Start Date:

**Test Summary: PASS**

Model: DSX-5000  
 Main S/N: 2405257  
 Remote S/N: 2420489  
 Main Adapter: DSX-PLA004  
 Remote Adapter: DSX-PLA004

Length (ft), Limit 295	[Pair 12]	262
Prop. Delay (ns), Limit 498	[Pair 45]	431
Delay Skew (ns), Limit 44	[Pair 45]	21
Resistance (ohms)	[Pair 12]	15.67
Insertion Loss Margin (dB)	[Pair 36]	3.9
Frequency (MHz)	[Pair 36]	250.0
Limit (dB)	[Pair 36]	31.1



**Worst Case Margin Worst Case Value**

<b>PASS</b>	MAIN	SR	MAIN	SR
Worst Pair	36-78	36-78	36-78	36-78
<b>NEXT (dB)</b>	6.4	6.1	6.6	6.7
Freq. (MHz)	178.0	17.5	214.5	248.0
Limit (dB)	37.8	54.0	36.4	35.4
Worst Pair	78	36	78	36
<b>PS NEXT (dB)</b>	7.5	7.8	7.8	8.4
Freq. (MHz)	44.3	132.0	214.5	248.0
Limit (dB)	45.1	37.3	33.8	32.8

<b>PASS</b>	MAIN	SR	MAIN	SR
Worst Pair	12-78	78-12	12-78	78-12
<b>ACR-F (dB)</b>	11.7	12.1	12.9	13.2
Freq. (MHz)	211.5	211.5	241.5	241.5
Limit (dB)	17.7	17.7	16.5	16.5
Worst Pair	78	36	78	36
<b>PS ACR-F (dB)</b>	12.9	13.7	12.9	13.7
Freq. (MHz)	211.5	226.0	211.5	226.0
Limit (dB)	14.7	14.1	14.7	14.1

<b>N/A</b>	MAIN	SR	MAIN	SR
Worst Pair	36-78	36-78	36-78	36-78
<b>ACR-N (dB)</b>	7.7	6.6	9.2	9.8
Freq. (MHz)	4.8	17.5	214.5	248.0
Limit (dB)	59.1	46.6	8.0	4.4
Worst Pair	78	78	78	36
<b>PS ACR-N (dB)</b>	8.3	8.4	12.8	10.8
Freq. (MHz)	44.3	17.5	243.5	248.0
Limit (dB)	33.1	44.2	2.3	1.8

<b>PASS</b>	MAIN	SR	MAIN	SR
Worst Pair	12	12	45	12
<b>RL (dB)</b>	5.0	4.4	8.0	8.3
Freq. (MHz)	3.9	3.9	163.5	213.0
Limit (dB)	21.0	21.0	11.9	10.7

Compliant Network Standards:  
 10BASE-T      100BASE-TX      100BASE-T4  
 1000BASE-T    ATM-25            ATM-51  
 ATM-155      100VG-AnyLan    TR-4  
 TR-16 Active    TR-16 Passive



**Cable ID: UTP CAT6 CLU6CU**

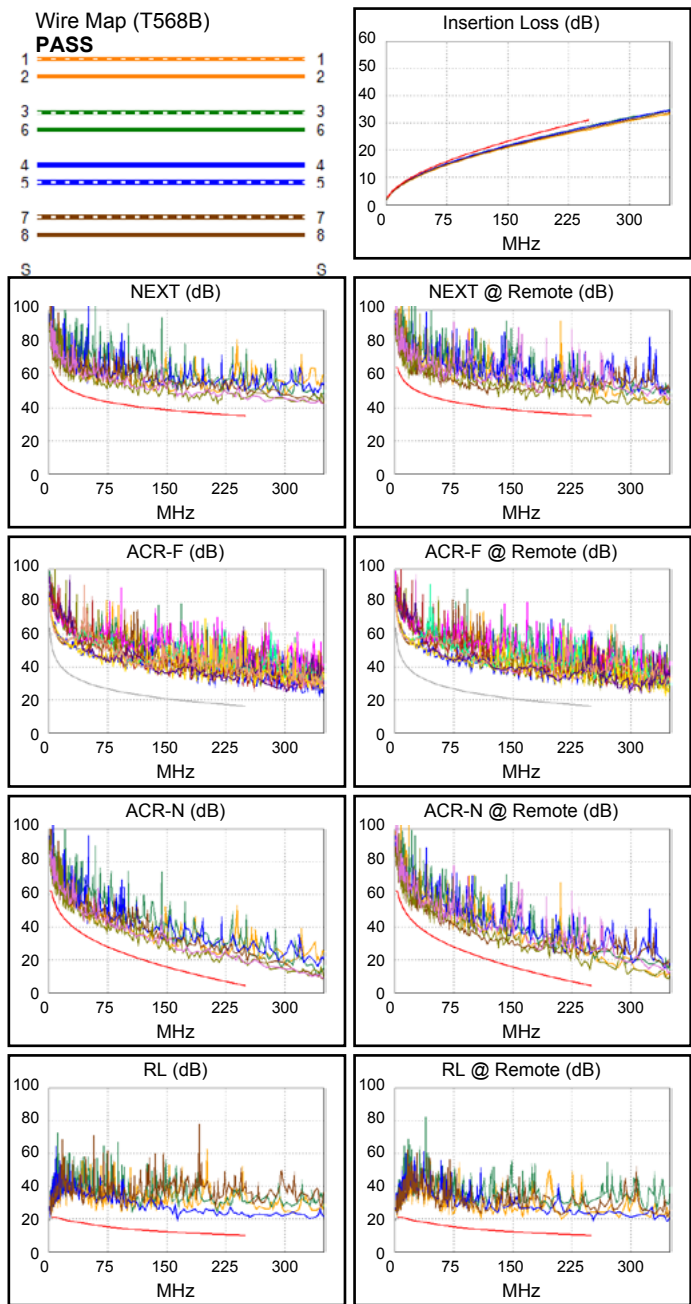
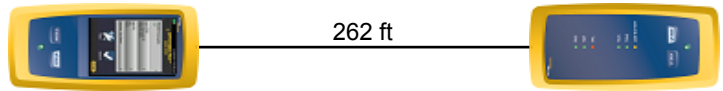
Date / Time: 05/20/2019 08:45:32 AM  
**Headroom 6.1 dB (NEXT 36-78)**  
**Test Limit: TIA Cat 6 Perm. Link**  
 Cable Type: Cat 6 U/UTP  
 NVP: 69.0%

Software Version: V5.1 Build 4  
 Limits Version: V6.1  
 Calibration Start Date:

**Test Summary: PASS**

Model: DSX-5000  
 Main S/N: 2405257  
 Remote S/N: 2420489  
 Main Adapter: DSX-PLA004  
 Remote Adapter: DSX-PLA004

Length (ft), Limit 295	[Pair 12]	262
Prop. Delay (ns), Limit 498	[Pair 45]	431
Delay Skew (ns), Limit 44	[Pair 45]	21
Resistance (ohms)	[Pair 12]	15.67
Insertion Loss Margin (dB)	[Pair 36]	3.9
Frequency (MHz)	[Pair 36]	250.0
Limit (dB)	[Pair 36]	31.1



**Worst Case Margin Worst Case Value**

PASS	MAIN	SR	MAIN	SR
Worst Pair	36-78	36-78	36-78	36-78
<b>NEXT (dB)</b>	6.4	6.1	6.6	6.7
Freq. (MHz)	178.0	17.5	214.5	248.0
Limit (dB)	37.8	54.0	36.4	35.4
Worst Pair	78	36	78	36
<b>PS NEXT (dB)</b>	7.5	7.8	7.8	8.4
Freq. (MHz)	44.3	132.0	214.5	248.0
Limit (dB)	45.1	37.3	33.8	32.8

PASS	MAIN	SR	MAIN	SR
Worst Pair	12-78	78-12	12-78	78-12
<b>ACR-F (dB)</b>	11.7	12.1	12.9	13.2
Freq. (MHz)	211.5	211.5	241.5	241.5
Limit (dB)	17.7	17.7	16.5	16.5
Worst Pair	78	36	78	36
<b>PS ACR-F (dB)</b>	12.9	13.7	12.9	13.7
Freq. (MHz)	211.5	226.0	211.5	226.0
Limit (dB)	14.7	14.1	14.7	14.1

N/A	MAIN	SR	MAIN	SR
Worst Pair	36-78	36-78	36-78	36-78
<b>ACR-N (dB)</b>	7.7	6.6	9.2	9.8
Freq. (MHz)	4.8	17.5	214.5	248.0
Limit (dB)	59.1	46.6	8.0	4.4
Worst Pair	78	78	78	36
<b>PS ACR-N (dB)</b>	8.3	8.4	12.8	10.8
Freq. (MHz)	44.3	17.5	243.5	248.0
Limit (dB)	33.1	44.2	2.3	1.8

PASS	MAIN	SR	MAIN	SR
Worst Pair	12	12	45	12
<b>RL (dB)</b>	5.0	4.4	8.0	8.3
Freq. (MHz)	3.9	3.9	163.5	213.0
Limit (dB)	21.0	21.0	11.9	10.7

Compliant Network Standards:  
 10BASE-T      100BASE-TX      100BASE-T4  
 1000BASE-T    ATM-25            ATM-51  
 ATM-155       100VG-AnyLan   TR-4  
 TR-16 Active    TR-16 Passive

# CLU 6 CU-E



## Cable ID: CLU 6 CU-E

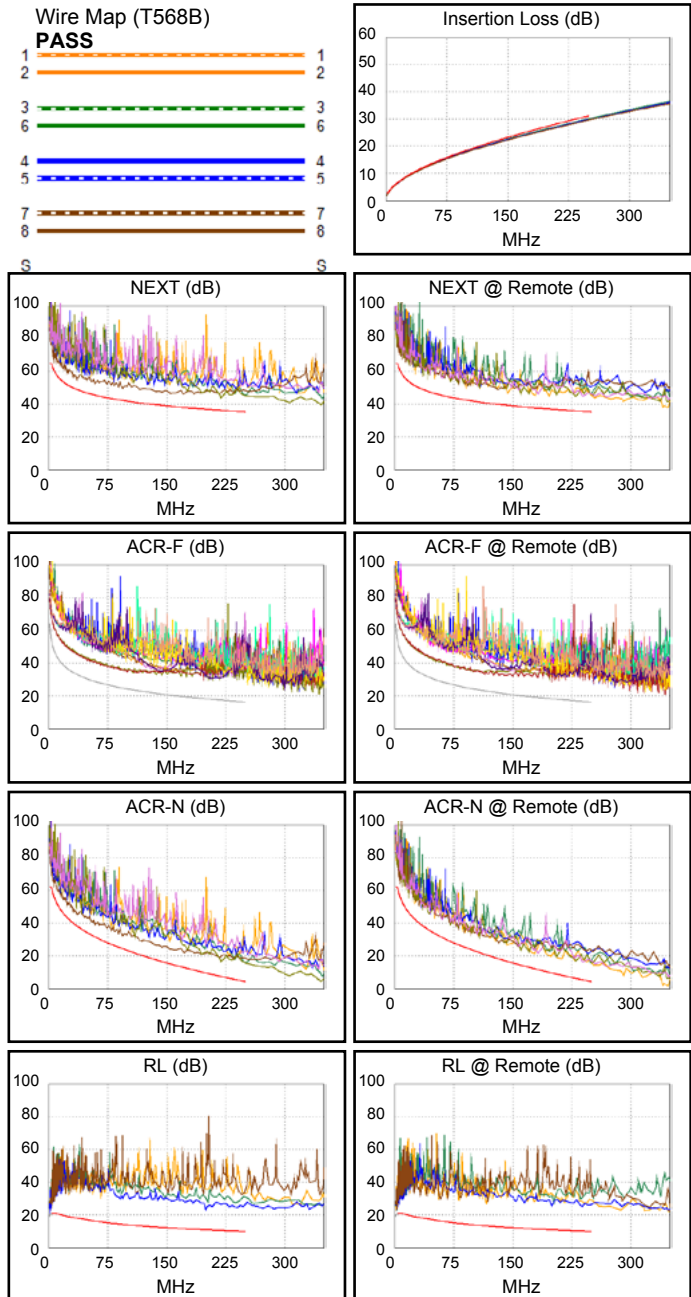
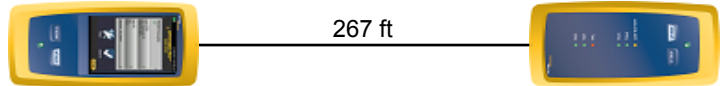
Date / Time: 06/21/2019 09:35:02 AM  
 Headroom 6.1 dB (NEXT 36-45)  
 Test Limit: TIA Cat 6 Perm. Link  
 Cable Type: Cat 6 U/UTP  
 NVP: 69.0%

Software Version: V6.0 Build 6  
 Limits Version: V7.0

## Test Summary: PASS

Model: DSX-5000  
 Main S/N: 2405257  
 Remote S/N: 2420489  
 Main Adapter: DSX-PLA004  
 Remote Adapter: DSX-PLA004

Length (ft), Limit 295	[Pair 78]	267
Prop. Delay (ns), Limit 498	[Pair 45]	459
Delay Skew (ns), Limit 44	[Pair 45]	21
Resistance (ohms)	[Pair 78]	14.49
Insertion Loss Margin (dB)	[Pair 36]	1.0
Frequency (MHz)	[Pair 36]	250.0
Limit (dB)	[Pair 36]	31.1



Worst Case Margin Worst Case Value

PASS	MAIN	SR	MAIN	SR
Worst Pair	36-45	36-78	36-78	12-36
<b>NEXT (dB)</b>	6.1	7.5	7.0	8.7
Freq. (MHz)	35.5	161.0	219.0	250.0
Limit (dB)	49.1	38.5	36.3	35.3
Worst Pair	36	36	36	36
<b>PS NEXT (dB)</b>	8.2	7.7	8.2	8.7
Freq. (MHz)	219.0	178.5	219.0	250.0
Limit (dB)	33.7	35.1	33.7	32.7

PASS	MAIN	SR	MAIN	SR
Worst Pair	36-45	45-36	12-78	78-12
<b>ACR-F (dB)</b>	10.3	10.1	13.7	13.5
Freq. (MHz)	114.5	114.0	250.0	250.0
Limit (dB)	23.0	23.1	16.2	16.2
Worst Pair	36	36	36	36
<b>PS ACR-F (dB)</b>	12.1	11.3	14.0	13.5
Freq. (MHz)	118.0	139.0	214.5	202.0
Limit (dB)	19.8	18.3	14.6	15.1

N/A	MAIN	SR	MAIN	SR
Worst Pair	36-45	12-36	36-78	12-36
<b>ACR-N (dB)</b>	6.4	8.3	10.0	9.7
Freq. (MHz)	35.5	143.5	248.5	250.0
Limit (dB)	38.4	16.6	4.4	4.2
Worst Pair	36	36	36	36
<b>PS ACR-N (dB)</b>	8.5	8.2	10.9	9.7
Freq. (MHz)	23.0	89.8	249.0	250.0
Limit (dB)	41.2	22.6	1.7	1.6

PASS	MAIN	SR	MAIN	SR
Worst Pair	12	45	45	45
<b>RL (dB)</b>	5.5	6.9	12.5	14.9
Freq. (MHz)	3.6	3.4	199.5	247.0
Limit (dB)	21.0	21.0	11.0	10.1

Compliant Network Standards:  
 10BASE-T      100BASE-TX      100BASE-T4  
 1000BASE-T    ATM-25            ATM-51  
 ATM-155      100VG-AnyLan    TR-4  
 TR-16 Active    TR-16 Passive



**Cable ID: CLU 6A**

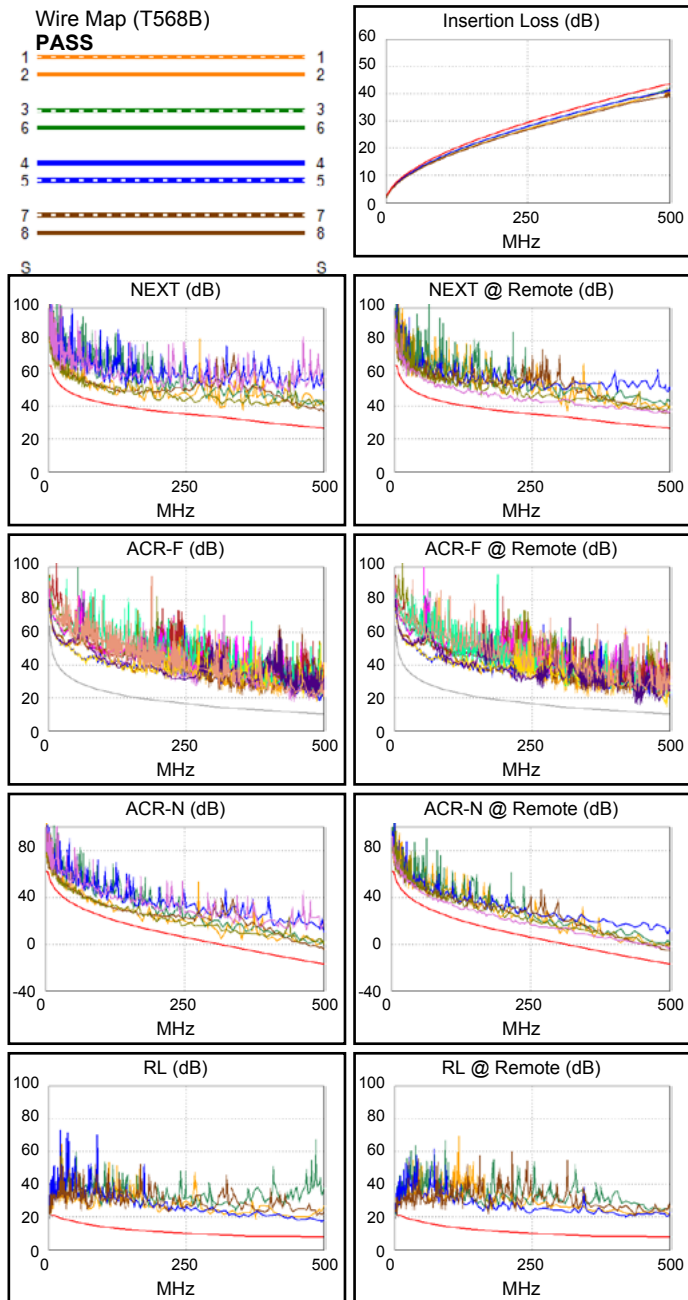
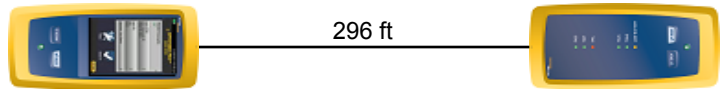
Date / Time: 06/21/2019 10:11:59 AM  
 Headroom 3.2 dB (NEXT 12-36)  
 Test Limit: TIA Cat 6A Perm. Link  
 Cable Type: Cat 6A U/UTP  
 NVP: 69.0%

Software Version: V6.0 Build 6  
 Limits Version: V7.0

**Test Summary: PASS**

Model: DSX-5000  
 Main S/N: 2405257  
 Remote S/N: 2420489  
 Main Adapter: DSX-PLA004  
 Remote Adapter: DSX-PLA004

Length (ft), Limit 295	[Pair 78]	296
Prop. Delay (ns), Limit 498	[Pair 45]	421
Delay Skew (ns), Limit 44	[Pair 45]	15
Resistance (ohms)	[Pair 78]	14.67
Insertion Loss Margin (dB)	[Pair 36]	2.0
Frequency (MHz)	[Pair 36]	499.0
Limit (dB)	[Pair 36]	43.7



Worst Case Margin Worst Case Value

PASS	MAIN	SR	MAIN	SR
Worst Pair	12-36	12-36	12-36	45-78
<b>NEXT (dB)</b>	3.2	4.5	3.2	8.1
Freq. (MHz)	314.0	313.0	314.0	476.0
Limit (dB)	33.3	33.4	33.3	27.4
Worst Pair	36	36	36	36
<b>PS NEXT (dB)</b>	4.5	5.8	9.2	8.6
Freq. (MHz)	314.0	313.0	452.0	492.0
Limit (dB)	30.7	30.8	25.3	24.0

PASS	MAIN	SR	MAIN	SR
Worst Pair	12-78	78-12	12-78	78-12
<b>ACR-F (dB)</b>	8.3	6.5	8.3	6.5
Freq. (MHz)	491.0	491.0	491.0	491.0
Limit (dB)	10.4	10.4	10.4	10.4
Worst Pair	78	12	78	12
<b>PS ACR-F (dB)</b>	10.6	8.9	11.1	8.9
Freq. (MHz)	445.0	491.0	491.0	491.0
Limit (dB)	8.2	7.4	7.4	7.4

N/A	MAIN	SR	MAIN	SR
Worst Pair	12-36	12-36	36-45	36-45
<b>ACR-N (dB)</b>	4.9	6.2	12.6	11.3
Freq. (MHz)	314.0	313.0	498.0	498.0
Limit (dB)	-0.2	-0.1	-16.9	-16.9
Worst Pair	36	36	36	45
<b>PS ACR-N (dB)</b>	6.2	7.5	13.0	11.0
Freq. (MHz)	314.0	313.0	499.0	498.0
Limit (dB)	-2.8	-2.7	-19.9	-19.8

PASS	MAIN	SR	MAIN	SR
Worst Pair	12	78	45	45
<b>RL (dB)</b>	4.6	3.7	9.4	11.6
Freq. (MHz)	4.0	4.0	496.0	420.0
Limit (dB)	21.0	21.0	8.0	8.0

Compliant Network Standards:  
 10BASE-T      100BASE-TX      100BASE-T4  
 1000BASE-T    10GBASE-T      ATM-25  
 ATM-51        ATM-155        100VG-AnyLan  
 TR-4            TR-16 Active    TR-16 Passive

# CLU 6AB



## Cable ID: CLU 6A B

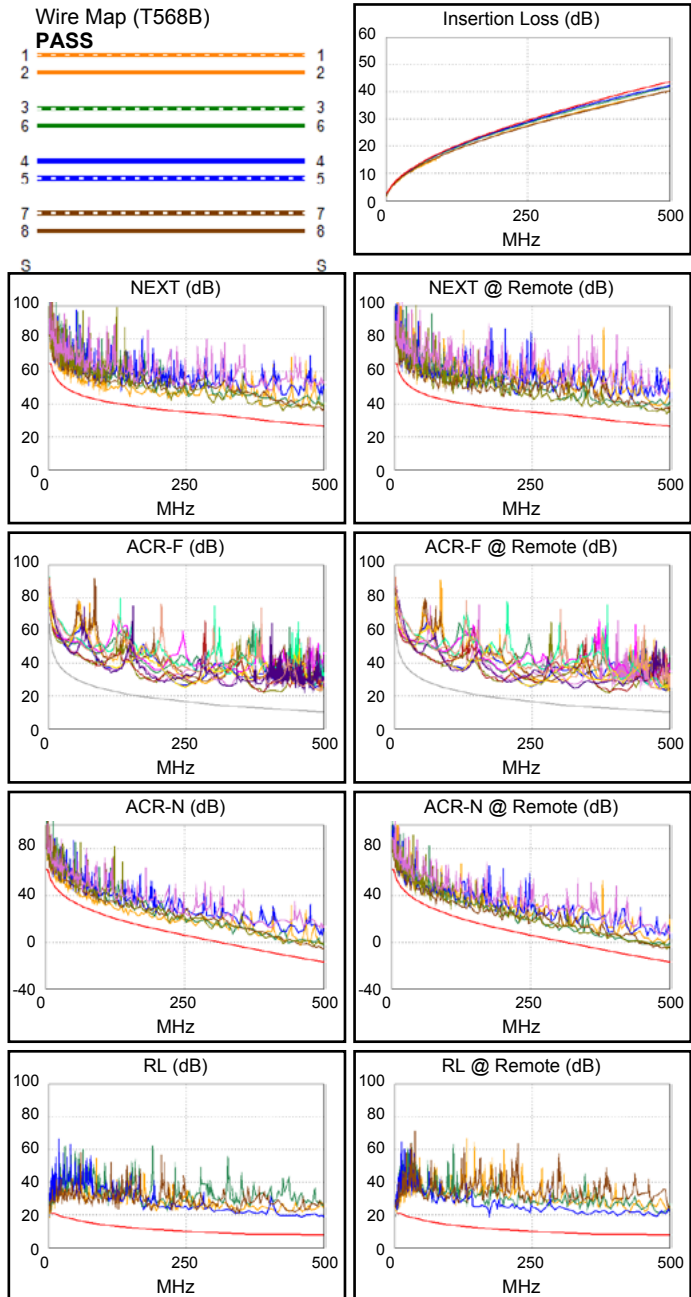
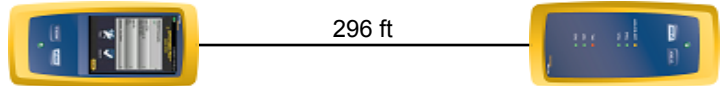
Date / Time: 06/20/2019 08:44:48 AM  
 Headroom 5.1 dB (NEXT 36-45)  
 Test Limit: TIA Cat 6A Perm. Link  
 Cable Type: Cat 6A U/UTP  
 NVP: 69.0%

Software Version: V6.0 Build 6  
 Limits Version: V7.0

## Test Summary: PASS

Model: DSX-5000  
 Main S/N: 2405257  
 Remote S/N: 2420489  
 Main Adapter: DSX-PLA004  
 Remote Adapter: DSX-PLA004

Length (ft), Limit 295	[Pair 78]	296
Prop. Delay (ns), Limit 498	[Pair 45]	449
Delay Skew (ns), Limit 44	[Pair 45]	16
Resistance (ohms)	[Pair 36]	14.33
Insertion Loss Margin (dB)	[Pair 45]	1.2
Frequency (MHz)	[Pair 45]	498.0
Limit (dB)	[Pair 45]	43.6



Worst Case Margin Worst Case Value

PASS	MAIN	SR	MAIN	SR
Worst Pair	12-36	36-45	36-78	36-78
<b>NEXT (dB)</b>	5.9	5.1	6.1	7.5
Freq. (MHz)	147.5	79.3	429.0	494.0
Limit (dB)	39.1	43.5	28.9	26.8
Worst Pair	36	78	36	36
<b>PS NEXT (dB)</b>	5.8	6.4	9.2	8.3
Freq. (MHz)	223.0	69.0	500.0	494.0
Limit (dB)	33.5	41.9	23.8	23.9

PASS	MAIN	SR	MAIN	SR
Worst Pair	78-12	12-78	36-45	36-45
<b>ACR-F (dB)</b>	9.2	9.5	9.8	9.6
Freq. (MHz)	248.0	247.5	390.0	393.0
Limit (dB)	16.3	16.3	12.4	12.3
Worst Pair	36	36	36	78
<b>PS ACR-F (dB)</b>	10.6	10.9	10.6	13.0
Freq. (MHz)	386.0	196.5	386.0	488.0
Limit (dB)	9.5	15.3	9.5	7.4

N/A	MAIN	SR	MAIN	SR
Worst Pair	12-36	36-45	36-45	36-45
<b>ACR-N (dB)</b>	6.4	5.2	11.3	9.8
Freq. (MHz)	147.5	79.3	499.0	487.0
Limit (dB)	17.0	27.6	-17.0	-16.1
Worst Pair	36	36	36	36
<b>PS ACR-N (dB)</b>	6.5	6.8	11.1	10.4
Freq. (MHz)	223.0	69.0	500.0	497.0
Limit (dB)	5.8	27.2	-20.0	-19.7

PASS	MAIN	SR	MAIN	SR
Worst Pair	12	12	45	45
<b>RL (dB)</b>	4.4	5.1	10.7	11.2
Freq. (MHz)	3.8	3.8	460.0	476.0
Limit (dB)	21.0	21.0	8.0	8.0

Compliant Network Standards:  
 10BASE-T      100BASE-TX      100BASE-T4  
 1000BASE-T    10GBASE-T      ATM-25  
 ATM-51        ATM-155        100VG-AnyLan  
 TR-4           TR-16 Active    TR-16 Passive



**EKSELANS BY ITS**

**EKSELANS by ITS**

**ITS Partner O.B.S. S.L**

Av. Cerdanyola

08172 Sant Cugat del Vallès

Barcelona (España)

Tel: +34 93 583 95 43

[info@ek.plus](mailto:info@ek.plus)

[www.ek.plus](http://www.ek.plus)